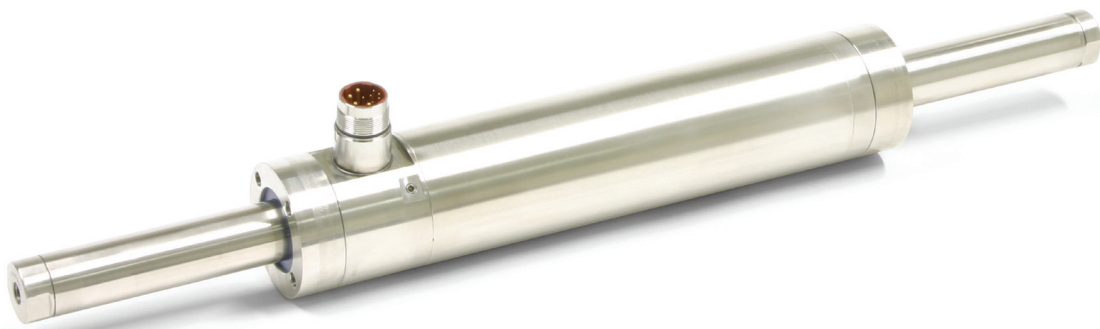


LINEAR MOTORS P01-48X150G-HP-SSC



- ✓ Stainless steel housing EN 1.4404 / AISI / SAE 316L
- ✓ Hygienic design
- ✓ Welded connections, no gaskets
- ✓ Completely encapsulated (IP69K)
- ✓ Protection class IP69K
- ✓ Optional integrated water cooling
- ✓ For use in the food or in the pharmaceutical sector

LINEAR MOTORS P01-48X150G-HP-SSC

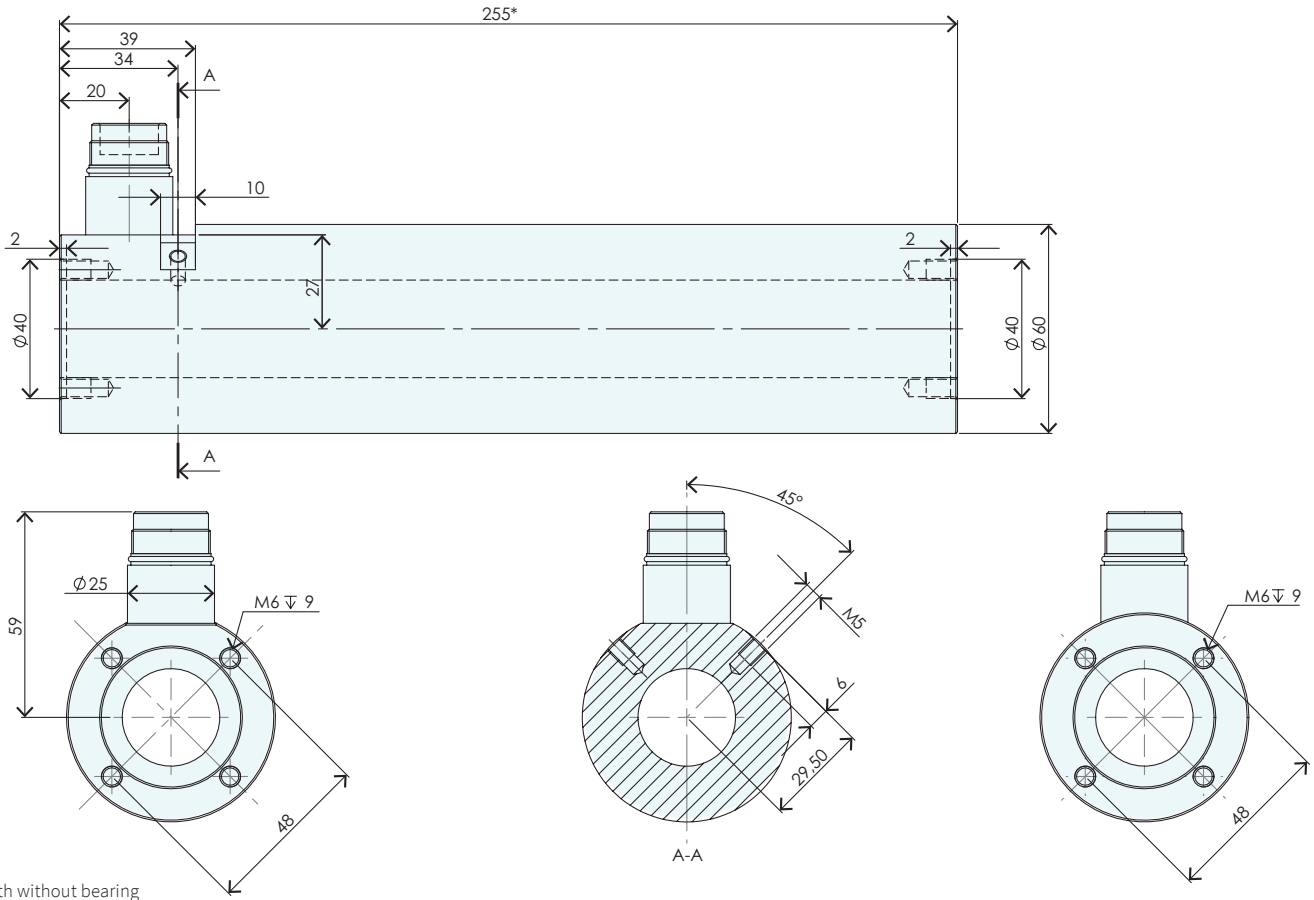
/ TECHNICAL DATA /	662
/ MOTOR SPECIFICATIONS /	665
P01-48x150G/20-HP-PB25-SSC.....	665
P01-48x150G/80-HP-PB25-SSC.....	666
P01-48x150G/170-HP-PB25-SSC.....	667
P01-48x150G/290-HP-PB25-SSC.....	668
P01-48x150G/380-HP-PB25-SSC.....	669
P01-48x150G/470-HP-PB25-SSC.....	670
P01-48x150G/590-HP-PB25-SSC.....	671
P01-48x150G/680-HP-PB25-SSC.....	672
P01-48x150G/890-HP-PB25-SSC.....	673
P01-48x150G/1070-HP-PB25-SSC	674
/ ACCESSORIES /	675



MOTOR FAMILY P01-48x150G-HP-SSC

Technical Data				
Stroke				
Max. Stroke	mm	(in)	1070	(42.1)
Force				
Max. Force @ 48VDC	N	(lbf)	312	(70)
Max. Force @ 72VDC	N	(lbf)	312	(70)
Max. Cont. Force [Passive cooling / Fan / Fluid]	N	(lbf)	69 / - / 161	(16 / - / 36)
Max. Border Force relative	%		≤ 100	
Force Constant	N/A _{pk}	(lbf/A _{pk})	13.6	(3.06)
Velocity				
Max. Velocity @ 48VDC	m/s	(in/s)	3.2	(126)
Max. Velocity @ 72VDC	m/s	(in/s)	4.8	(189)
Position Detection				
Position Resolution	mm	(in)	0.007	(0.0003)
Repeatability	mm	(in)	±0.05	(±0.002)
Position Resolution with ES	mm	(in)	0.001	(0.00004)
Repeatability with ES	mm	(in)	±0.01	(±0.0004)
Linearity with ES	mm	(in)	±0.01	(±0.0004)
Electrical Data				
Max. Current @ 48VDC	A _{pk}		23	
Max. Current @ 72VDC	A _{pk}		23	
Max. Cont. Current [Passive cooling / Fan / Fluid]	A _{pk}		5.1 / - / 11.8	
Terminal Resistance 25 °C / 120 °C	Ohm		0.81 / 1.2	
Terminal Inductivity	mH		0.7	
Magnetic Period	mm	(in)	60	(2.35)
Thermal Data				
Max. Winding Temperature (Sensor)	°C		120	
Thermal Resistance [Passive cooling / Fan / Fluid]	°K/W		2.7 / - / 0.5	
Thermal Time Constant [Passive cooling / Fan / Fluid]	s		2100 / - / 260	
Mechanical Data				
Stator Diameter	mm	(in)	60	(2.4)
Stator Length [Connector type / Cable type]	mm	(in)	305	(12)
Stator Mass	g	(lb)	3300	(7.28)
Slider Diameter	mm	(in)	27	(1.1)
Slider Length	mm	(in)	350 - 1400	(14 - 55)
Slider Mass	g	(lb)	1360 - 5910	(3 - 13)
IP Code			IP 69k	

STATOR



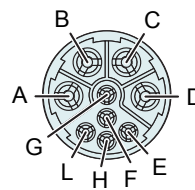
* Length without bearing

Item	Description	Item-No.
PS01-48x150G-HP-SSC-C	Stator Stainless Steel IP69K	0150-4589
PS01-48x150G-HP-SSC-C-FC	Stator stainless steel IP69K, FC	0150-4590

CONNECTOR

Motor Connector Wiring	PS01-48x150G-HP-SSC-C PS01-48x150G-HP-SSC-C-FC	Wire Color Motor Cable
	C-Connector	
Ph 1+	A	red
Ph 1-	B	pink
Ph 2+	C	blue
Ph 2-	D	grey
+5VDC	E	white
GND	F	inner Shield
Sinus	G	yellow
Cosinus	H	green
Temp.	L	black
Shield	Case	outer Shield

C-Connector

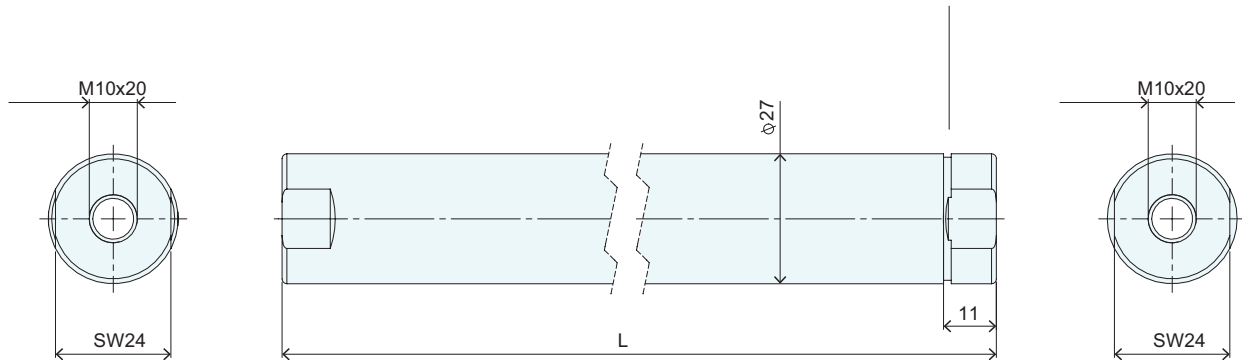


View: Motor connector, plug side

SLIDER

Slider High Clearance

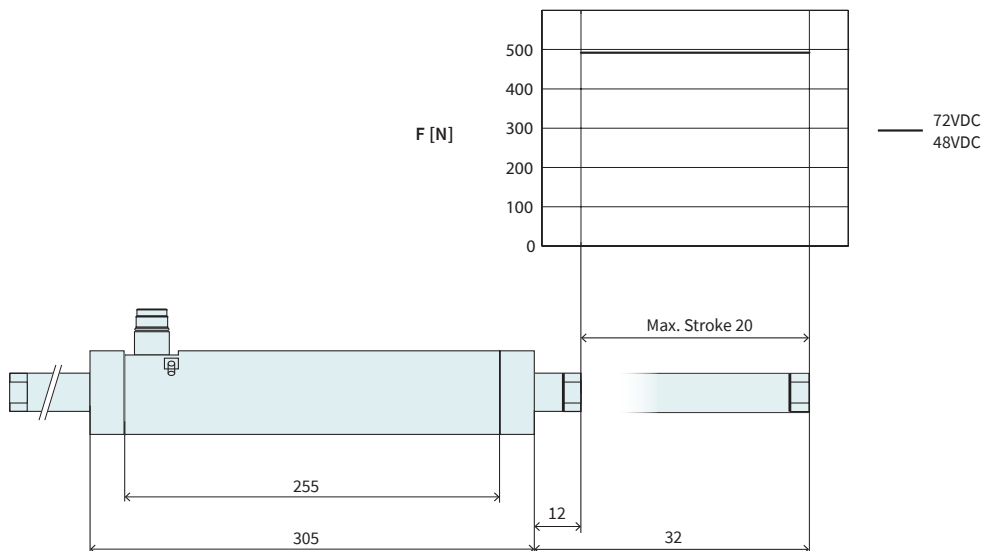
Number of grooves determines the slider type (see chapter 2 / slider) and marks the front end.



Slider High Clearance			
Item	Description	Max. Stroke [mm]	Item-No.
PL01-27x350/270	Slider 'High Clearance'	20	0150-1467
PL01-27x410/330	Slider 'High Clearance'	80	0150-1468
PL01-27x500/420	Slider 'High Clearance'	170	0150-1469
PL01-27x620/540	Slider 'High Clearance'	290	0150-1470
PL01-27x710/630	Slider 'High Clearance'	380	0150-1471
PL01-27x800/720	Slider 'High Clearance'	470	0150-1472
PL01-27x920/840	Slider 'High Clearance'	590	0150-1447
PL01-27x1010/930	Slider 'High Clearance'	680	0150-1473
PL01-27x1220/1140	Slider 'High Clearance'	890	0150-1587
PL01-27x1400/1320	Slider 'High Clearance'	1070	0150-1588

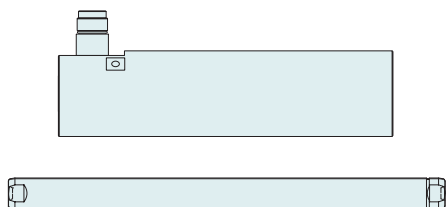
P01-48x150G/20-HP-PB25-SSC

Max. Stroke: 20 mm
Peak Force: 496 N



Dimensions in mm

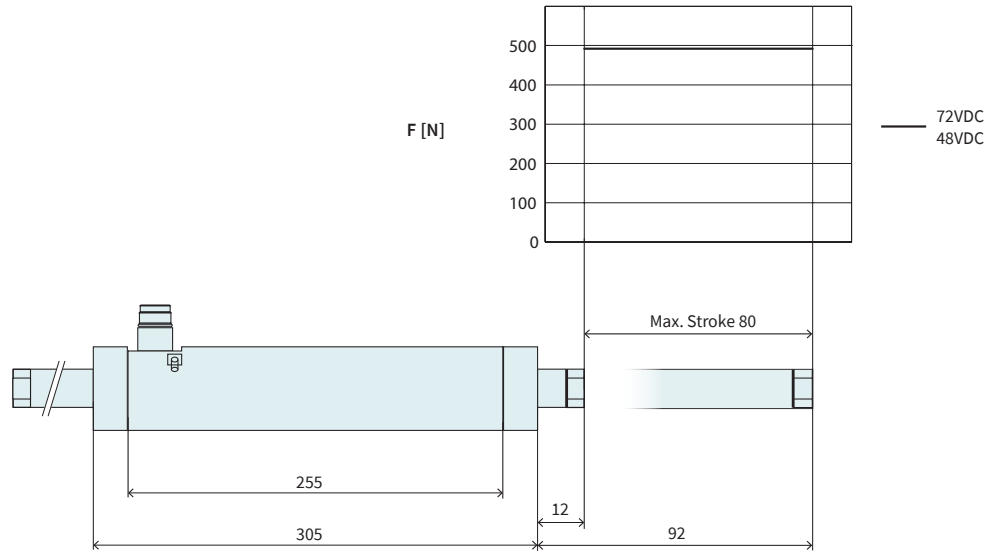
Technical Data P01-48x150G/20-HP-PB25-SSC			
Stroke			
Max. Stroke	mm (in)	20	(0.79)
Force			
Max. Force @ 48VDC	N (lbf)	312	(70)
Max. Force @ 72VDC	N (lbf)	312	(70)
Max. Cont. Force [Passive cooling / Fan / Fluid]	N (lbf)	69 / - / 161	(16 / - / 36)
Max. Border Force relative	%	≤ 100	
Force Constant	N/A _{pk} (lbf/A _{pk})	13.6	(3.06)
Velocity			
Max. Velocity @ 48VDC	m/s (in/s)	3.2	(126)
Max. Velocity @ 72VDC	m/s (in/s)	4.8	(189)
Position Detection			
Repeatability	mm (in)	±0.05	(±0.002)
Linearity	%	± 1.05	
Electrical Data			
Max. Current @ 48VDC	A _{pk}	23	
Max. Current @ 72VDC	A _{pk}	23	
Max. Cont. Current [Passive cooling / Fan / Fluid]	A _{pk}	5.1 / - / 11.8	
Thermal Data			
Max. Winding Temperature (Sensor)	°C	120	
Thermal Resistance [Passive cooling / Fan / Fluid]	°K/W	2.7 / - / 0.5	
Thermal Time Constant [Passive cooling / Fan / Fluid]	s	2100 / - / 260	
Mechanical Data			
Slider Length	mm (in)	350	(13.8)
Slider Mass	g (lb)	1360	(2.99)



Item	Description	Item-No.
PS01-48x150G-HP-SSC-C	Stator Stainless Steel IP69K	0150-4589
PS01-48x150G-HP-SSC-C-FC	Stator stainless steel IP69K, FC	0150-4590
PL01-27x350/270	Slider 'High Clearance'	0150-1467

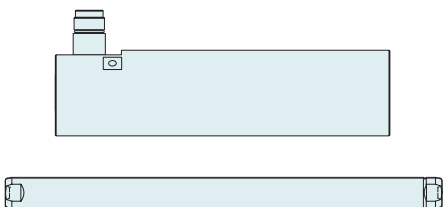
P01-48x150G/80-HP-PB25-SSC

Max. Stroke: 80 mm
Peak Force: 496 N



Dimensions in mm

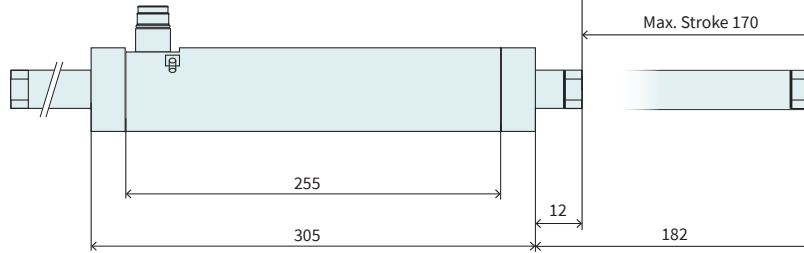
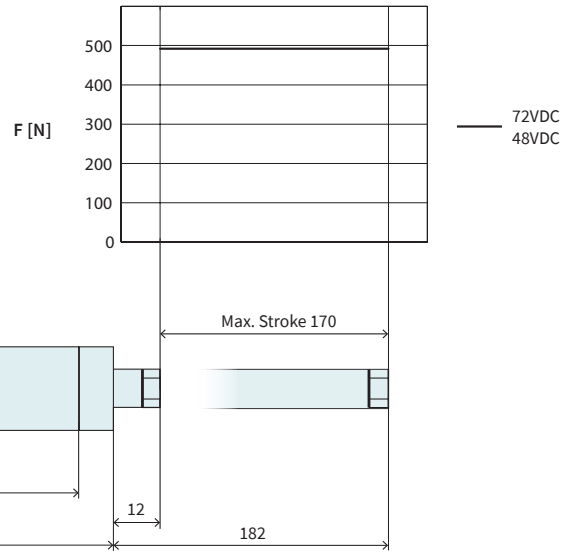
Technical Data P01-48x150G/80-HP-PB25-SSC				
Stroke				
Max. Stroke	mm	(in)	80	(3.15)
Force				
Max. Force @ 48VDC	N	(lbf)	312	(70)
Max. Force @ 72VDC	N	(lbf)	312	(70)
Max. Cont. Force [Passive cooling / Fan / Fluid]	N	(lbf)	69 / - / 161	(16 / - / 36)
Max. Border Force relative	%		≤ 100	
Force Constant	N/A _{pk}	(lbf/A _{pk})	13.6	(3.06)
Velocity				
Max. Velocity @ 48VDC	m/s	(in/s)	3.2	(126)
Max. Velocity @ 72VDC	m/s	(in/s)	4.8	(189)
Position Detection				
Repeatability	mm	(in)	±0.05	(±0.002)
Linearity	%		± 1.05	
Electrical Data				
Max. Current @ 48VDC	A _{pk}		23	
Max. Current @ 72VDC	A _{pk}		23	
Max. Cont. Current [Passive cooling / Fan / Fluid]	A _{pk}		5.1 / - / 11.8	
Thermal Data				
Max. Winding Temperature (Sensor)	°C		120	
Thermal Resistance [Passive cooling / Fan / Fluid]	°K/W		2.7 / - / 0.5	
Thermal Time Constant [Passive cooling / Fan / Fluid]	s		2100 / - / 260	
Mechanical Data				
Slider Length	mm	(in)	410	(16.1)
Slider Mass	g	(lb)	1620	(3.57)



Item	Description	Item-No.
PS01-48x150G-HP-SSC-C	Stator Stainless Steel IP69K	0150-4589
PS01-48x150G-HP-SSC-C-FC	Stator stainless steel IP69K, FC	0150-4590
PL01-27x410/330	Slider 'High Clearance'	0150-1468

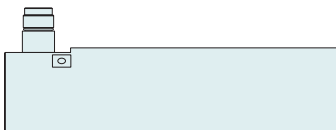
P01-48x150G/170-HP-PB25-SSC

Max. Stroke: 170 mm
Peak Force: 496 N



Dimensions in mm

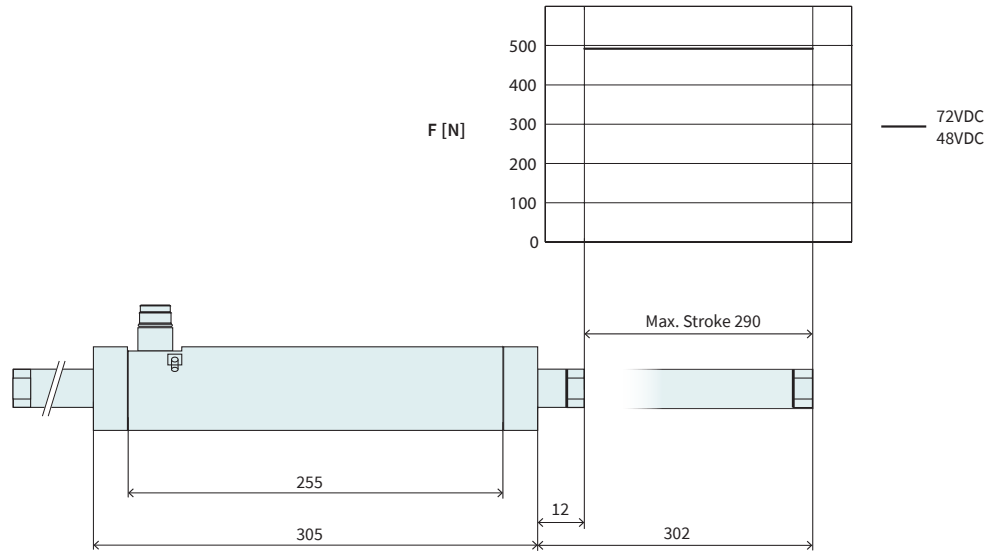
Technical Data P01-48x150G/170-HP-PB25-SSC			
Stroke			
Max. Stroke	mm (in)	170	(6.69)
Force			
Max. Force @ 48VDC	N (lbf)	312	(70)
Max. Force @ 72VDC	N (lbf)	312	(70)
Max. Cont. Force [Passive cooling / Fan / Fluid]	N (lbf)	69 / - / 161	(16 / - / 36)
Max. Border Force relative	%	≤ 100	
Force Constant	N/A _{pk} (lbf/A _{pk})	13.6	(3.06)
Velocity			
Max. Velocity @ 48VDC	m/s (in/s)	3.2	(126)
Max. Velocity @ 72VDC	m/s (in/s)	4.8	(189)
Position Detection			
Repeatability	mm (in)	±0.05	(±0.002)
Linearity	%	± 1.05	
Electrical Data			
Max. Current @ 48VDC	A _{pk}	23	
Max. Current @ 72VDC	A _{pk}	23	
Max. Cont. Current [Passive cooling / Fan / Fluid]	A _{pk}	5.1 / - / 11.8	
Thermal Data			
Max. Winding Temperature (Sensor)	°C	120	
Thermal Resistance [Passive cooling / Fan / Fluid]	°K/W	2.7 / - / 0.5	
Thermal Time Constant [Passive cooling / Fan / Fluid]	s	2100 / - / 260	
Mechanical Data			
Slider Length	mm (in)	500	(19.7)
Slider Mass	g (lb)	2010	(4.43)



Item	Description	Item-No.
PS01-48x150G-HP-SSC-C	Stator Stainless Steel IP69K	0150-4589
PS01-48x150G-HP-SSC-C-FC	Stator stainless steel IP69K, FC	0150-4590
PL01-27x500/420	Slider 'High Clearance'	0150-1469

P01-48x150G/290-HP-PB25-SSC

Max. Stroke: 290 mm
Peak Force: 496 N



Dimensions in mm

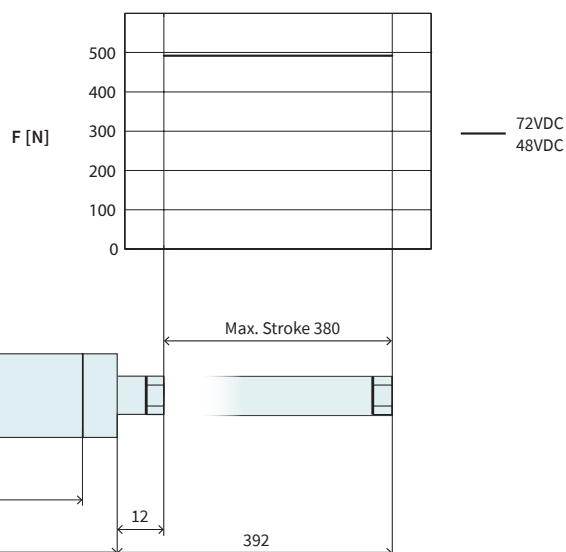
Technical Data P01-48x150G/290-HP-PB25-SSC				
Stroke				
Max. Stroke	mm	(in)	290	(11.42)
Force				
Max. Force @ 48VDC	N	(lbf)	312	(70)
Max. Force @ 72VDC	N	(lbf)	312	(70)
Max. Cont. Force [Passive cooling / Fan / Fluid]	N	(lbf)	69 / - / 161	(16 / - / 36)
Max. Border Force relative			≤ 100	
Force Constant	N/A _{pk}	(lbf/A _{pk})	13.6	(3.06)
Velocity				
Max. Velocity @ 48VDC	m/s	(in/s)	3.2	(126)
Max. Velocity @ 72VDC	m/s	(in/s)	4.8	(189)
Position Detection				
Repeatability	mm	(in)	±0.05	(±0.002)
Linearity			± 1.05	
Electrical Data				
Max. Current @ 48VDC	A _{pk}		23	
Max. Current @ 72VDC	A _{pk}		23	
Max. Cont. Current [Passive cooling / Fan / Fluid]	A _{pk}		5.1 / - / 11.8	
Thermal Data				
Max. Winding Temperature (Sensor)	°C		120	
Thermal Resistance [Passive cooling / Fan / Fluid]	°K/W		2.7 / - / 0.5	
Thermal Time Constant [Passive cooling / Fan / Fluid]	s		2100 / - / 260	
Mechanical Data				
Slider Length	mm	(in)	620	(24.4)
Slider Mass	g	(lb)	2530	(5.58)



Item	Description	Item-No.
PS01-48x150G-HP-SSC-C	Stator Stainless Steel IP69K	0150-4589
PS01-48x150G-HP-SSC-C-FC	Stator stainless steel IP69K, FC	0150-4590
PL01-27x620/540	Slider 'High Clearance'	0150-1470

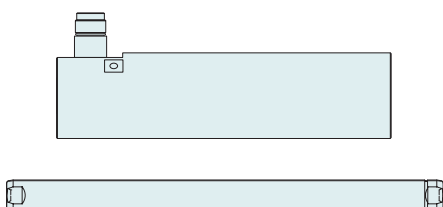
P01-48x150G/380-HP-PB25-SSC

Max. Stroke: 380 mm
Peak Force: 496 N



Dimensions in mm

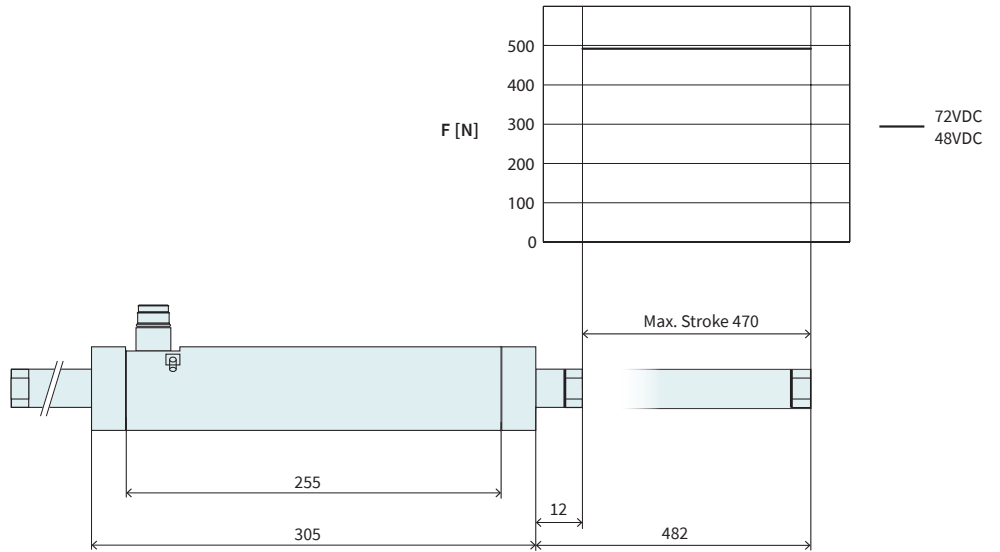
Technical Data P01-48x150G/380-HP-PB25-SSC			
Stroke			
Max. Stroke	mm (in)	380	(14.96)
Force			
Max. Force @ 48VDC	N (lbf)	312	(70)
Max. Force @ 72VDC	N (lbf)	312	(70)
Max. Cont. Force [Passive cooling / Fan / Fluid]	N (lbf)	69 / - / 161	(16 / - / 36)
Max. Border Force relative	%	≤ 100	
Force Constant	N/A _{pk} (lbf/A _{pk})	13.6	(3.06)
Velocity			
Max. Velocity @ 48VDC	m/s (in/s)	3.2	(126)
Max. Velocity @ 72VDC	m/s (in/s)	4.8	(189)
Position Detection			
Repeatability	mm (in)	±0.05	(±0.002)
Linearity	%	± 1.05	
Electrical Data			
Max. Current @ 48VDC	A _{pk}	23	
Max. Current @ 72VDC	A _{pk}	23	
Max. Cont. Current [Passive cooling / Fan / Fluid]	A _{pk}	5.1 / - / 11.8	
Thermal Data			
Max. Winding Temperature (Sensor)	°C	120	
Thermal Resistance [Passive cooling / Fan / Fluid]	°K/W	2.7 / - / 0.5	
Thermal Time Constant [Passive cooling / Fan / Fluid]	s	2100 / - / 260	
Mechanical Data			
Slider Length	mm (in)	710	(27.9)
Slider Mass	g (lb)	2920	(6.44)



Item	Description	Item-No.
PS01-48x150G-HP-SSC-C	Stator Stainless Steel IP69K	0150-4589
PS01-48x150G-HP-SSC-C-FC	Stator stainless steel IP69K, FC	0150-4590
PL01-27x710/630	Slider 'High Clearance'	0150-1471

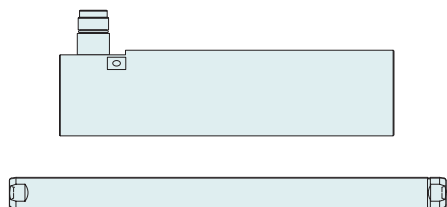
P01-48x150G/470-HP-PB25-SSC

Max. Stroke: 470 mm
Peak Force: 496 N



Dimensions in mm

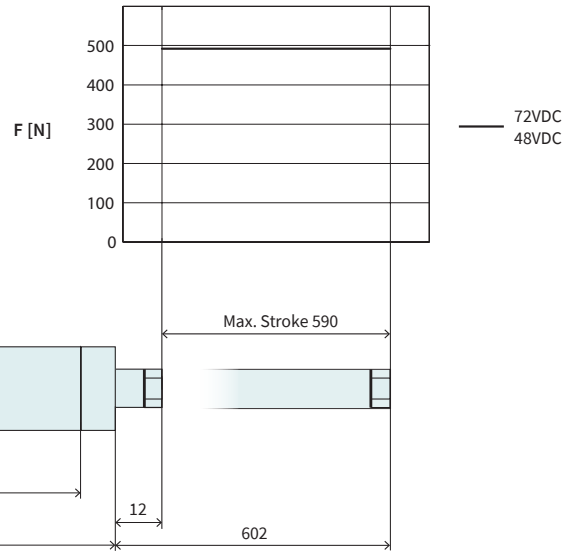
Technical Data P01-48x150G/470-HP-PB25-SSC				
Stroke				
Max. Stroke	mm	(in)	470	(18.51)
Force				
Max. Force @ 48VDC	N	(lbf)	312	(70)
Max. Force @ 72VDC	N	(lbf)	312	(70)
Max. Cont. Force [Passive cooling / Fan / Fluid]	N	(lbf)	69 / - / 161	(16 / - / 36)
Max. Border Force relative	%		≤ 100	
Force Constant	N/A _{pk}	(lbf/A _{pk})	13.6	(3.06)
Velocity				
Max. Velocity @ 48VDC	m/s	(in/s)	3.2	(126)
Max. Velocity @ 72VDC	m/s	(in/s)	4.8	(189)
Position Detection				
Repeatability	mm	(in)	±0.05	(±0.002)
Linearity	%		± 1.05	
Electrical Data				
Max. Current @ 48VDC	A _{pk}		23	
Max. Current @ 72VDC	A _{pk}		23	
Max. Cont. Current [Passive cooling / Fan / Fluid]	A _{pk}		5.1 / - / 11.8	
Thermal Data				
Max. Winding Temperature (Sensor)	°C		120	
Thermal Resistance [Passive cooling / Fan / Fluid]	°K/W		2.7 / - / 0.5	
Thermal Time Constant [Passive cooling / Fan / Fluid]	s		2100 / - / 260	
Mechanical Data				
Slider Length	mm	(in)	800	(31.5)
Slider Mass	g	(lb)	3310	(7.30)



Item	Description	Item-No.
PS01-48x150G-HP-SSC-C	Stator Stainless Steel IP69K	0150-4589
PS01-48x150G-HP-SSC-C-FC	Stator stainless steel IP69K, FC	0150-4590
PL01-27x800/720	Slider 'High Clearance'	0150-1472

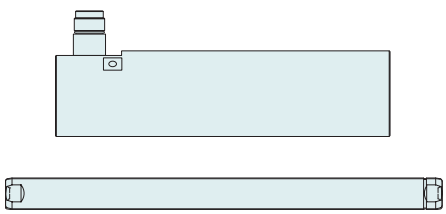
P01-48x150G/590-HP-PB25-SSC

Max. Stroke: 590 mm
Peak Force: 496 N



Dimensions in mm

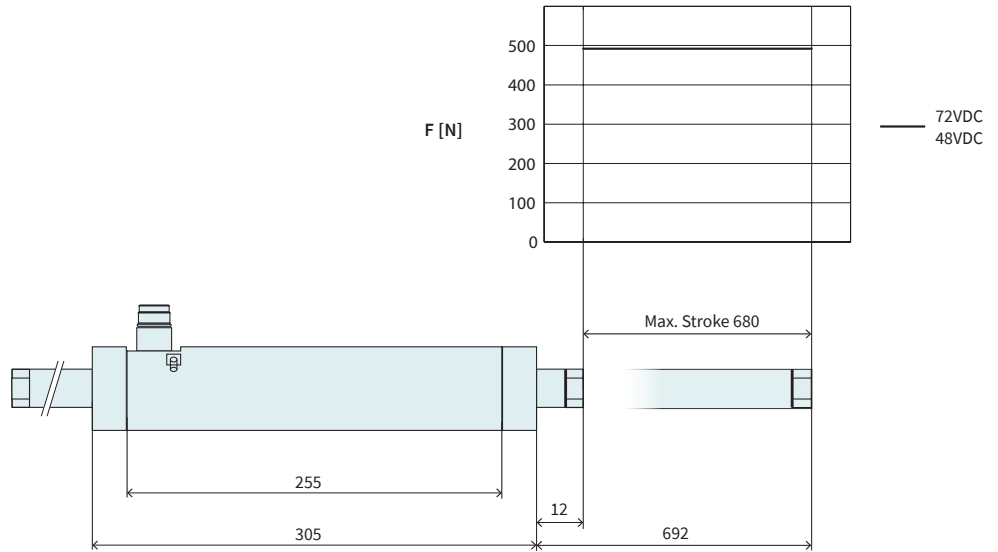
Technical Data P01-48x150G/590-HP-PB25-SSC			
Stroke			
Max. Stroke	mm (in)	590	(23.23)
Force			
Max. Force @ 48VDC	N (lbf)	312	(70)
Max. Force @ 72VDC	N (lbf)	312	(70)
Max. Cont. Force [Passive cooling / Fan / Fluid]	N (lbf)	69 / - / 161	(16 / - / 36)
Max. Border Force relative	%	≤ 100	
Force Constant	N/A _{pk} (lbf/A _{pk})	13.6	(3.06)
Velocity			
Max. Velocity @ 48VDC	m/s (in/s)	3.2	(126)
Max. Velocity @ 72VDC	m/s (in/s)	4.8	(189)
Position Detection			
Repeatability	mm (in)	±0.05	(±0.002)
Linearity	%	± 1.05	
Electrical Data			
Max. Current @ 48VDC	A _{pk}	23	
Max. Current @ 72VDC	A _{pk}	23	
Max. Cont. Current [Passive cooling / Fan / Fluid]	A _{pk}	5.1 / - / 11.8	
Thermal Data			
Max. Winding Temperature (Sensor)	°C	120	
Thermal Resistance [Passive cooling / Fan / Fluid]	°K/W	2.7 / - / 0.5	
Thermal Time Constant [Passive cooling / Fan / Fluid]	s	2100 / - / 260	
Mechanical Data			
Slider Length	mm (in)	920	(36.2)
Slider Mass	g (lb)	3830	(8.44)



Item	Description	Item-No.
PS01-48x150G-HP-SSC-C	Stator Stainless Steel IP69K	0150-4589
PS01-48x150G-HP-SSC-C-FC	Stator stainless steel IP69K, FC	0150-4590
PL01-27x920/840	Slider 'High Clearance'	0150-1447

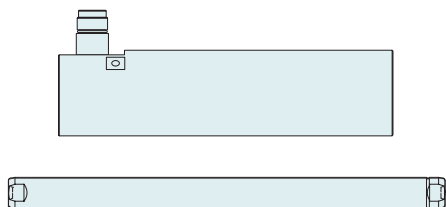
P01-48x150G/680-HP-PB25-SSC

Max. Stroke: 680 mm
Peak Force: 496 N



Dimensions in mm

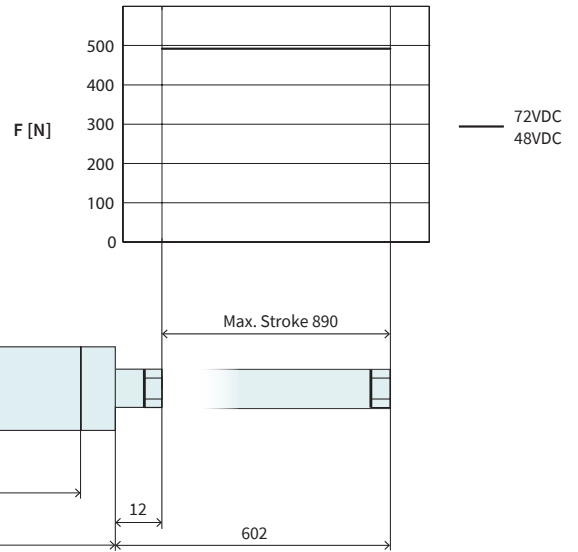
Technical Data P01-48x150G/680-HP-PB25-SSC				
Stroke				
Max. Stroke	mm	(in)	680	(26.77)
Force				
Max. Force @ 48VDC	N	(lbf)	312	(70)
Max. Force @ 72VDC	N	(lbf)	312	(70)
Max. Cont. Force [Passive cooling / Fan / Fluid]	N	(lbf)	69 / - / 161	(16 / - / 36)
Max. Border Force relative	%		≤ 100	
Force Constant	N/A _{pk}	(lbf/A _{pk})	13.6	(3.06)
Velocity				
Max. Velocity @ 48VDC	m/s	(in/s)	3.2	(126)
Max. Velocity @ 72VDC	m/s	(in/s)	4.8	(189)
Position Detection				
Repeatability	mm	(in)	±0.05	(±0.002)
Linearity	%		± 1.05	
Electrical Data				
Max. Current @ 48VDC	A _{pk}		23	
Max. Current @ 72VDC	A _{pk}		23	
Max. Cont. Current [Passive cooling / Fan / Fluid]	A _{pk}		5.1 / - / 11.8	
Thermal Data				
Max. Winding Temperature (Sensor)	°C		120	
Thermal Resistance [Passive cooling / Fan / Fluid]	°K/W		2.7 / - / 0.5	
Thermal Time Constant [Passive cooling / Fan / Fluid]	s		2100 / - / 260	
Mechanical Data				
Slider Length	mm	(in)	1010	(39.8)
Slider Mass	g	(lb)	4220	(9.30)



Item	Description	Item-No.
PS01-48x150G-HP-SSC-C	Stator Stainless Steel IP69K	0150-4589
PS01-48x150G-HP-SSC-C-FC	Stator stainless steel IP69K, FC	0150-4590
PL01-27x1010/930	Slider 'High Clearance'	0150-1473

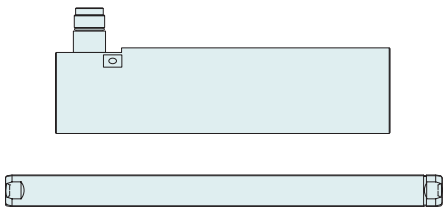
P01-48x150G/890-HP-PB25-SSC

Max. Stroke: 890 mm
Peak Force: 496 N



Dimensions in mm

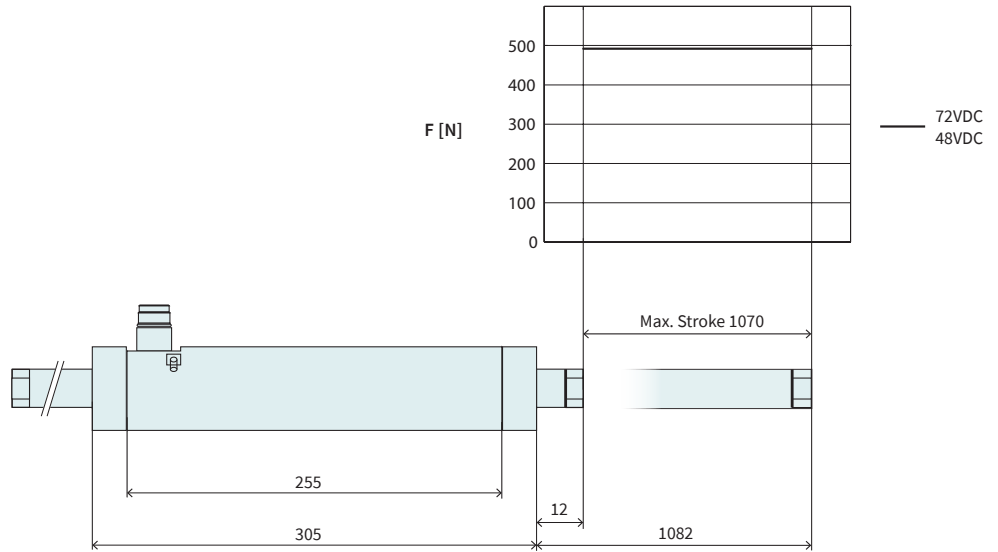
Technical Data P01-48x150G/890-HP-PB25-SSC			
Stroke			
Max. Stroke	mm (in)	890	(35.04)
Force			
Max. Force @ 48VDC	N (lbf)	312	(70)
Max. Force @ 72VDC	N (lbf)	312	(70)
Max. Cont. Force [Passive cooling / Fan / Fluid]	N (lbf)	69 / - / 161	(16 / - / 36)
Max. Border Force relative	%	≤ 100	
Force Constant	N/A _{pk} (lbf/A _{pk})	13.6	(3.06)
Velocity			
Max. Velocity @ 48VDC	m/s (in/s)	3.2	(126)
Max. Velocity @ 72VDC	m/s (in/s)	4.8	(189)
Position Detection			
Repeatability	mm (in)	±0.05	(±0.002)
Linearity	%	± 1.05	
Electrical Data			
Max. Current @ 48VDC	A _{pk}	23	
Max. Current @ 72VDC	A _{pk}	23	
Max. Cont. Current [Passive cooling / Fan / Fluid]	A _{pk}	5.1 / - / 11.8	
Thermal Data			
Max. Winding Temperature (Sensor)	°C	120	
Thermal Resistance [Passive cooling / Fan / Fluid]	°K/W	2.7 / - / 0.5	
Thermal Time Constant [Passive cooling / Fan / Fluid]	s	2100 / - / 260	
Mechanical Data			
Slider Length	mm (in)	1220	(48)
Slider Mass	g (lb)	5130	(11.29)



Item	Description	Item-No.
PS01-48x150G-HP-SSC-C	Stator Stainless Steel IP69K	0150-4589
PS01-48x150G-HP-SSC-C-FC	Stator stainless steel IP69K, FC	0150-4590
PL01-27x1220/1140	Slider 'High Clearance'	0150-1587

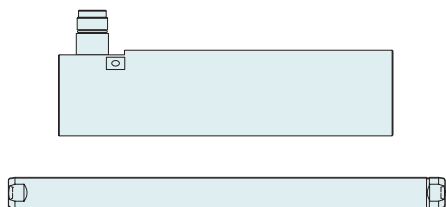
P01-48x150G/1070-HP-PB25-SSC

Max. Stroke: 1070 mm
Peak Force: 496 N



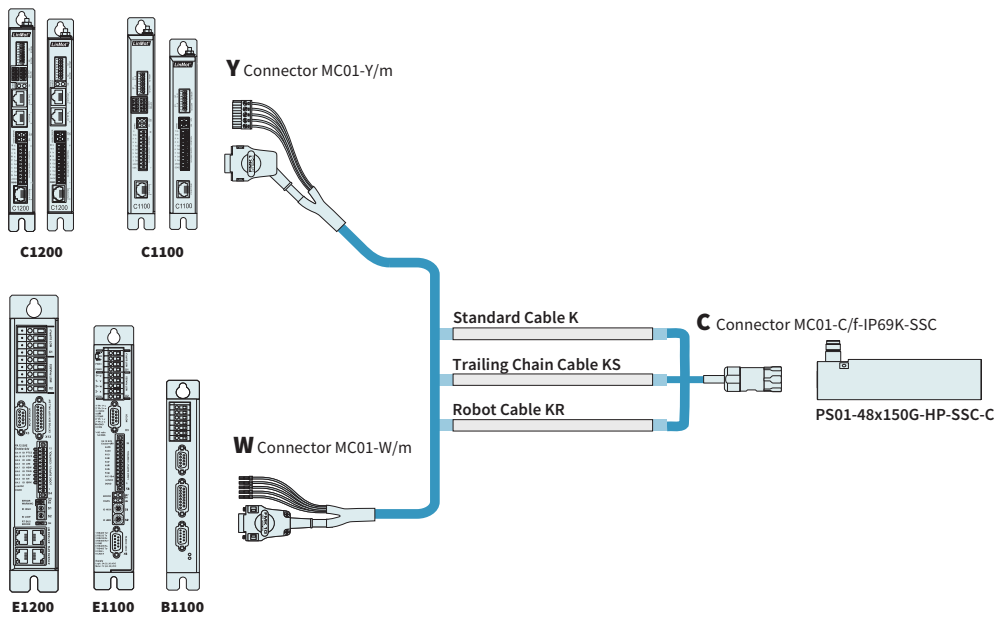
Dimensions in mm

Technical Data P01-48x150G/1070-HP-PB25-SSC				
Stroke				
Max. Stroke	mm	(in)	1070	(42.13)
Force				
Max. Force @ 48VDC	N	(lbf)	312	(70)
Max. Force @ 72VDC	N	(lbf)	312	(70)
Max. Cont. Force [Passive cooling / Fan / Fluid]	N	(lbf)	69 / - / 161	(16 / - / 36)
Max. Border Force relative	%		≤ 100	
Force Constant	N/A _{pk}	(lbf/A _{pk})	13.6	(3.06)
Velocity				
Max. Velocity @ 48VDC	m/s	(in/s)	3.2	(126)
Max. Velocity @ 72VDC	m/s	(in/s)	4.8	(189)
Position Detection				
Repeatability	mm	(in)	±0.05	(±0.002)
Linearity	%		± 1.05	
Electrical Data				
Max. Current @ 48VDC	A _{pk}		23	
Max. Current @ 72VDC	A _{pk}		23	
Max. Cont. Current [Passive cooling / Fan / Fluid]	A _{pk}		5.1 / - / 11.8	
Thermal Data				
Max. Winding Temperature (Sensor)	°C		120	
Thermal Resistance [Passive cooling / Fan / Fluid]	°K/W		2.7 / - / 0.5	
Thermal Time Constant [Passive cooling / Fan / Fluid]	s		2100 / - / 260	
Mechanical Data				
Slider Length	mm	(in)	1400	(55)
Slider Mass	g	(lb)	5910	(13)



Item	Description	Item-No.
PS01-48x150G-HP-SSC-C	Stator Stainless Steel IP69K	0150-4589
PS01-48x150G-HP-SSC-C-FC	Stator stainless steel IP69K, FC	0150-4590
PL01-27x1400/1320	Slider 'High Clearance'	0150-1588

Motor Cable



ORDERING INFORMATION

STANDARD CABLE

Item	Description	Item-No.
K15-W/C-SSC	Motor Cable W/C-SSC, Custom length	0150-3539
K15-Y-Fe/C-SSC-	Motor Cable Y-Fe/C-SSC, Custom length	0150-3630

TRAILING CHAIN CABLE

Item	Description	Item-No.
KS10-W/C-SSC-2	Trailing Chain Cable W/C-SSC, 2 m	0150-2675
KS10-W/C-SSC-4	Trailing Chain Cable W/C-SSC, 4 m	0150-2676
KS10-W/C-SSC-6	Trailing Chain Cable W/C-SSC, 6 m	0150-2677
KS10-W/C-SSC-8	Trailing Chain Cable W/C-SSC, 8 m	0150-2678
KS10-W/C-SSC-	Trailing Chain Cable W/C-SSC, Custom length	0150-3358
KS10-Y/C-SSC-2	Trailing Chain Cable Y/C-SSC, 2 m	0150-2679
KS10-Y/C-SSC-4	Trailing Chain Cable Y/C-SSC, 4 m	0150-2680
KS10-Y/C-SSC-6	Trailing Chain Cable Y/C-SSC, 6 m	0150-2681
KS10-Y/C-SSC-8	Trailing Chain Cable Y/C-SSC, 8 m	0150-2682
KS10-Y-Fe/C-SSC-	Trailing Chain Cable Y/C-SSC, Custom length	0150-3574

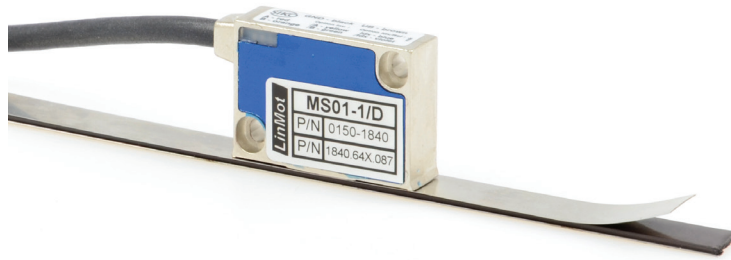
ROBOT CABLE

Item	Description	Item-No.
KR10-W/C-SSC-	Robot Cable KR05-W/C-SSC-, Custom length	0150-3536

CONNECTOR & CABLE (INDIVIDUAL)

Item	Description	Item-No.
MC01-W/m	Motor Connector W/m	0150-3140
MC01-Y-Fe/m	Motor Connector Y-Fe/m	0150-3289
MC01-C/f-IP69K-SSC	Motor Connector C/f, IP69K, SSC	0150-3306
K15-04/05	Motor Cable per m	0150-1978
KS10-04/05	Trailing Chain Cable per m	0150-1977
KR10-04/05	Robot Cable per m	0150-1830

EXTERNAL POSITION SENSORS



Item	Description	Item-No.
MS01-1/D	Linear Encoder 1µm, A/B (for incremental strip)	0150-1840
MB01-1000	Magnetic incremental strip for MS01-1/D, per cm	0150-1963
KS025-D/D-Encoder	Special cable KS025-D/D-Encoder- (Length in m)	0150-3166
KS025-D/D15-Encoder	Special cable KS025-D15/D-Encoder- (Length in m)	0150-3168

FIND MORE PRODUCT DETAILS IN THE CHAPTER "ACCESSORIES".



Item	Description	Item-No.
MS01-1/D-SSI	Linear Encoder 1µm, A/B (for absolute strip)	0150-2095
MB01-1000-ABS	Magnetic absolute strip for MS01-1/D-SSI (per cm)	0150-2096
EC01-ABS/ENC-12-S	MS01-1/D-SSI Encoder connector straight	0150-3616
KSS01-12-D15/ABS-ENC	For MS01-1/D-SSI on C1100/C1200/C1400/E1200/E1400 Drives	0150-3652

FIND MORE PRODUCT DETAILS IN THE CHAPTER "ACCESSORIES".

SLIDER MOUNTING

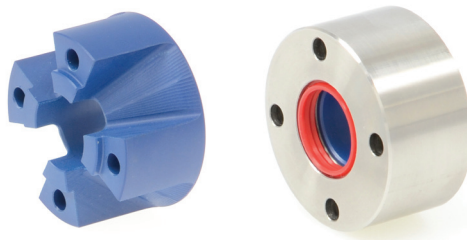


5

Item	Description	Item-No.
PLF01-28-SS	Fixed Bearing Set for 27 mm and 28 mm Slider, Stainless steel	0150-3297
PLL01-27	Floating support for PL01-27 sliders	0150-3294

FIND MORE PRODUCT DETAILS IN THE CHAPTER "ACCESSORIES".

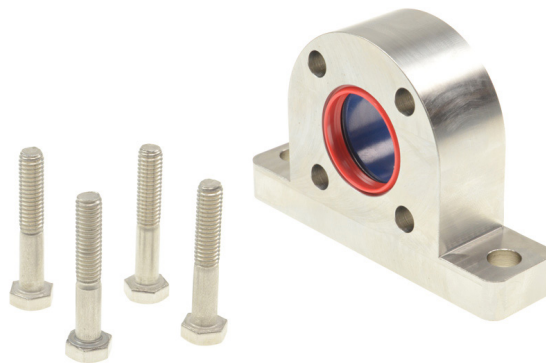
BEARING KITS



Item	Description	Item-No.
PB02-48x25-P-WD	Bearing for PS01-48x...-SSC (Plastic)	0150-3271
PB01-48x25-P-SSC	Bearing for PS01-48x...-SSC, stainless steel	0150-3281

FIND MORE PRODUCT DETAILS IN THE CHAPTER "ACCESSORIES".

BEARING FLANGE



Item	Description	Item-No.
PB03-48x25-SSC	Bearing for PS01-48x...-SSC (Stainless)	0150-3738

FIND MORE PRODUCT DETAILS IN THE CHAPTER "ACCESSORIES".