

# Pharmaceutical and Hygiene Industry Products

**LinMot®**



## Drives & Motors, Made for the Pharmaceutical and

LinMot has the right product selection for your demanding pharmaceutical and hygienic applications. LinMot motors are highly dynamic, provide a very high protection class while requiring very low maintenance and are easy to clean.

### Guided Motors



DM01 - Series

Drive solution with protection class IP64S consisting of a linear guide and a permanently integrated LinMot linear motor. Stroke lengths up to 575 mm and peak force up to 572 N are offered.

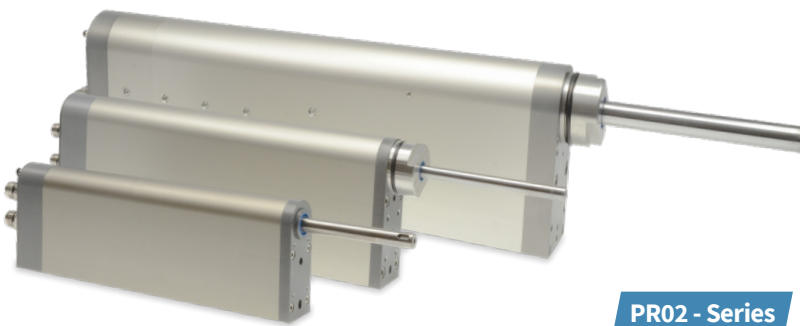
### Stainless steel linear motors



P01 - Series

Motor series completely made of stainless steel (EN 1.4404/AISI 316) for highest hygienic requirements with protection class up to IP69K.

### Linear Rotary Motors



PR02 - Series

Motor series with independently programmable linear and rotary direct drive in a slim housing. Available with the following optional features: Built-in precision torque measuring, integrated force sensor, vertical load compensation, hollow shaft.

### Servo Drives

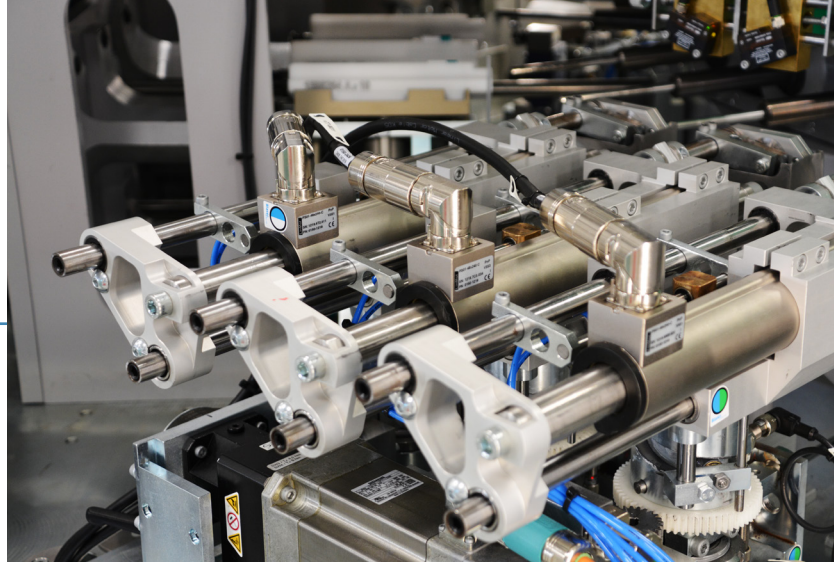


The listed motors can be controlled by LinMot servo drives of various power classes. Depending on the product series, the control electronics communicate via EtherNet/IP, CIP Sync, EtherCAT (CiA402, SoE), PROFINET, ProfiDrive, Sercos III, Powerlink or CANopen.

# Hygiene Industry

## Packing with LinMot

Linear motors from LinMot have been used in packaging machines for over twenty years. Continuously innovating motor designs, they offer a decisive advantage: flexibility. The freely programmable motion and force progression of the drives makes it possible to design stroke movements in such a way that the mechanics around the motor remain unaffected during product changeover. The latest LinMot motor designs incorporate clean surfaces suitable for FDA and clean applications.



## Filling with LinMot

Users wishing to combine the advantages of dosing based on flow measurement with those of piston dosing in a rotary filling machine now have clean design LinMot motor options. Using LinMot stainless steel motors, the stroke movement of the filling needles can be mechanically decoupled from the movement of the carousel. Even highly dynamic needle raising applications are possible. Unlike mechanical lifting curves, electrical direct drives do not exert any destructive forces on the bearing shafts.



## Closing with LinMot

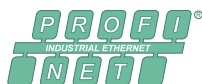
A new product on the production line every 30 minutes. What was still considered an exception a few years ago is increasingly becoming part of everyday life. Plant engineers solve this challenge by using purely electrically driven PR02 linear rotary motors from LinMot, which consist of separately controlled linear motors and rotary motors. This results in capping solutions for the user that allow the decisive parameters such as stroke, impact force, angle of rotation and torque to be adjusted via the operator interface of the packaging machine.



RS 232



RS 485





# ALL LINEAR MOTION FROM A SINGLE SOURCE

## Europe / Asia Headquarters

NTI AG - LinMot & MagSpring  
Bodenaeckerstrasse 2  
CH-8957 Spreitenbach  
Switzerland

☎ +41 56 419 91 91

✉ [office@linmot.com](mailto:office@linmot.com)

🏠 [www.linmot.com](http://www.linmot.com)

## North / South America Headquarters

LinMot USA Inc.  
N1922 State Road 120, Unit 1  
Lake Geneva, WI 53147  
USA

☎ 262.743.2555

✉ [usasales@linmot.com](mailto:usasales@linmot.com)

🏠 [www.linmot-usa.com](http://www.linmot-usa.com)



**LinMot®**

