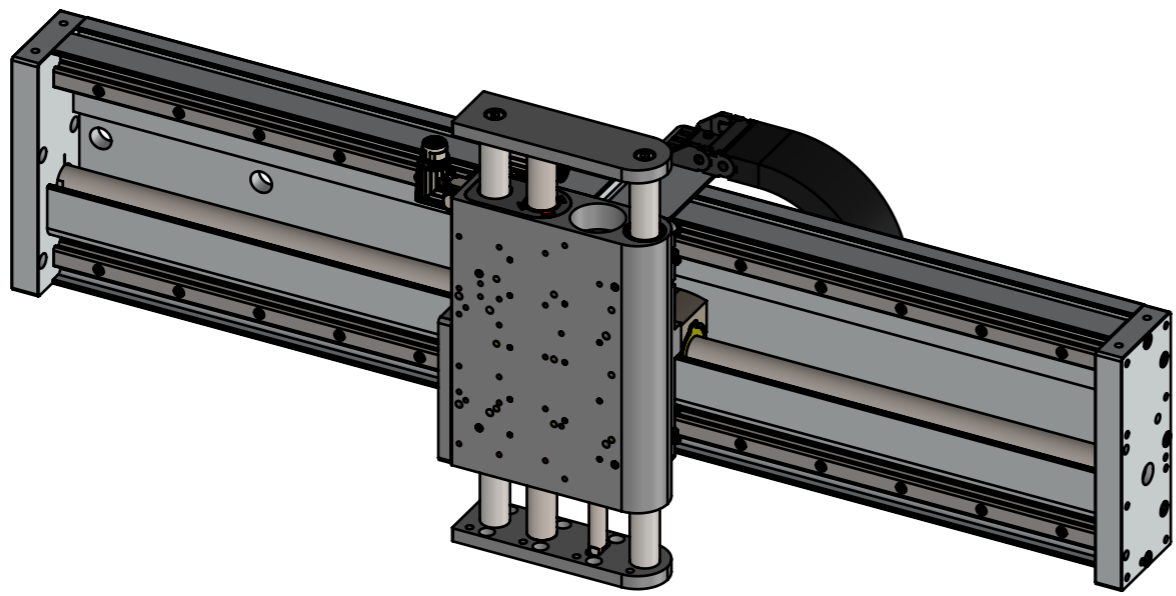
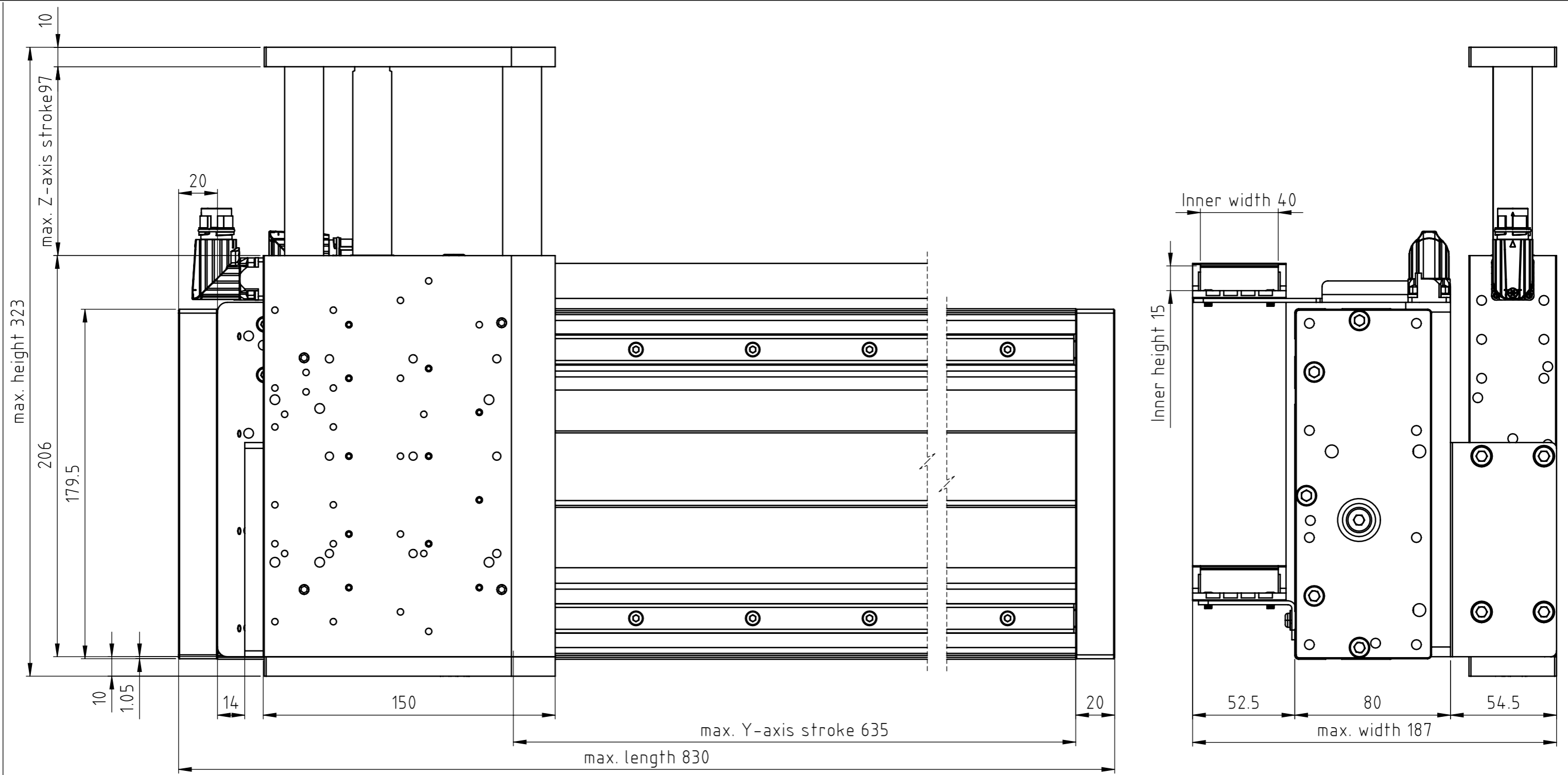


The copyright to this document, which is personally entrusted to the recipient, remains with our company. Without our written permission, the document may not be copied nor reproduced nor communicated or made accessible to third parties without our written permission.



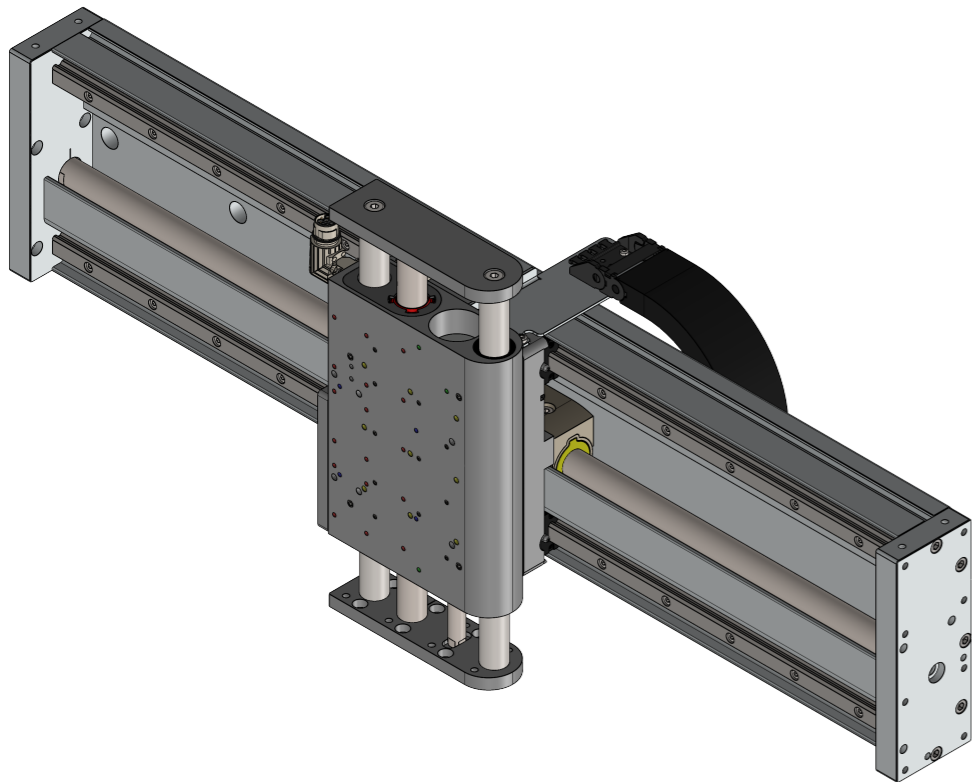
A	Document created	06.11.2025	JB	FH
Rev.	Change	Date	Author	Appr.

General tolerance DIN ISO 2768 - mK	Created by J.-E. Beekhuis	Status 06.11.2025/jb	Material
LinMot®	0380-0106_TP03_635-1CF37Sx120_95-37x120F_MS03_TC01		<input type="checkbox"/> Safety Rel. Weight (g) <input type="checkbox"/> UL-Rel. 0.00
NTI AG LinMot & MagSpring Bodenaeckerstrasse 2 CH-8957 Spreitenbach	Title, additional title TP03_635-1CF37Sx120_ 95-37x120F_MS03_TC01 Transfer portal / EM01-37 & DM03-37 Art.No.: 0300-0083		Document type Assembly drawing Drawing number / Index 0380-0106A
Template type: SW2020 Version: V1-1 SW_A3_hori_Sheet_format_V1-1	Scale 1:2		Sheet 1 / 3 A3

The copyright to this document, which is personally entrusted to the recipient, remains with our company. Without our written permission, the document may not be copied nor reproduced nor communicated or made accessible to third parties without our written permission.

Stage type	TP03_635-1CF37Sx120_95-37x120F_MS03_TC01	
Motor type	Horizontal: 0150-4740 EM01-37-830_635_1CE37Sx120F-HP-BE02-MD01-R	Vertical: 0150-5974 DM03-37x120F-HP-R-95_CS10_MS03
Stroke	635	95
Max. Force@48VDC [N]	-	255
Max. Force@72VDC [N]	255	255
Position resolution [mm]	0.005	0.005
Position resolution + External encoder mm]	0.001	-
Repeatability [mm]	±0.05	±0.05
Repeatability + External encoder mm]	±0.001	-
Max. Velocity@48VDC [m/s]	-	4.9
Max. Velocity@72VDC [m/s]	3.5	7.3
Deviation	see datasheet	see datasheet
Moving mass [kg]	1.810	1.970
Module mass [kg]	16.020	5.440
Cable weight [kg/m]	0.083	
Cable chain weight [kg/m]	0.210	
Max. payload	see datasheet	
Grease type - Motor	0150-1954 / 0150-1955 LU02	
Grease type - rail carriage / Bearings	SKF LGEP 2	0260-0061 SKF LGFP 2
Grease type - MagSpring	-	0150-1954 / 0150-1955 LU02

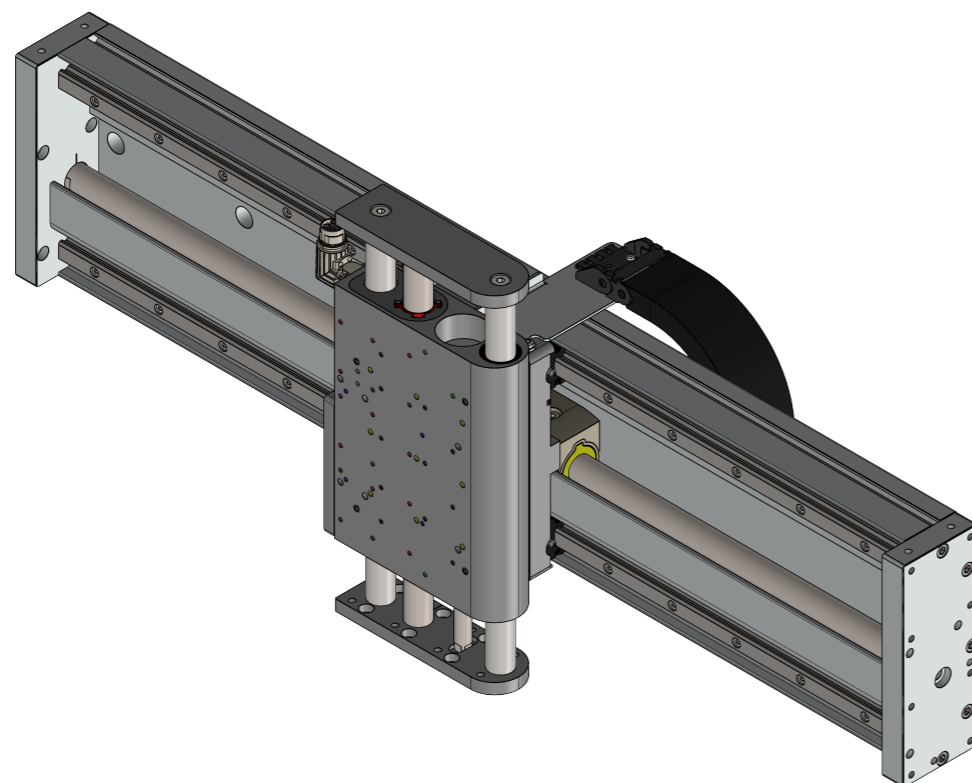
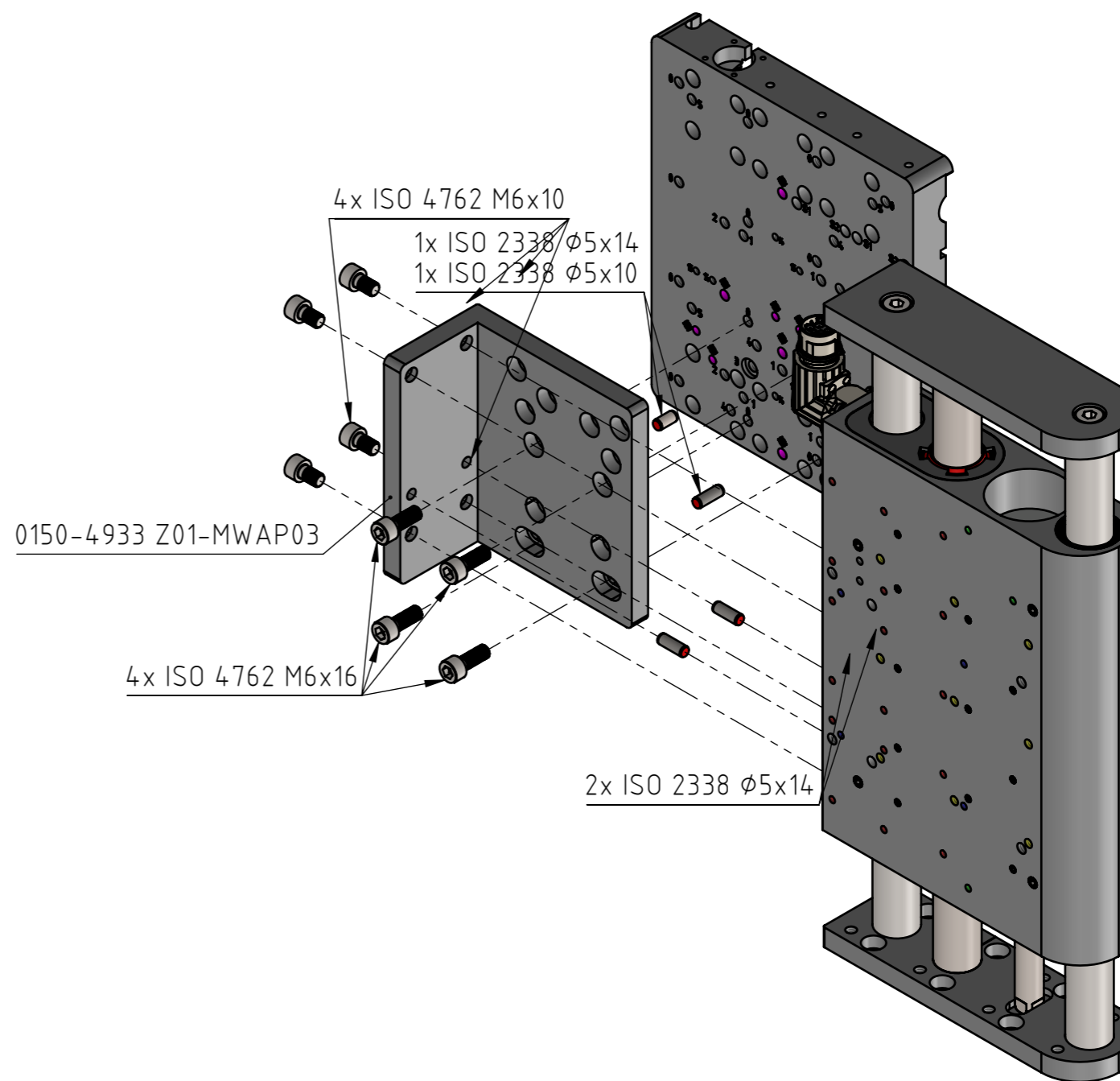
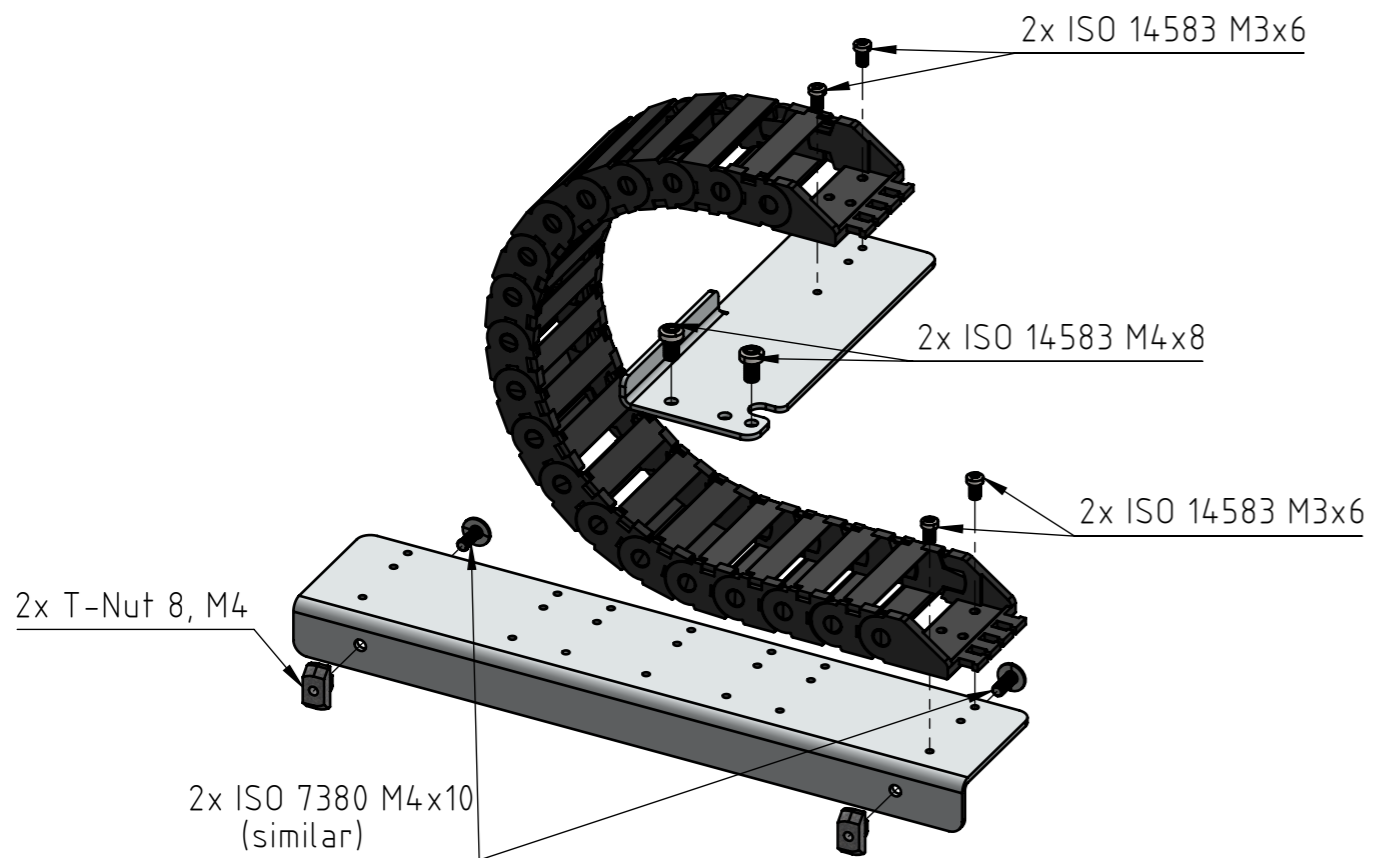
Accessories		
Stage type	TP03_635-1CF37Sx120_95-37x120F_MS03_TC01	
Motor type	Horizontal: 0150-4740 EM01-37-830_635_1CE37Sx120F-HP-BE02-MD01-R	Vertical: 0150-5974 DM03-37x120F-HP-R-95_CS10_MS03
Safety	Available: not chosen	Not available
Clean room	Not available	Available: not chosen
External encoder	Available: not chosen	Not available
Force sensor	Not available	Available: not chosen
Trailing chain kit	Available: TC01	Not available
Pneumatic holding brake	Not available	Not available
Pillar system	Not available	Not available



Rev.	Change	Date	Author	Appr.
A	Document created	06.11.2025	JB	FH

General tolerance DIN ISO 2768 - mK	Created by J.-E. Beekhuis	Status 06.11.2025 / jb	Material
LinMot®	0380-0106_TP03_635-1CF37Sx120_95-37x120F_MS03_TC01		<input type="checkbox"/> Safety Rel. Weight (g) <input type="checkbox"/> UL-Rel. 0.00
NTI AG LinMot & MagSpring Bodenaeckerstrasse 2 CH-8957 Spreitenbach	Title, additional title TP03_635-1CF37Sx120_95-37x120F_MS03_TC01 Transfer portal / EM01-37 & DM03-37 Art.No.: 0300-0083		Document type Assembly drawing Drawing number / Index 0380-0106A
Template type: SW2020 Version: V1-1 SW_A3_hori_Sheet_format_V1-1	Scale 1:5		Sheet 2 / 3 A3

The copyright to this document, which is personally entrusted to the recipient, remains with our company. Without our written permission, the document may not be copied nor reproduced nor communicated or made accessible to third parties without our written permission.



A	Document created	06.11.2025	JB	FH
Rev.	Change	Date	Author	Appr.

General tolerance DIN ISO 2768 - mK	Created by J.-E. Beekhuis	Status 06.11.2025 / jb	Material
LinMot®	0380-0106_TP03_635-1CF37Sx120_95-37x120F_MS03_TC01		<input type="checkbox"/> Safety Rel. Weight (g) <input type="checkbox"/> UL-Rel. 0.00
	Title, additional title TP03_635-1CF37Sx120_95-37x120F_MS03_TC01		Document type Assembly drawing
NTI AG LinMot & MagSpring Bodenaeckerstrasse 2 CH-8957 Spreitenbach	Transfer portal / EM01-37 & DM03-37 Art.No.: 0300-0083		Drawing number / Index 0380-0106A
Template type: SW2020 Version: V1-1 SW_A3_hori_Sheet_format_V1-1	Scale 2:5		Sheet 3 / 3 A3