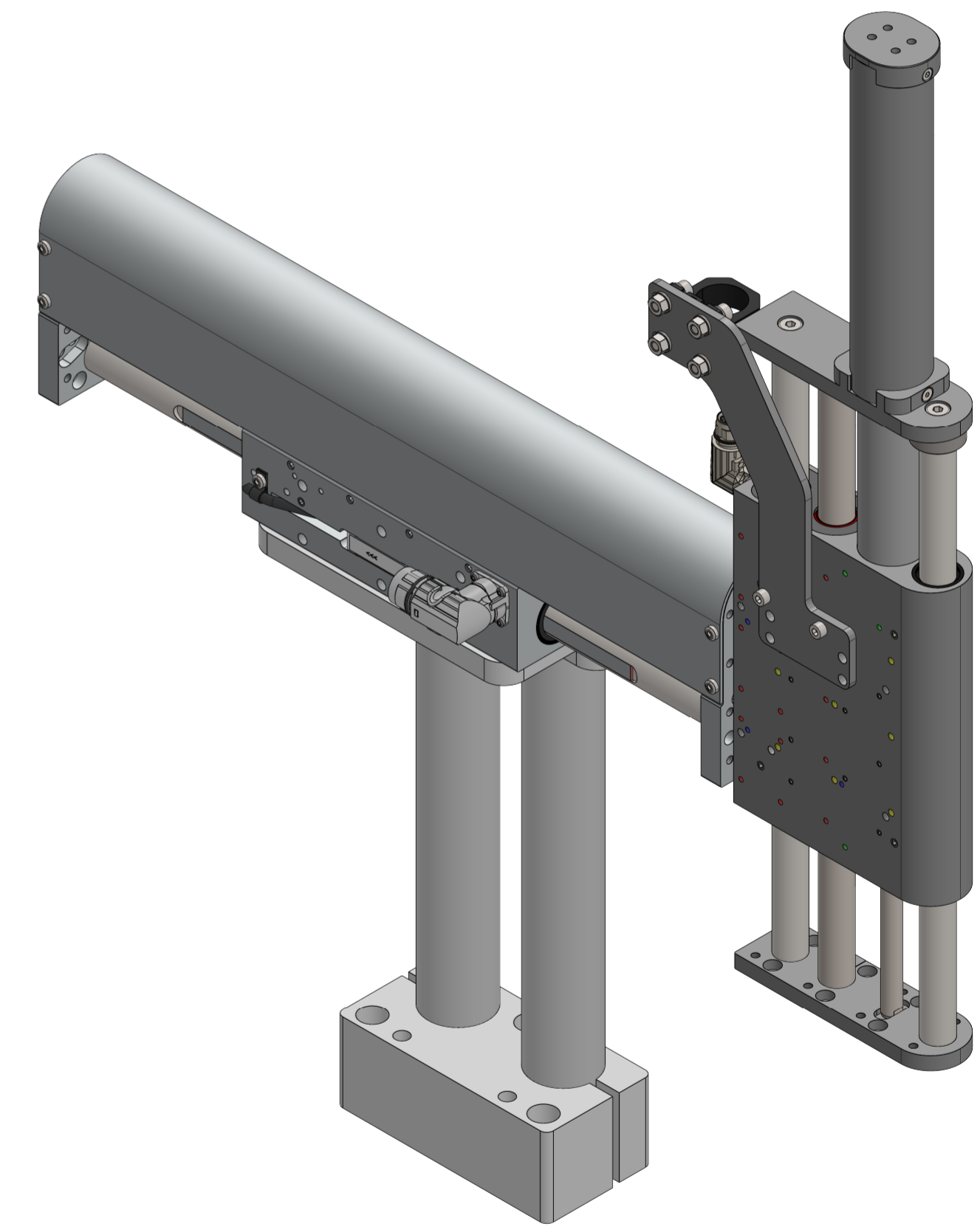
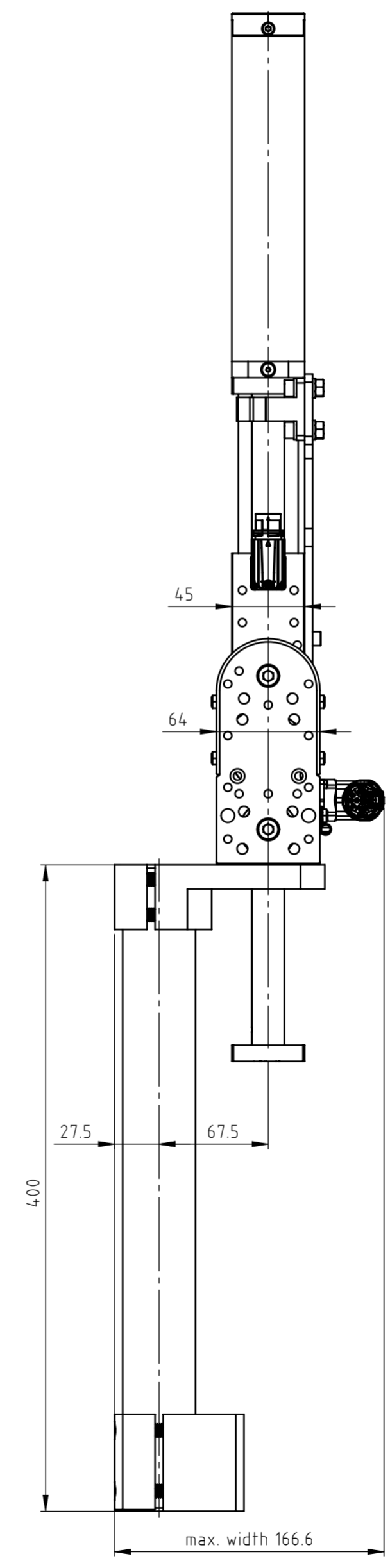
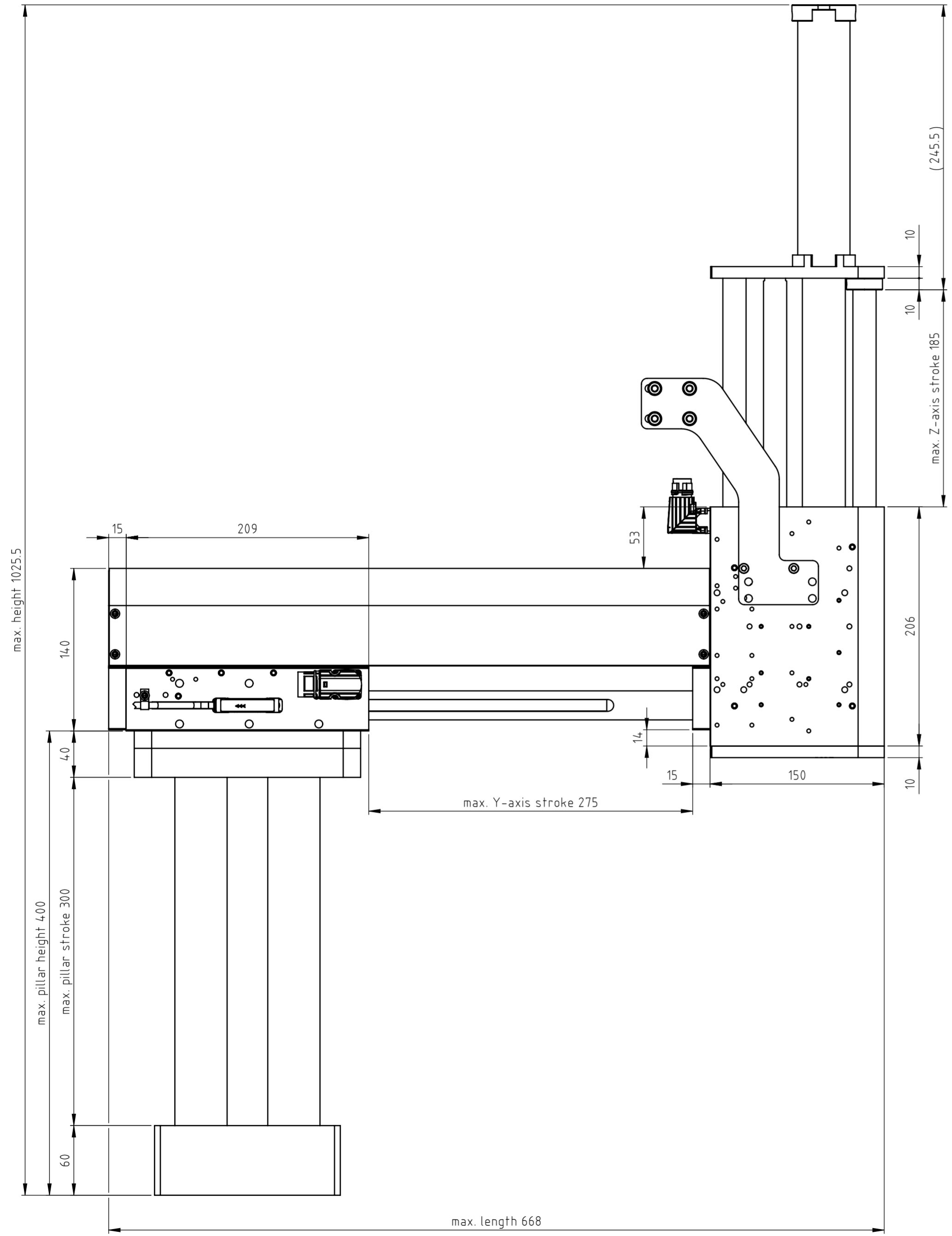


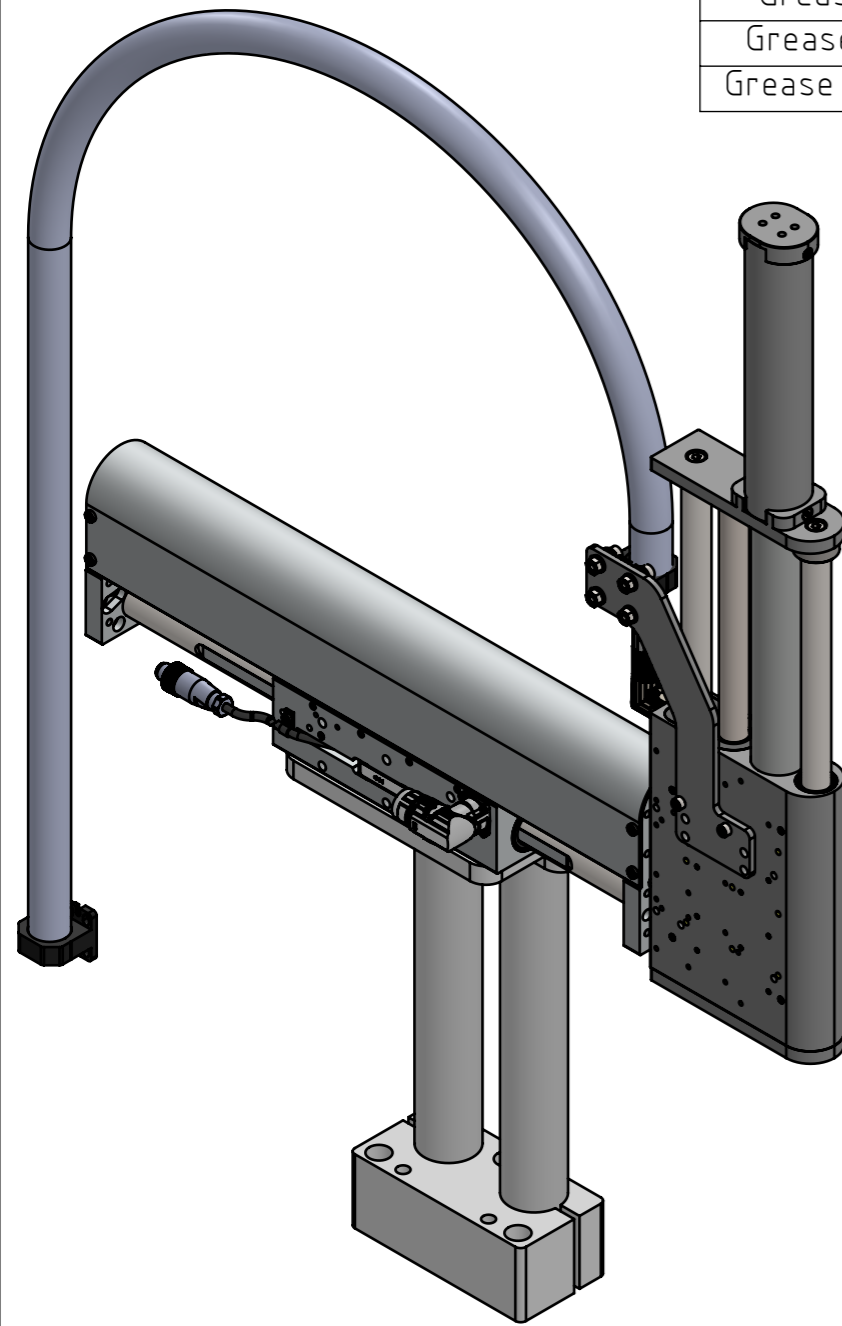
The copyright in this document, which is personally entrusted to the recipient, remains with our company. Without our written permission, the document may not be copied nor reproduced nor communicated or made accessible to third parties without our written permission.



A	Document created	15.11.2024	JB FH
Rev.	Change	Date	Author Appr.

General tolerance DIN ISO 2768 - mK	Created by J.-E. Beekhuis	Status 06.02.2025/jb	Material
LinMot®	File name 0380-0006_PP03_275-48x150G-EN02_185-37x120F-MS31_PS01_TC01	<input type="checkbox"/> Safety Rel.	Weight (g)
NTI AG LinMot & MagSpring Bodenaeckerstrasse 2 CH-8957 Spreitenbach	Title, additional title PP03_275-48x150G-EN02_185-37x120F-MS31_PS01_TC01	<input type="checkbox"/> UL-Rel.	Document type Assembly drawing
Template type: SW2020 Version: V1-1 SW_A2_hori_Sheet_format_V1-1	Pick&Place / DM01-48x150 & DM03-37 Art.No.: 0300-0006	Scale 1:3	Drawing number / Index 0380-0006A Sheet 1 / 3 A2

The copyright to this document, which is personally entrusted to the recipient, remains with our company. Without our written permission, the document may not be copied nor reproduced nor communicated or made accessible to third parties without our written permission.



Stage type	PP03_275-48x150G-EN02_185-37x120F-MS31_PS01_TC01	
Motor type	Horizontal: 0150-6365 DM01-48x150G-HP-C-275_CS01_EN02	Vertical: 0150-6009 DM03-37x120F-HP-R-185_CS10_MS31
Stroke	275	185
Max. Force@48VDC [N]	360	255
Max. Force@72VDC [N]	360	255
Position resolution [mm]	0.001	0.002
Repeatability [mm]	±0.001	±0.05
Max. acceleration [m/s ²]	< 50	< 50
Max. Velocity@48VDC [m/s]	2.7	2.5
Max. Velocity@72VDC [m/s]	4.1	3.8
Deviation	see datasheet	see datasheet
Moving mass [kg]	5.550	2.670
Module mass [kg]	9.450	6.710
Pillar mass [kg]		12.260
Cable weight [kg/km]		83.0
Cable tube weight [kg/m]		0.084
Max. payload	see datasheet	see datasheet
Grease type - Motor	0150-1954 / 0150-1955 LU02	
Grease type - Bearing	0260-0061 SKF LGFP 2	
Grease type - MagSpring	0150-1954 / 0150-1955 LU02	

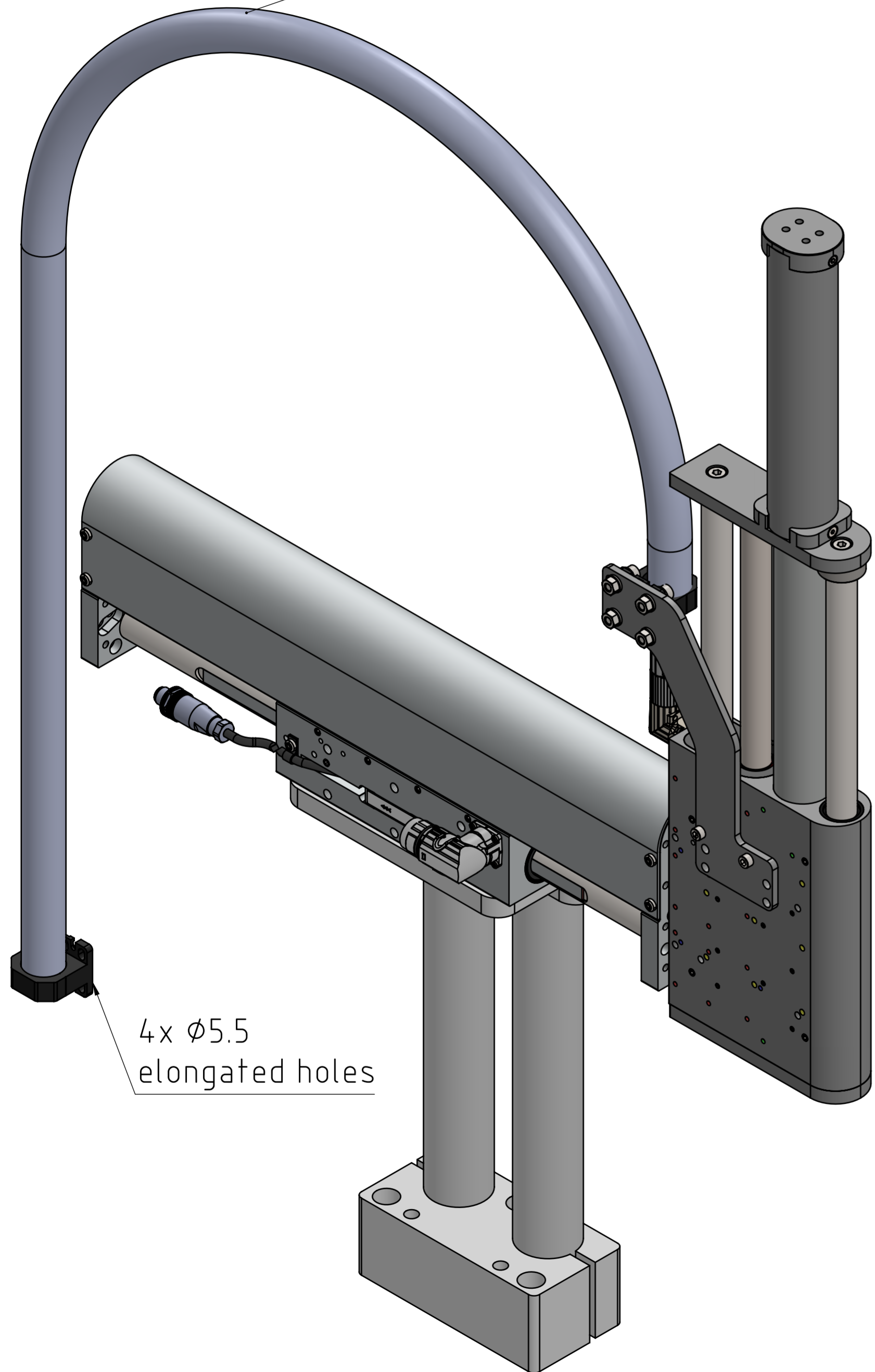
Accessories		
Stage type	PP03_275-48x150G-EN02_185-37x120F-MS31_PS01_TC01	
Motor type	Horizontal: 0150-6365 DM01-48x150G-HP-C-275_CS01_EN02	Vertical: 0150-6009 DM03-37x120F-HP-R-185_CS10_MS31
Safety	Available: not chosen	Not available
Clean room	Available: not chosen	Not available
External sensor	Chosen: 0150-4717 MS01-1/D-BiSS	Not available
Cover	Chosen	Not available
Cable guide	Chosen: TC01	Chosen: TC01
Pillar system	0150-4056 Z01-SB-45x2 0150-4045 Z01-SL-45x300 0150-4057 Z01-SA-45x2	Not available
Force sensor	Available: not chosen	Available: not chosen
Fan Kit	Available: not chosen	Not available

Rev.	Change	Date	Author	Appr.
A	Document created	15.11.2024	JB	FH

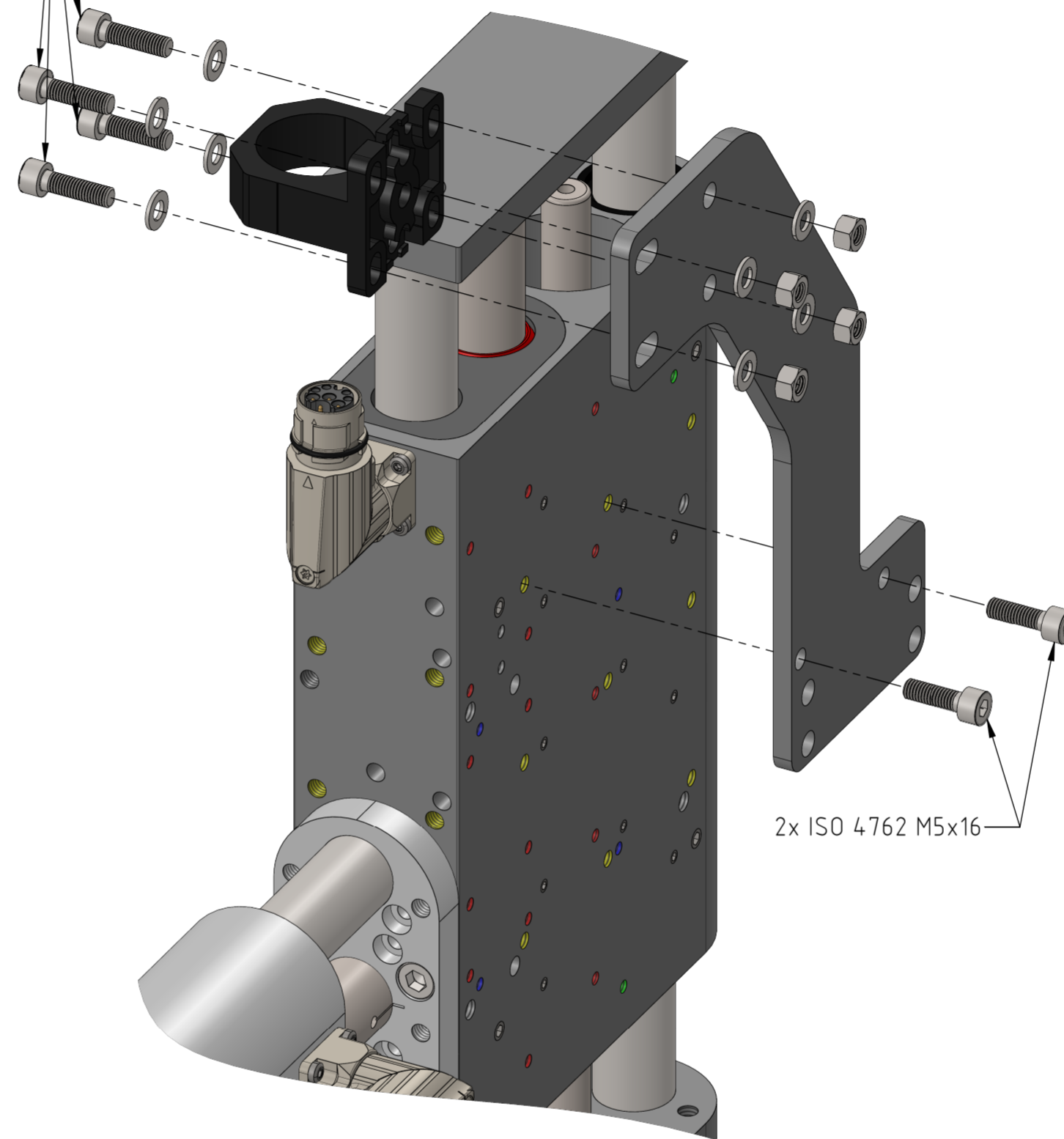
General tolerance DIN ISO 2768 - mK	Created by J.-E. Beekhuis	Status 06.02.2025/jb	Material
LinMot®	0380-0006_PP03_275-48x150G-EN02_185-37x120F-MS31_PS01_TC01		<input type="checkbox"/> Safety Rel. Weight (g) <input type="checkbox"/> UL-Rel.
NTI AG LinMot & MagSpring Bodenaeckerstrasse 2 CH-8957 Spreitenbach	Title, additional title PP03_275-48x150G-EN02_185-37x120F-MS31_PS01_TC01 Pick&Place / DM01-48x150 & DM03-37 Art.No.: 0300-0006		Document type Assembly drawing Drawing number / Index 0380-0006A
Template type: SW2020 Version: V1-1 SW_A3_hori_Sheet_format_V1-1	Scale 1:5		Sheet 2 / 3 A3

The copyright in this document, which is personally entrusted to the recipient, remains with our company. Without our written permission, the document may not be copied nor reproduced nor communicated or made accessible to third parties without our written permission.

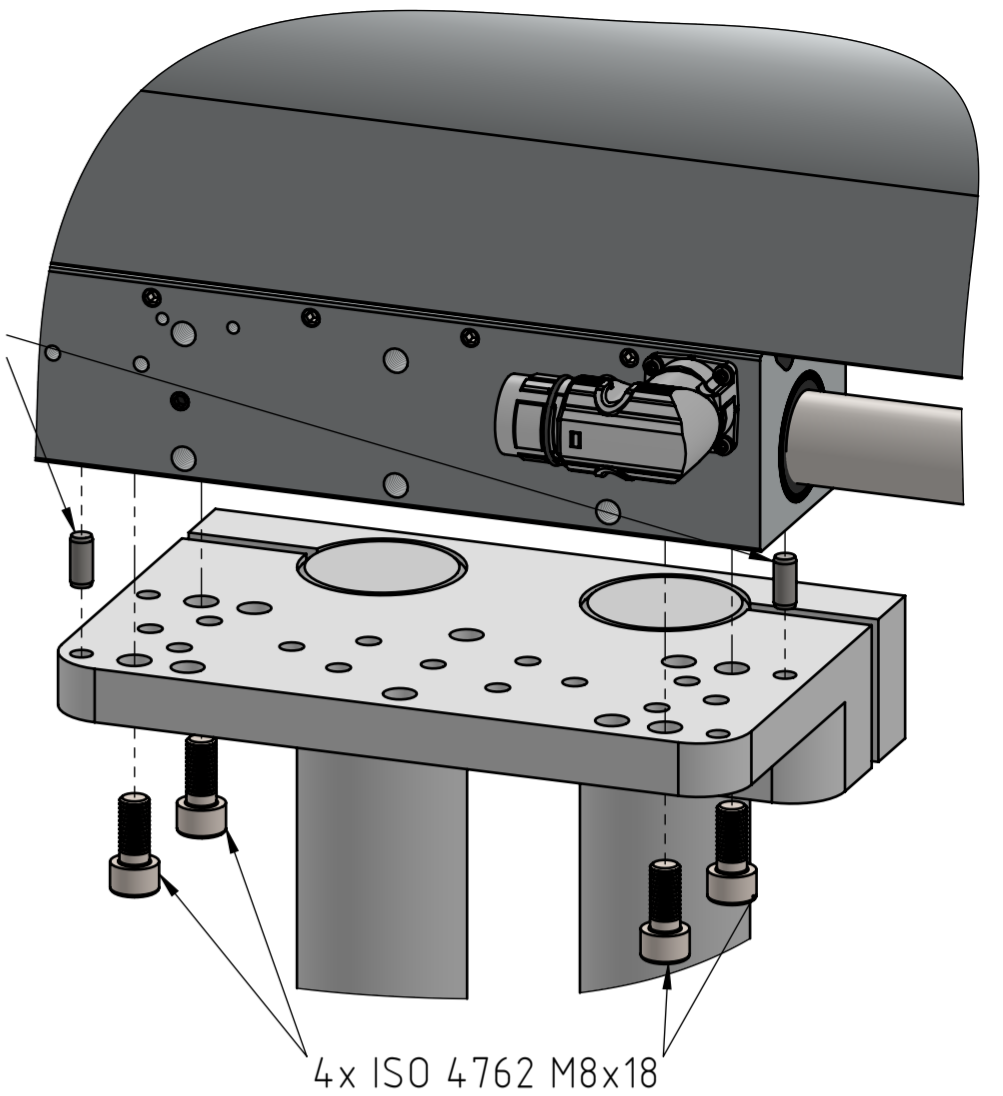
TC01: 1m cable tube
45mm minimum bending radius, static



4x ISO 4762 M5x18
8x ISO 7089 Ø5.3
4x ISO 7041 M5

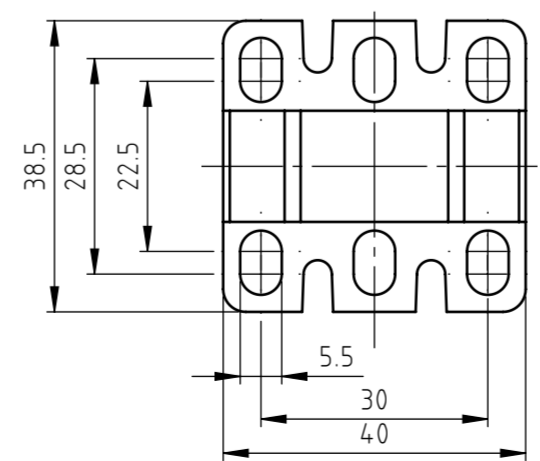


2x ISO 2338 Ø6x14



2x ISO 2338 Ø5x14

4x ISO 4762 M6x16



A	Document created	15.11.2024	JB	FH
Rev.	Change	Date	Author	Appr.

General tolerance DIN ISO 2768 - mK	Created by J.-E. Beekhuis	Status 06.02.2025/jb	Material
LinMot®	File name 0380-0006_PP03_275-48x150G-EN02_185-37x120F-MS31_PS01_TC01	<input type="checkbox"/> Safety Rel. <input type="checkbox"/> UL-Rel.	Weight (g)
NTI AG LinMot & MagSpring Bodenaeckerstrasse 2 CH-8957 Spreitenbach	Title, additional title PP03_275-48x150G-EN02_185-37x120F-MS31_PS01_TC01	Document type Assembly drawing	Drawing number / Index 0380-0006A
Template type: SW2020 Version: V1-1 SW_A2_hori_Sheet_format_V1-1	Pick&Place / DM01-48x150 & DM03-37 Art.No.: 0300-0006	Scale 2:5	Sheet 3 / 3 A2