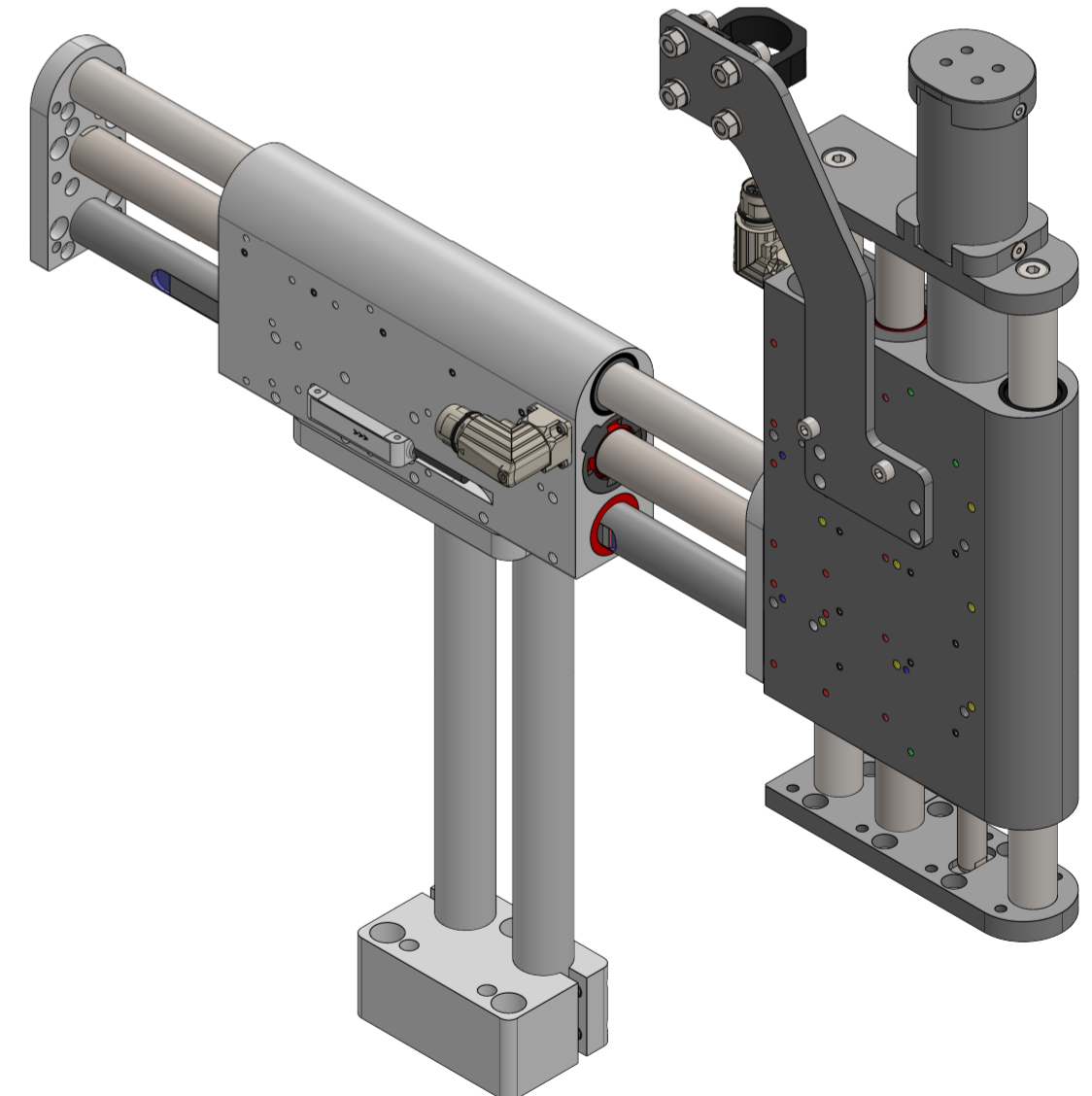
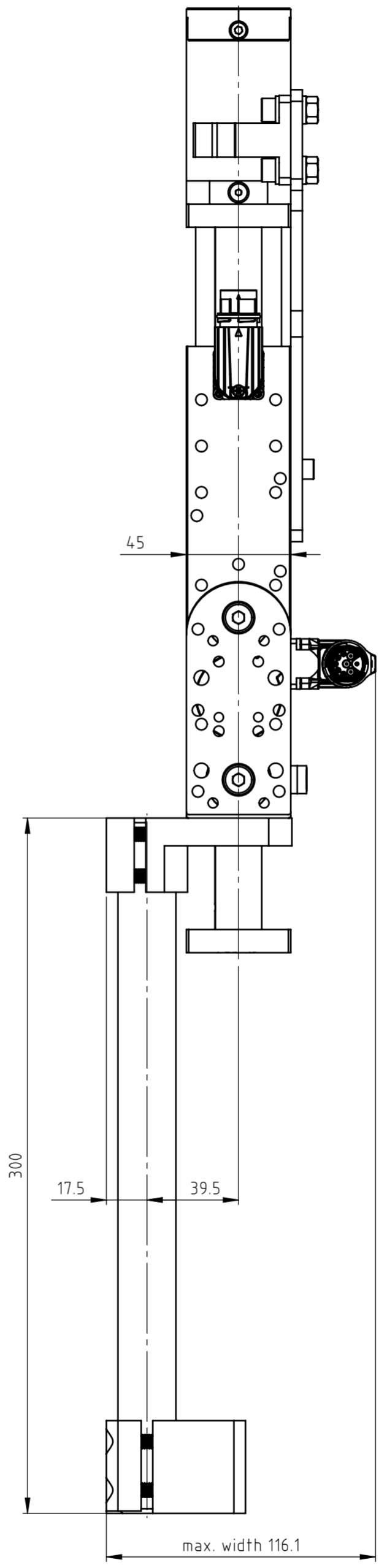
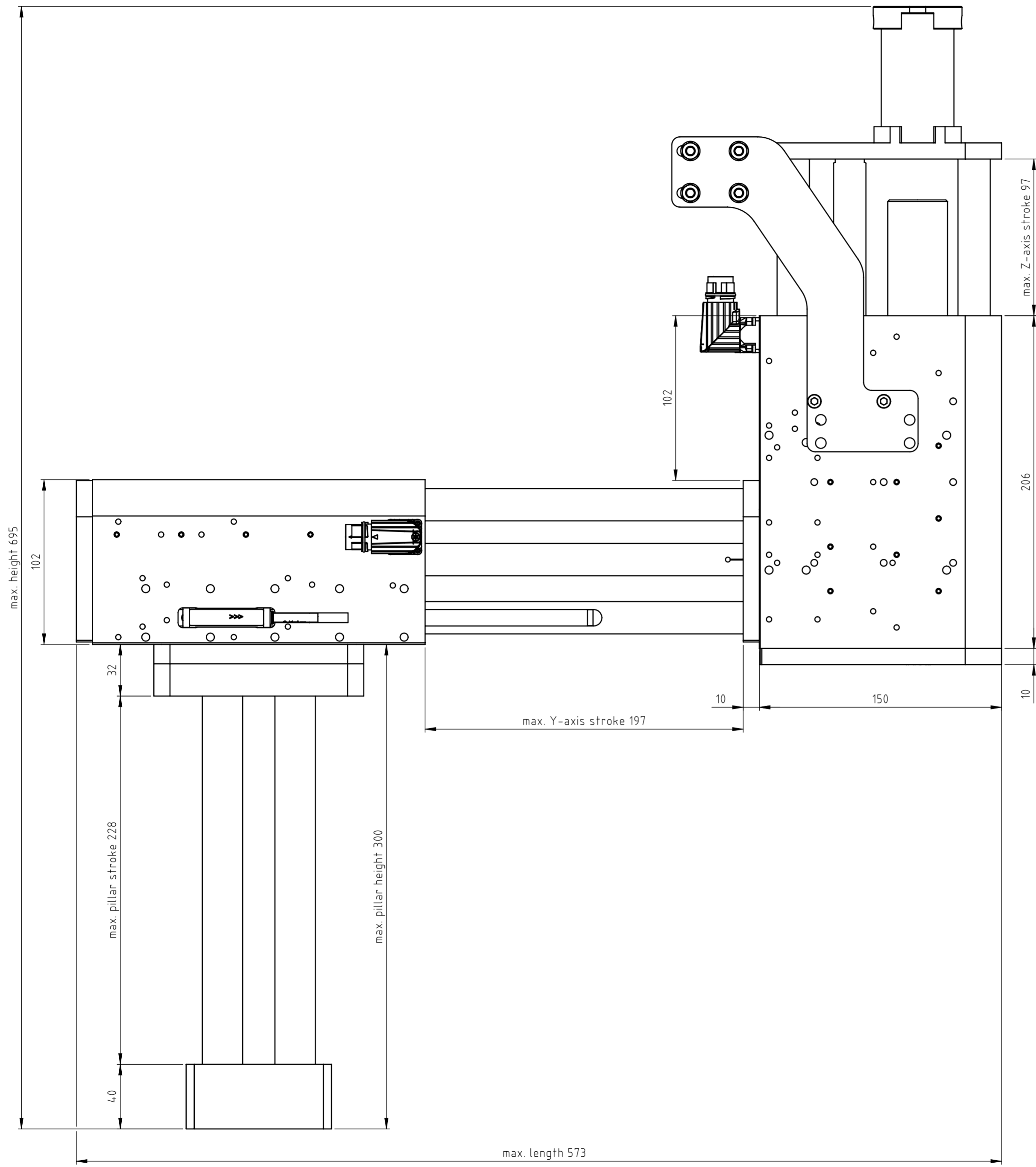


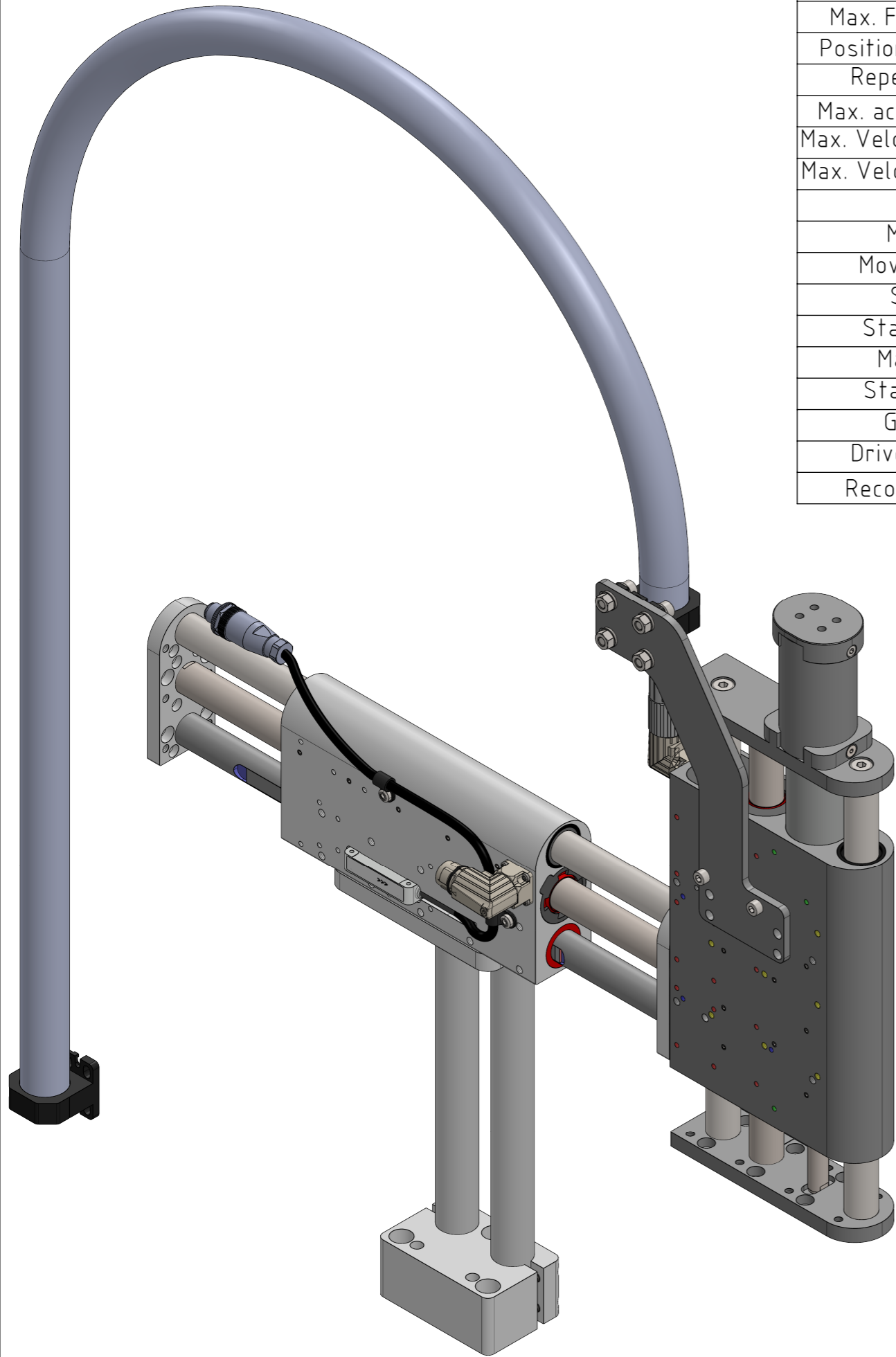
The copyright to this document, which is personally entrusted to the recipient, remains with our company. Without our written permission, the document may not be copied, reproduced, communicated or made accessible to third parties without our written permission.



A	Document created	14.11.2024	JB FH
Rev.	Change	Date	Author Appr.

General tolerance DIN ISO 2768 - mK	Created by J.-E. Beekhuis	Status 13.12.2024 / jb	Material
<b>LinMot®</b>	File name 0380-0005_PP_DM01-195-MT15-EN02_DM03-95-MT15-MS07_PS01_TC01	<input type="checkbox"/> Safety Rel. <input type="checkbox"/> UL-Rel.	Weight (g)
NTI AG LinMot & MagSpring Bodenaeckerstrasse 2 CH-8957 Spreitenbach	Title, additional title PP_DM01-195-MT15-EN02 _DM03-95-MT15-MS07_PS01_TC01	Document type Assembly drawing	
Template type: SW2020 Version: V1-1 SW_A2_hori_Sheet_format_V1-1	Pick&Place / DM01-37 & DM03-37	Drawing number / Index 0380-0005A	
Art.No.: 0300-0005	Scale 1:2		Sheet 1 / 3

The copyright to this document, which is personally entrusted to the recipient, remains with our company. Without our written permission, the document may not be copied nor reproduced nor communicated or made accessible to third parties without our written permission.



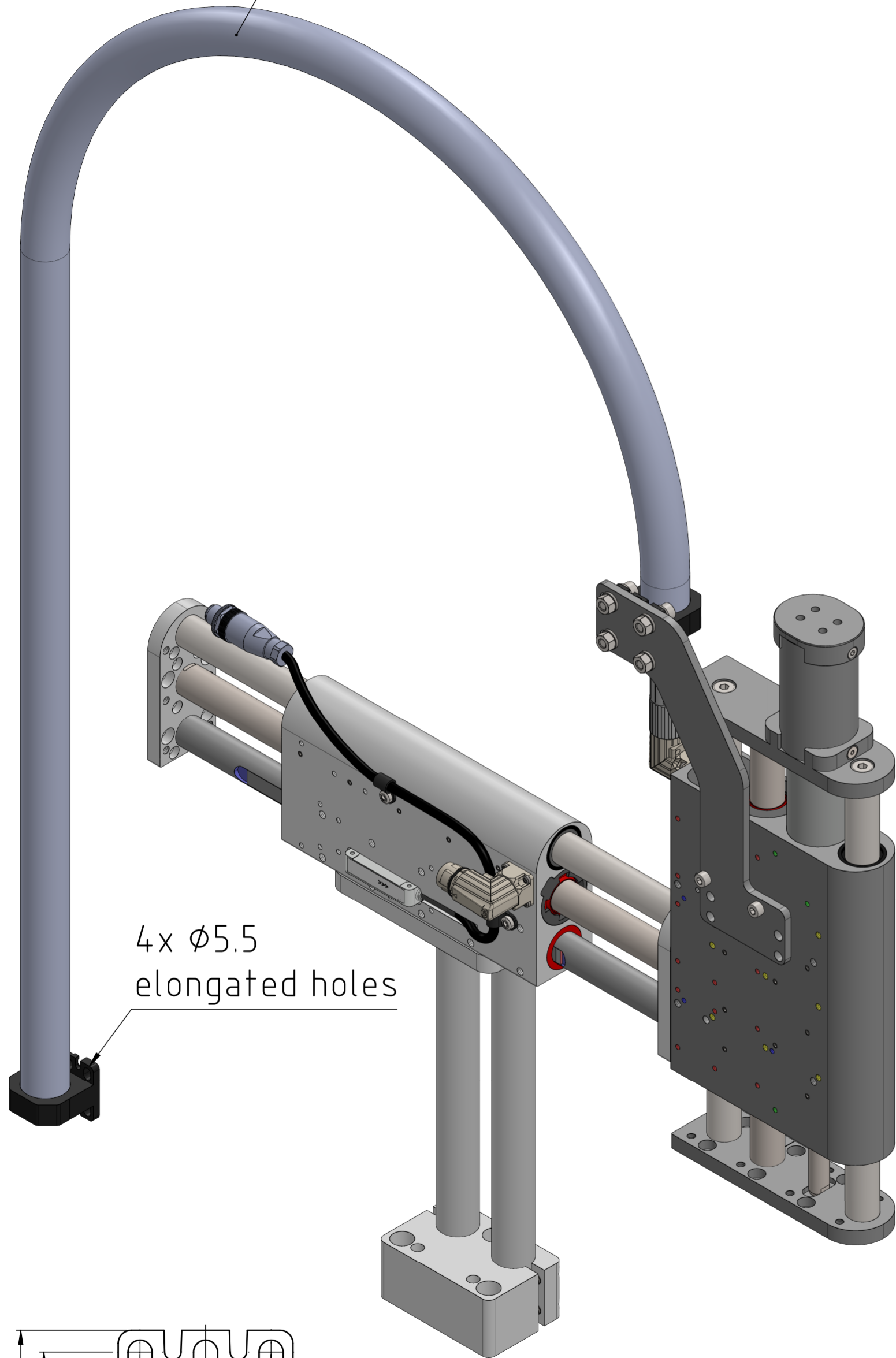
Stage type	PP_DM01-195-MT15_DM03-95-MT15-MS07_PS01_TC01	
Motor type	Horizontal: DM01-37x120F-HP-R-195_EN02	Vertical: DM03-37x120F-HP-R-95_CS10_MS07
Stroke	195	95
Max. Force@48VDC [N]	255	255
Max. Force@72VDC [N]	255	255
Position resolution [mm]	0.001	0.002
Repeatability [mm]	±0.001	±0.05
Max. acceleration [m/s <sup>2</sup> ]	< 50	< 50
Max. Velocity@48VDC [m/s]	2.5	2.5
Max. Velocity@72VDC [m/s]	3.8	3.8
Deviation	see datasheet	see datasheet
Moving part	Hardened steel, hard chrome-plated	Hardened steel, hard chrome-plated
Moving mass [kg]	2.600	0.940
Static part	Anodized aluminum	Anodized aluminum
Static mass [kg]	2.190	1.155
Max. payload	see datasheet	see datasheet
Stage mass [kg]	10.100	
Grease type	SKF LGFP 2	SKF LGFP 2
Drive architecture	Horizontal: Single	Vertical: Single
Recommended drive	C1200	C1200

Accessories		
Stage type	PP_DM01-195-MT15_DM03-80-MT08-MS11_PS01_TC01	
Motor type	Horizontal: DM01-37x120F-HP-R-195_EN02	Vertical: DM03-37x120F-HP-R-95_CS10_MS07
Safety	Available: not chosen	Not available
Clean room	Available: not chosen	Not available
External sensor	Chosen: 0150-4717 MS01-1/D-BiSS	Not available
Cover	Not available	Not available
Cable guide	Chosen: TC01	Chosen: TC01
Pillar system	0150-4058 Z01-SB-25x2 0150-4025 Z01-SL-25x300 0150-4059 Z01-SA-25x2	Not available
Force sensor	Available: not chosen	To be released
Fan Kit	Available: not chosen	Not available

Rev.	Change	Date	Author	Appr.
A	Document created	14.11.2024	JB	FH

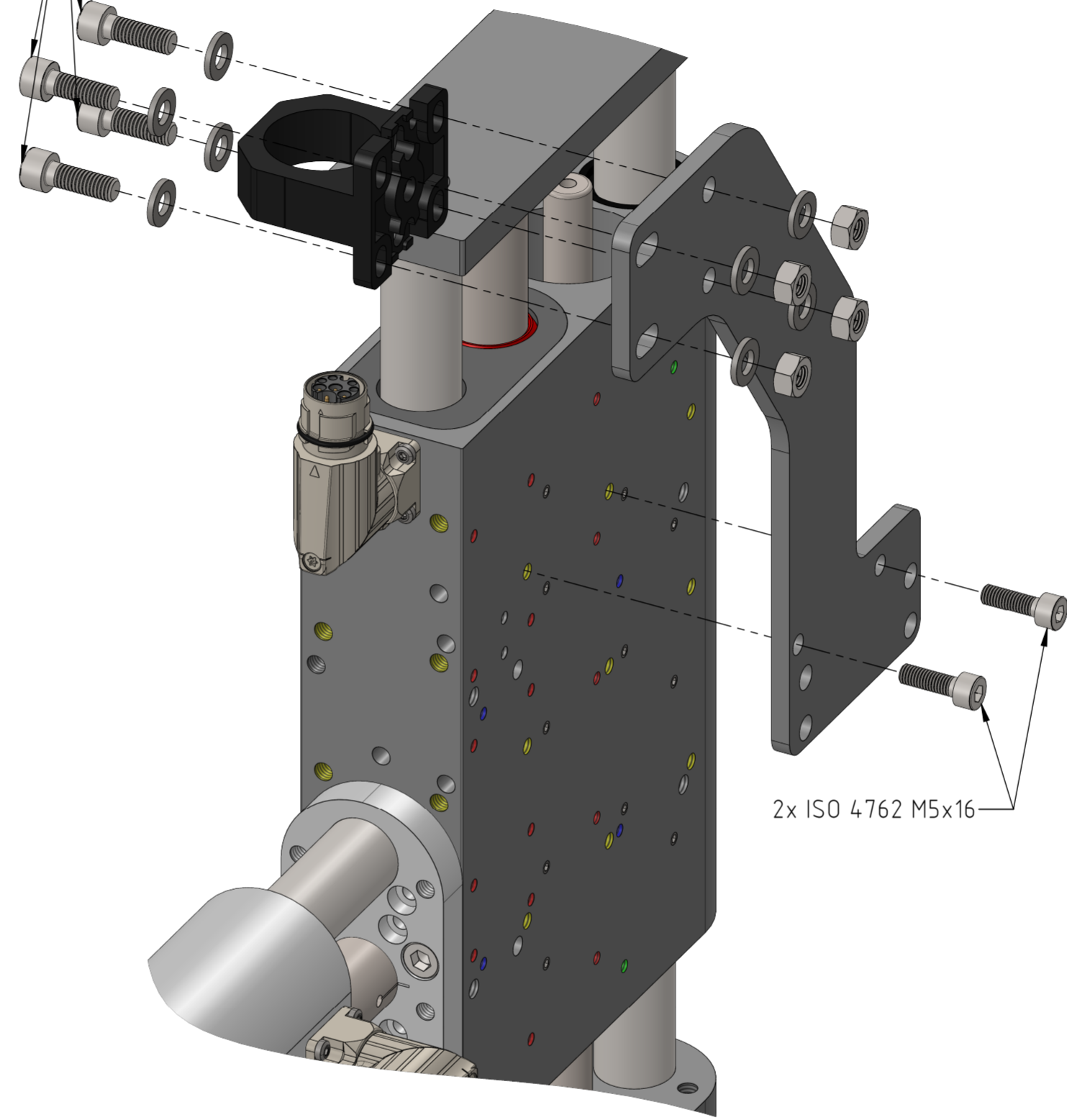
General tolerance DIN ISO 2768 - mK	Created by J.-E. Beekhuis	Status 13.12.2024 / jb	Material
<b>LinMot®</b>	0380-0005_PP_DM01-195-MT15-EN02_DM03-95-MT15-MS07_PS01_TC01		<input type="checkbox"/> Safety Rel. Weight (g)
			<input type="checkbox"/> UL-Rel.
NTI AG LinMot & MagSpring Bodenaeckerstrasse 2 CH-8957 Spreitenbach	Title, additional title PP_DM01-195-MT15-EN02 _DM03-95-MT15-MS07_PS01_TC01		Document type Assembly drawing
Template type: SW2020 Version: V1-1 SW_A3_hori_Sheet_format_V1-1	Pick&Place / DM01-37 & DM03-37 Art.No.: 0300-0005		Drawing number / Index 0380-0005A
	Scale 1:3		Sheet 2 / 3 A3

1m cable conduit  
45mm minimum bending radius, static

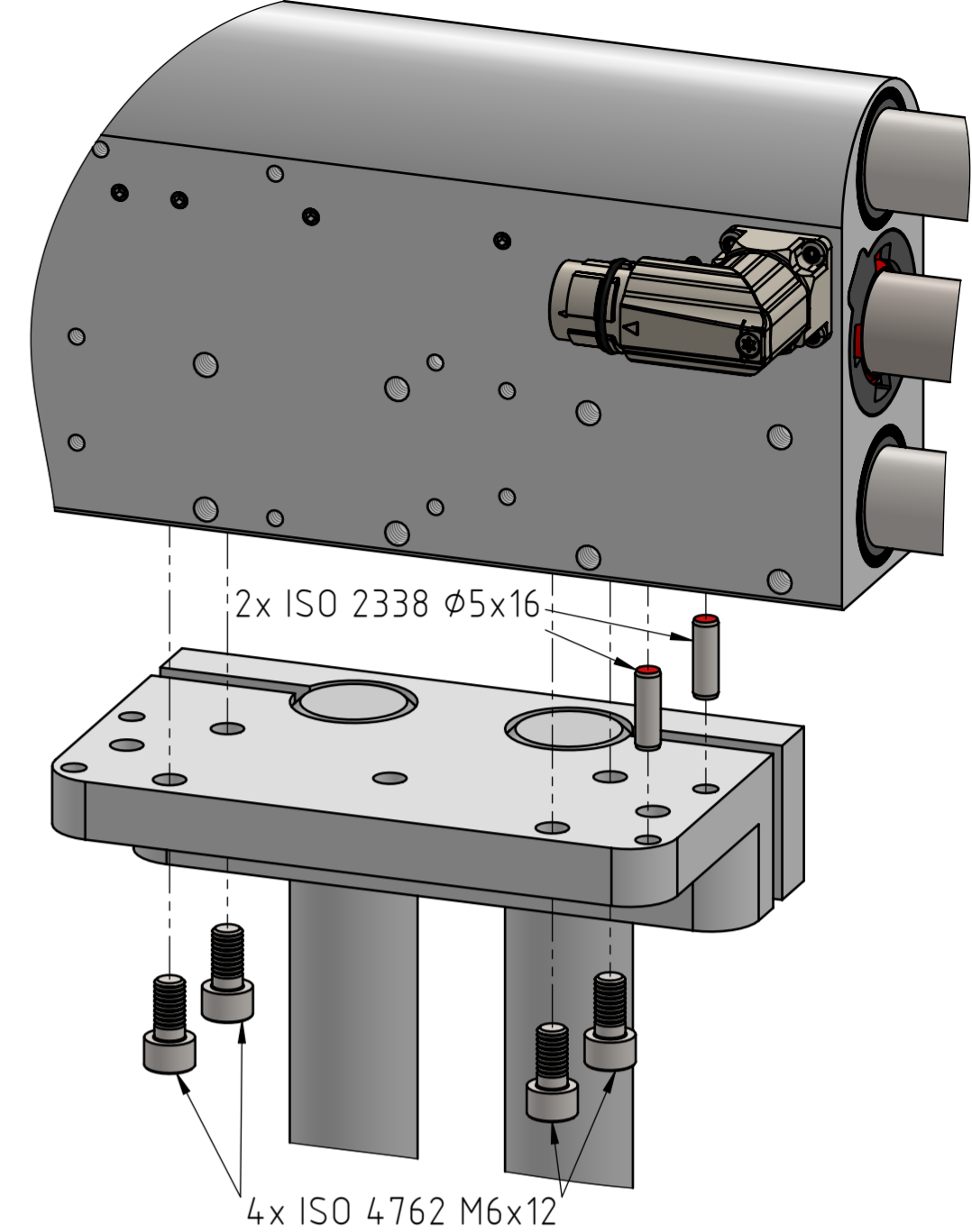


4x Ø5.5  
elongated holes

4x ISO 4762 M6x18  
8x ISO 7089 Ø6.4  
4x ISO 7041 M6



2x ISO 4762 M5x16

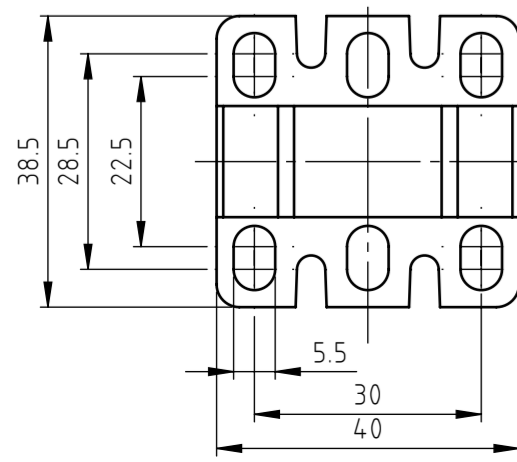


2x ISO 2338 Ø5x16

4x ISO 4762 M6x12

2x ISO 2338 Ø5x14

4x ISO 4762 M6x16



A	Document created	14.11.2024	JB	FH
Rev.	Change	Date	Author	Appr.

General tolerance DIN ISO 2768 - mK	Created by J.-E. Beekhuis	Status 13.12.2024 / jb	Material
<b>LinMot®</b>	File name 0380-0005_PP_DM01-195-MT15-EN02_DM03-95-MT15-MS07_PS01_TC01	<input type="checkbox"/> Safety Rel. <input type="checkbox"/> UL-Rel.	Weight (g)
NTI AG LinMot & MagSpring Bodenaeckerstrasse 2 CH-8957 Spreitenbach	Title, additional title PP_DM01-195-MT15-EN02 _DM03-95-MT15-MS07_PS01_TC01 Pick&Place / DM01-37 & DM03-37	Art.No.: 0300-0005	Document type Assembly drawing Drawing number / Index 0380-0005A
Template type: SW2020 Version: V1-1 SW_A2_hori_Sheet_format_V1-1	Scale 2:5	Sheet 3 / 3	A2

The copyright to this document, which is personally entrusted to the recipient, remains with our company. Without our written permission, the document may not be copied nor reproduced nor communicated or made accessible to third parties without our written permission.