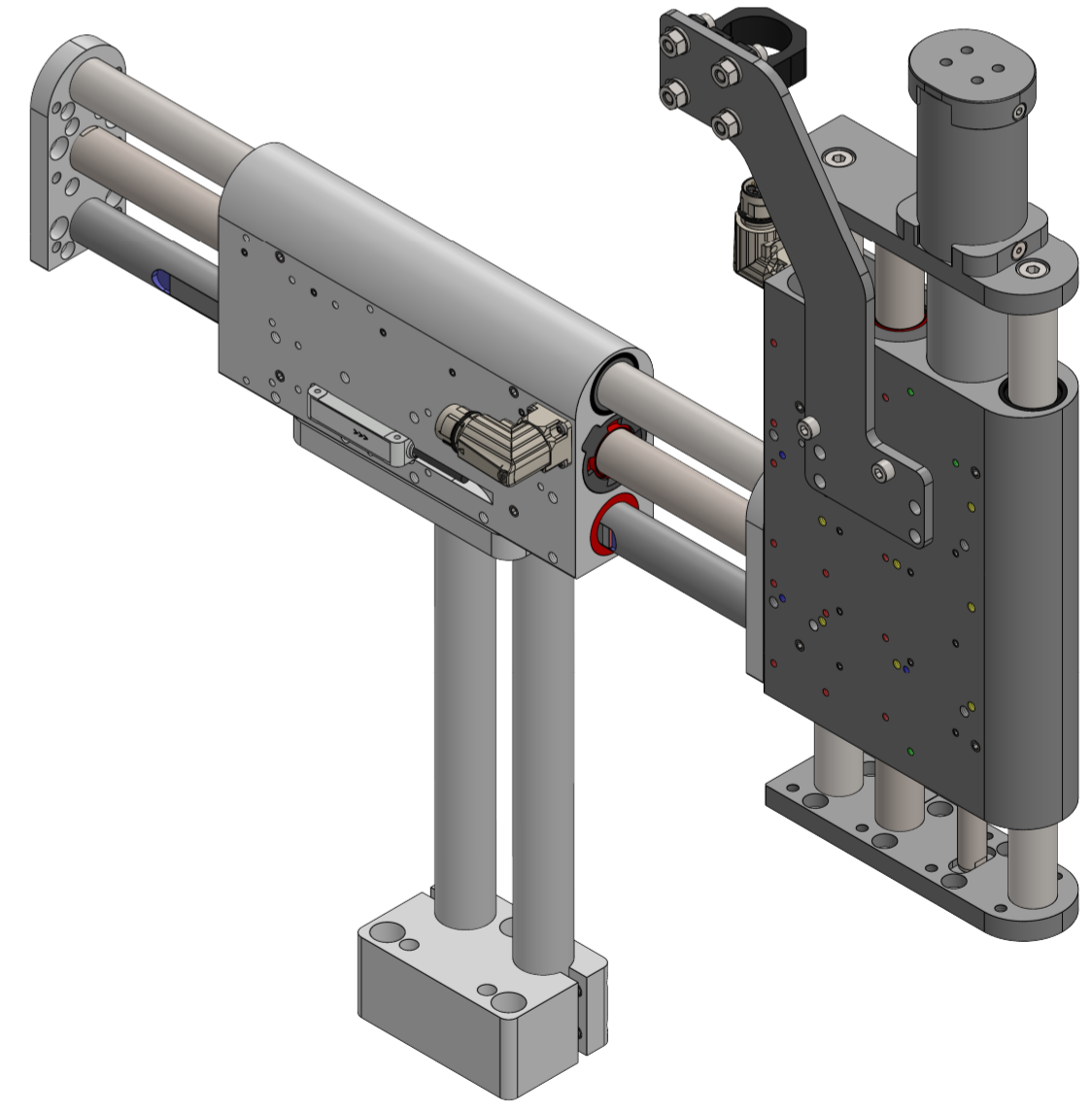
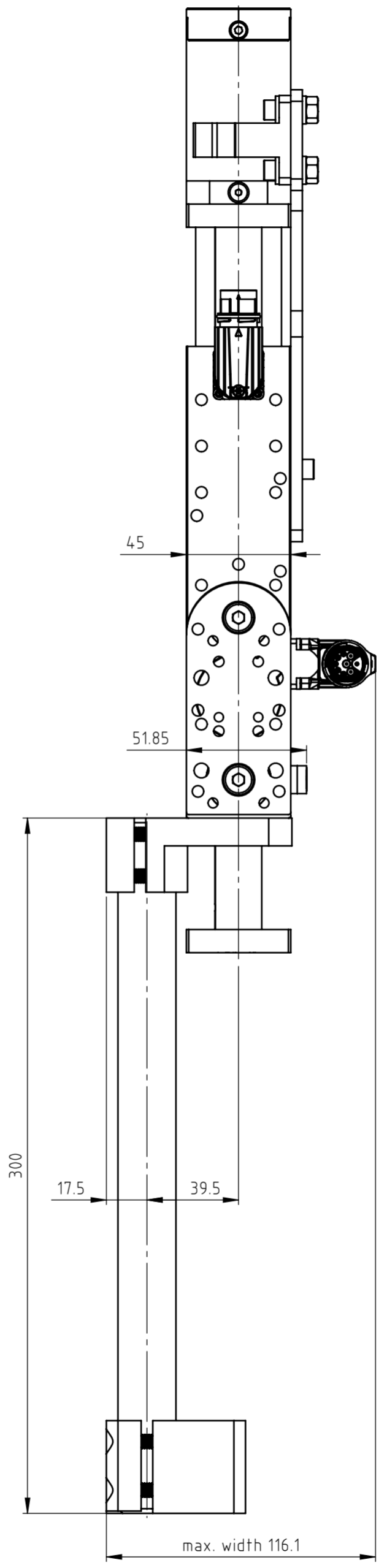
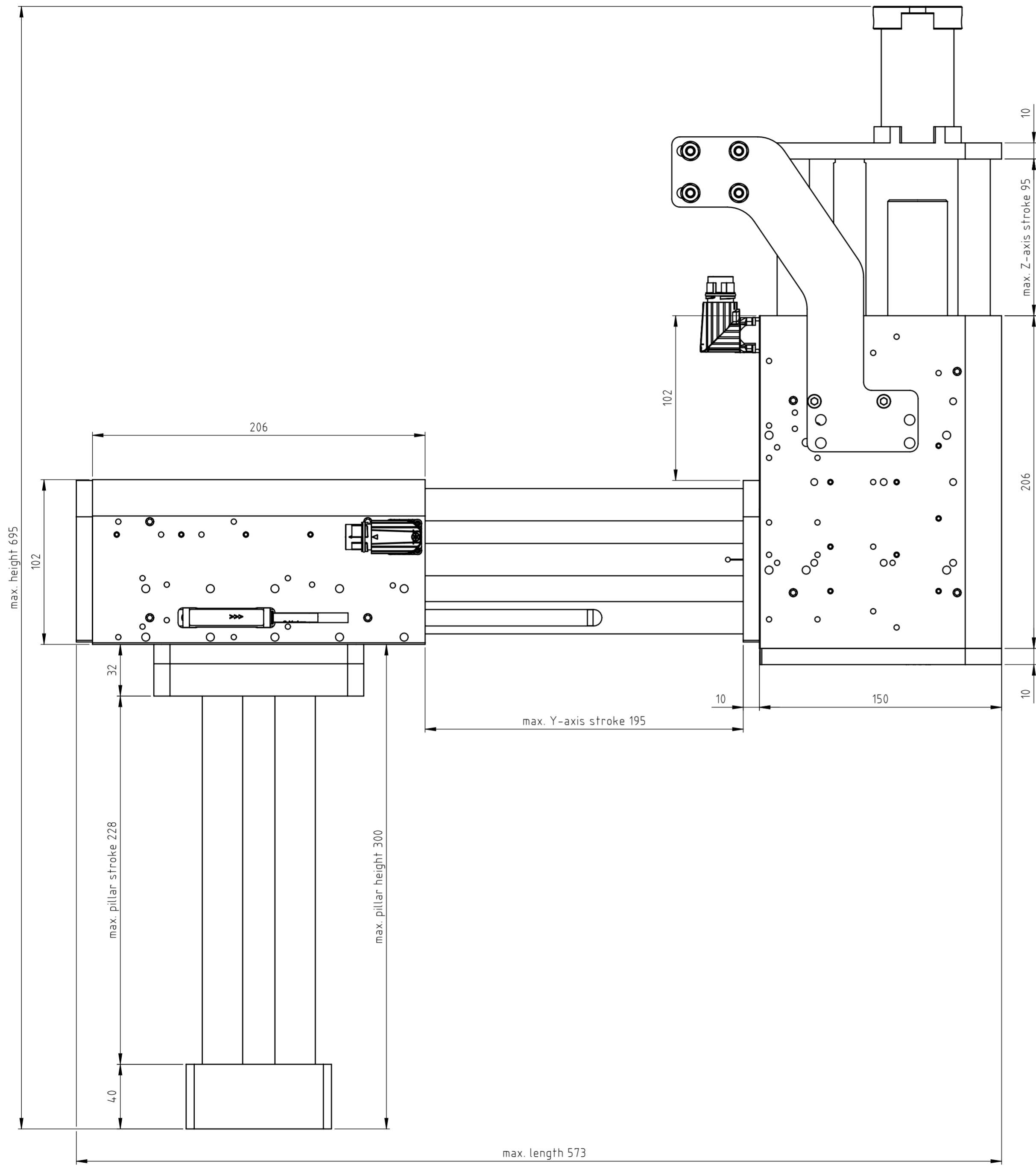


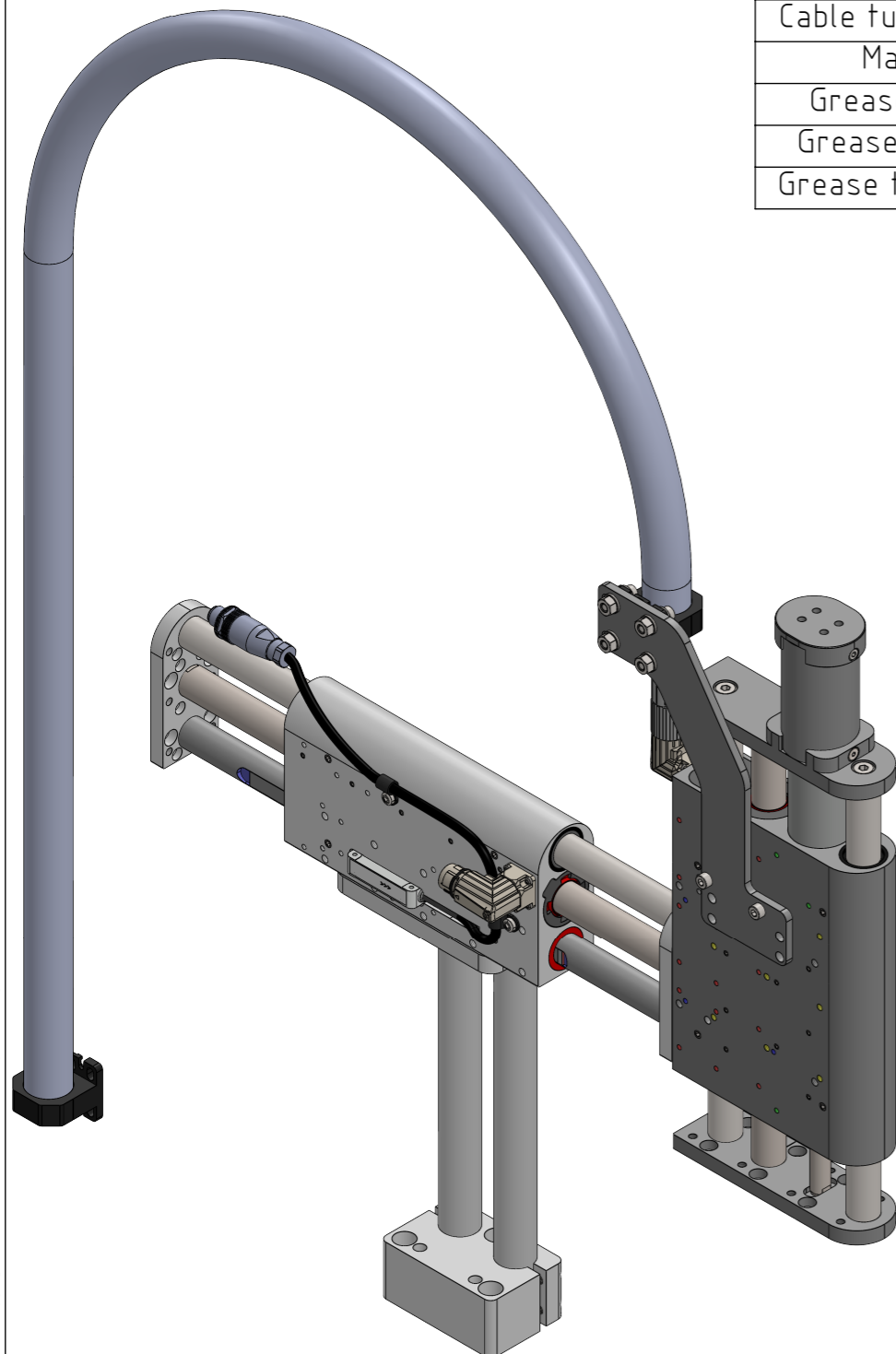
The copyright to this document, which is personally entrusted to the recipient, remains with our company. Without our written permission, the document may not be copied, reproduced, communicated or made accessible to third parties without our written permission.



A	Document created	14.11.2024	JB FH
Rev.	Change	Date	Author Appr.

General tolerance DIN ISO 2768 - mK	Created by J.-E. Beekhuis	Status 06.02.2025/jb	Material
LinMot®	File name 0380-0005_PP03_195-37x120F-EN02_95-37x120F-MS07_PS01_TC01	<input type="checkbox"/> Safety Rel. <input type="checkbox"/> UL-Rel.	Weight (g)
NTI AG LinMot & MagSpring Bodenaeckerstrasse 2 CH-8957 Spreitenbach	Title, additional title PP_DM01-195-MT15-EN02_ DM03-95-MT15-MS07_PS01_TC01 Pick&Place / DM01-37 & DM03-37	Document type Assembly drawing	
Template type: SW2020 Version: V1-1 SW_A2_hori_Sheet_format_V1-1	Art.No.: 0300-0005	Drawing number / Index 0380-0005A	
Scale 1:2	Sheet 1 / 3		A2

The copyright to this document, which is personally entrusted to the recipient, remains with our company. Without our written permission, the document may not be copied nor reproduced nor communicated or made accessible to third parties without our written permission.



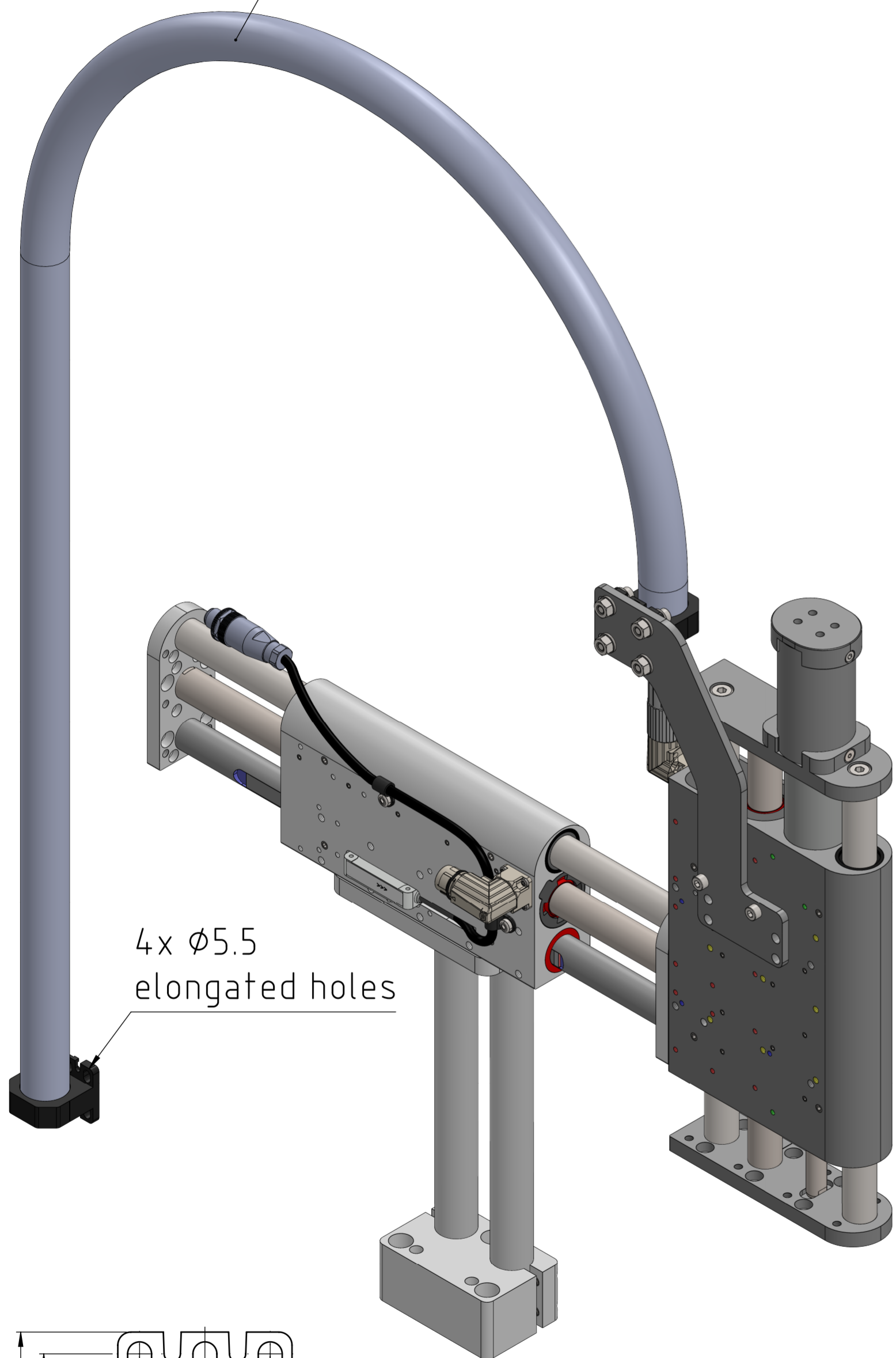
Stage type	PP03_195-37x120F-EN02_95-37x120F-MS07_PS01_TC01	
Motor type	Horizontal: 0150-4014 DM01-37x120F-HP-R-195_EN02	Vertical: 0150-5989 DM03-37x120F-HP-R-95_CS10_MS07
Stroke	195	95
Max. Force@48VDC [N]	255	255
Max. Force@72VDC [N]	255	255
Position resolution [mm]	0.001	0.002
Repeatability [mm]	±0.001	±0.05
Max. acceleration [m/s ²]	< 50	< 50
Max. Velocity@48VDC [m/s]	2.5	2.5
Max. Velocity@72VDC [m/s]	3.8	3.8
Deviation	see datasheet	see datasheet
Moving mass [kg]	2.580	1.970
Module mass [kg]	4.560	5.440
Pillar mass [kg]		3.200
Cable weight [kg/km]		83.0
Cable tube weight [kg/m]		0.84
Max. payload	see datasheet	see datasheet
Grease type - Motor	0150-1954 / 0150-1955 LU02	
Grease type - Bearing	0260-0061 SKF LGFP 2	
Grease type - MagSpring	0150-1954 / 0150-1955 LU02	

Accessories		
Stage type	PP03_195-37x120F-EN02_95-37x120F-MS07_PS01_TC01	
Motor type	Horizontal: 0150-4014 DM01-37x120F-HP-R-195_EN02	Vertical: 0150-5989 DM03-37x120F-HP-R-95_CS10_MS07
Safety	Available: not chosen	Not available
Clean room	Available: not chosen	Not available
External sensor	Chosen: 0150-4717 MS01-1/D-BiSS	Not available
Cover	Not available	Not available
Cable guide	Chosen: TC01	Chosen: TC01
Pillar system	0150-4058 Z01-SB-25x2 0150-4025 Z01-SL-25x300 0150-4059 Z01-SA-25x2	Not available
Force sensor	Available: not chosen	Available: not chosen
Fan Kit	Available: not chosen	Not available

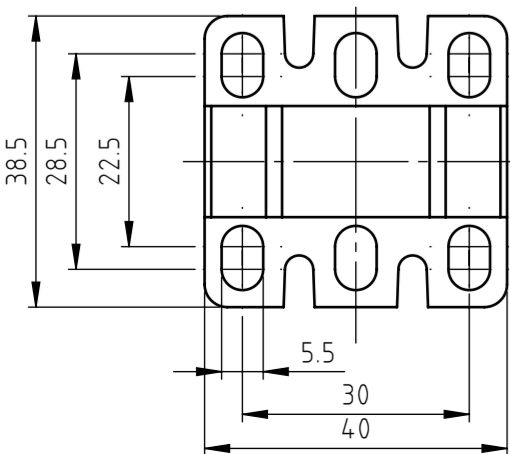
Rev.	Change	Date	Author	Appr.
A	Document created	14.11.2024	JB	FH

General tolerance DIN ISO 2768 - mK	Created by J.-E. Beekhuis	Status 06.02.2025/jb	Material
LinMot®	0380-0005_PP03_195-37x120F-EN02_95-37x120F-MS07_PS01_TC01		<input type="checkbox"/> Safety Rel. Weight (g) <input type="checkbox"/> UL-Rel.
NTI AG LinMot & MagSpring Bodenaeckerstrasse 2 CH-8957 Spreitenbach	Title, additional title PP03_195-37x120F-EN02_95-37x120F-MS07_PS01_TC01 Pick&Place / DM01-37 & DM03-37 Art.No.: 0300-0005		Document type Assembly drawing Drawing number / Index 0380-0005A
Template type: SW2020 Version: V1-1 SW_A3_hori_Sheet_format_V1-1	Scale 1:4		Sheet 2 / 3 A3

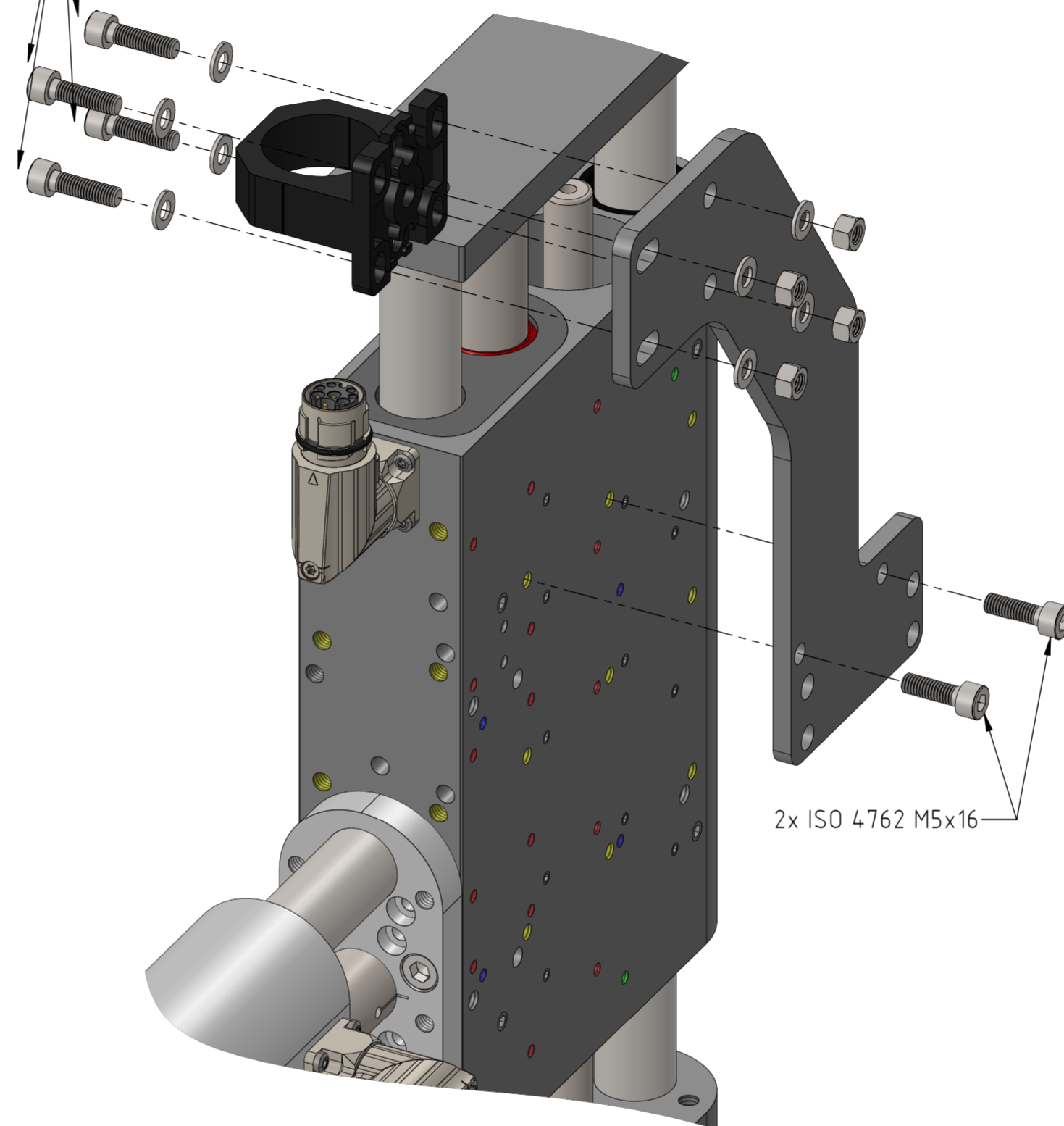
TC01: 1m cable tube
45mm minimum bending radius, static



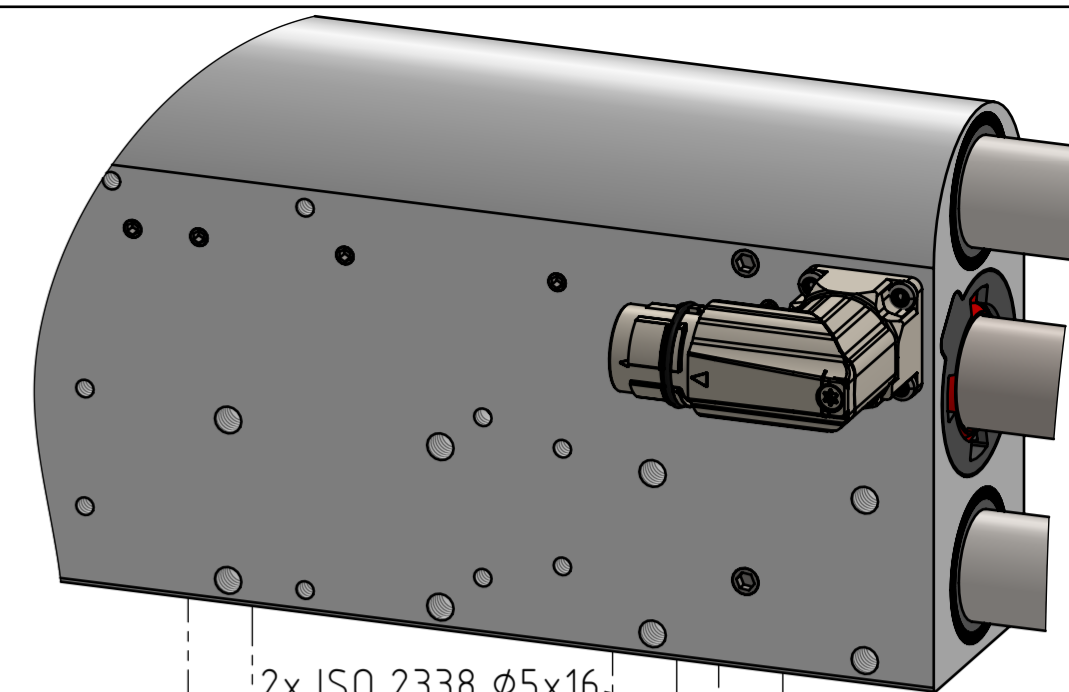
4x $\phi 5.5$
elongated holes



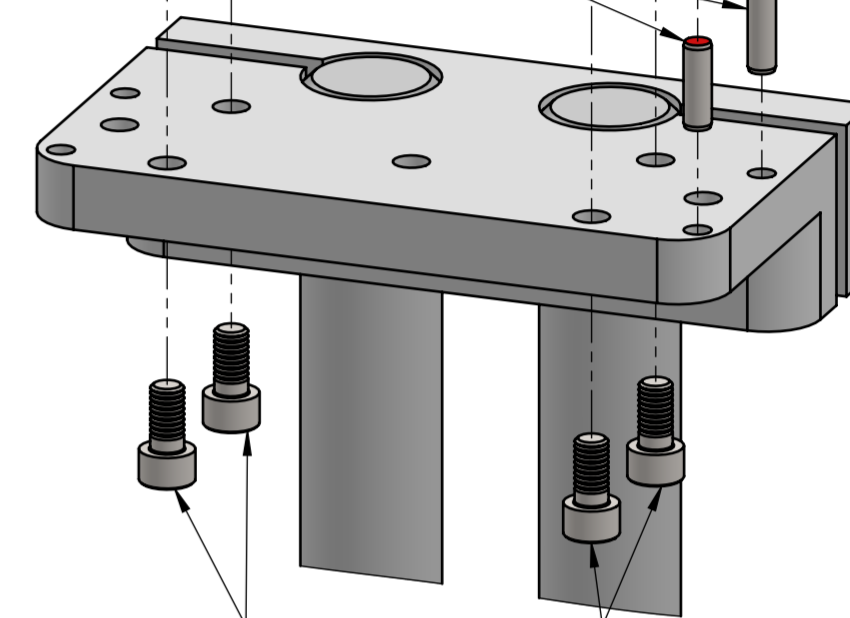
4x ISO 4762 M5x18
8x ISO 7089 $\phi 5.3$
4x ISO 7041 M5



2x ISO 4762 M5x16



2x ISO 2338 $\phi 5 \times 16$



4x ISO 4762 M6x12

2x ISO 2338 $\phi 5 \times 14$

4x ISO 4762 M6x16

A	Document created	14.11.2024	JB	FH
Rev.	Change	Date	Author	Appr.

General tolerance DIN ISO 2768 - mK	Created by J.-E. Beekhuis	Status 06.02.2025/jb	Material
LinMot®	File name 0380-0005_PP03_195-37x120F-EN02_95-37x120F-MS07_PS01_TC01	<input type="checkbox"/> Safety Rel. <input type="checkbox"/> UL-Rel.	Weight (g)
NTI AG LinMot & MagSpring Bodenaeckerstrasse 2 CH-8957 Spreitenbach	Title, additional title PP03_195-37x120F-EN02_ 95-37x120F-MS07_PS01_TC01 Pick&Place / DM01-37 & DM03-37	Document type Assembly drawing	Drawing number / Index 0380-0005A
Template type: SW2020 Version: V1-1 SW_A2_hori_Sheet_format_V1-1	Art.No.: 0300-0005	Scale 2:5	Sheet 3 / 3 A2

The copyright to this document, which is personally entrusted to the recipient, remains with our company. Without our written permission, the document may not be copied nor reproduced nor communicated or made accessible to third parties without our written permission.