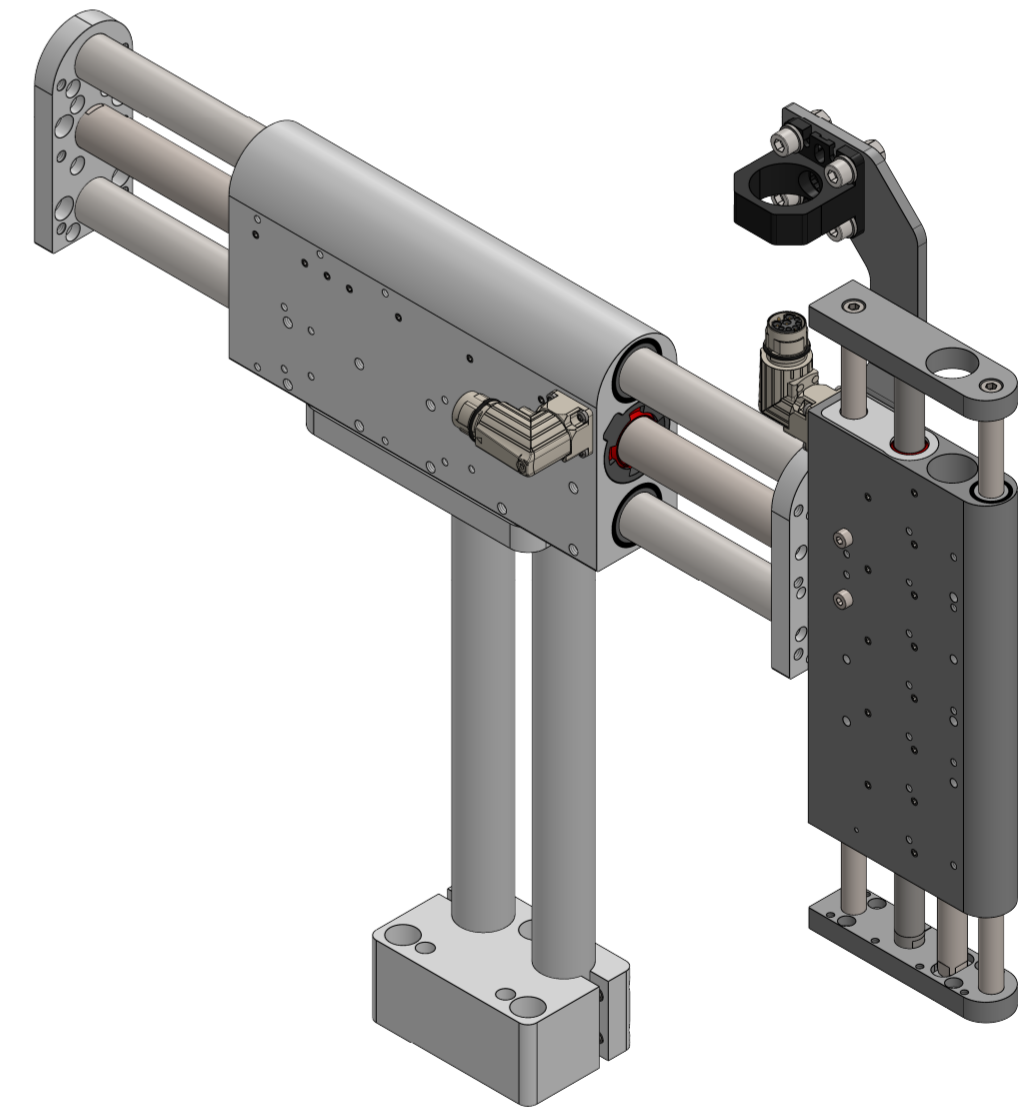
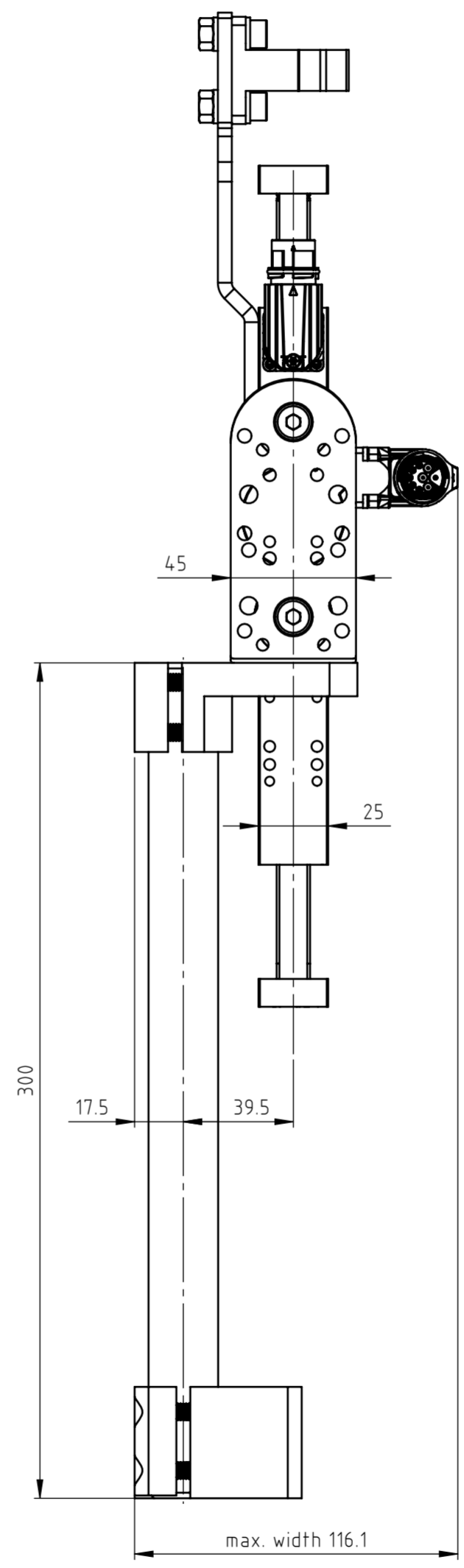
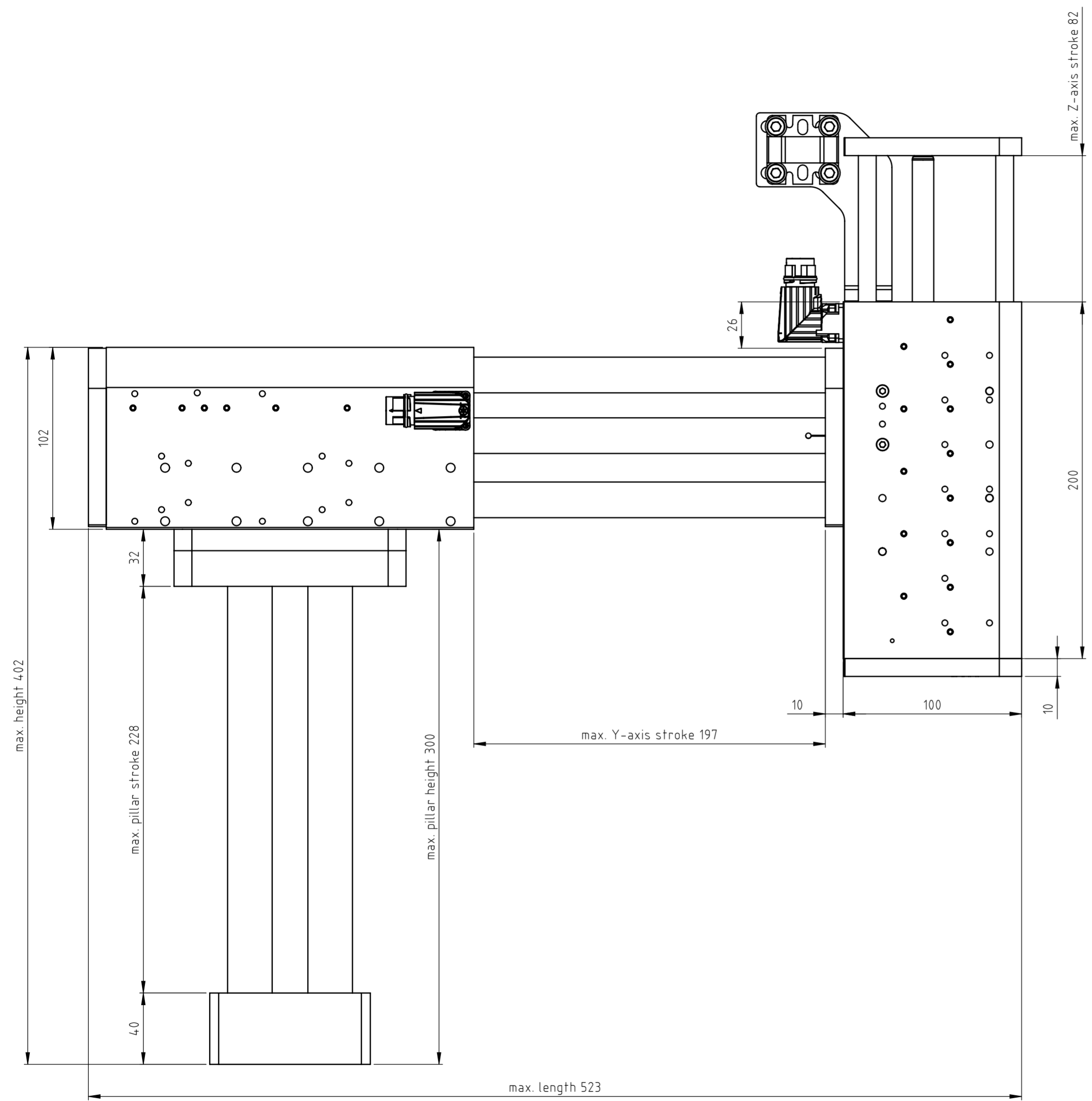


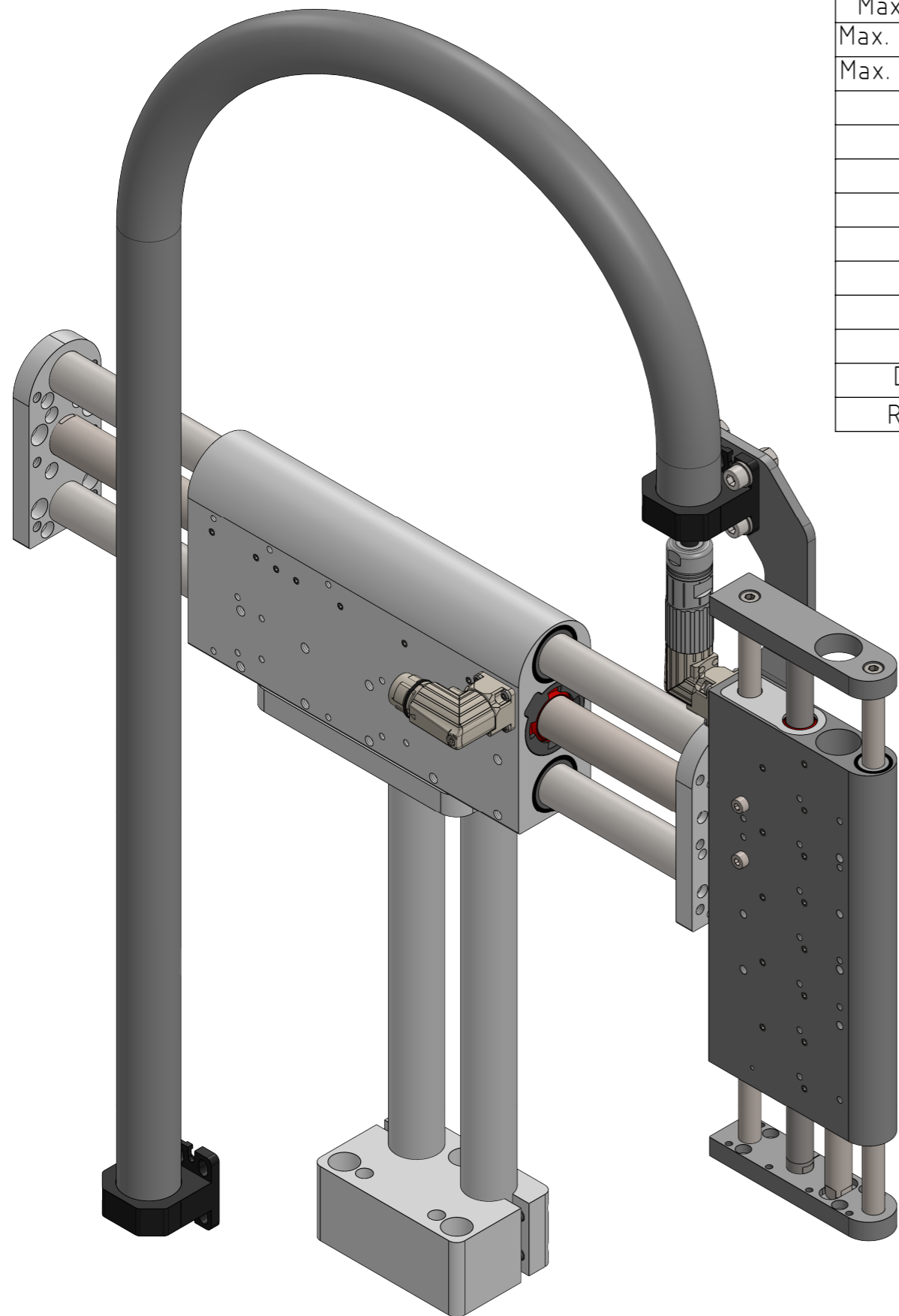
The copyright to this document, which is personally entrusted to the recipient, remains with our company. Without our written permission, the document may not be copied nor reproduced nor communicated or made accessible to third parties without our written permission.



A	Document created	14.11.2024	JB FH
Rev.	Change	Date	Author Appr.

General tolerance DIN ISO 2768 - mK	Created by J.-E. Beekhuis	Status 13.12.2024 / jb	Material
LinMot®	File name 0380-0004_PP_DM01-195-MT15_DM03-80-MT08-MS11_PS01_TC01	<input type="checkbox"/> Safety Rel. <input type="checkbox"/> UL-Rel.	Weight (g)
NTI AG LinMot & MagSpring Bodenaeckerstrasse 2 CH-8957 Spreitenbach	Title, additional title DM01-195-MT15_ DM03-80-MT08-MS11_PS01_TC01 Pick&Place / DM01-37 & DM03-23	Document type Assembly drawing	Drawing number / Index 0380-0004A
Template type: SW2020 Version: V1-1 SW_A2_hori_Sheet_format_V1-1	Art.No.: 0300-0004	Scale 1:2	Sheet 1 / 3 A2

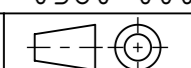
The copyright to this document, which is personally entrusted to the recipient, remains with our company. Without our written permission, the document may not be copied nor reproduced nor communicated or made accessible to third parties without our written permission.



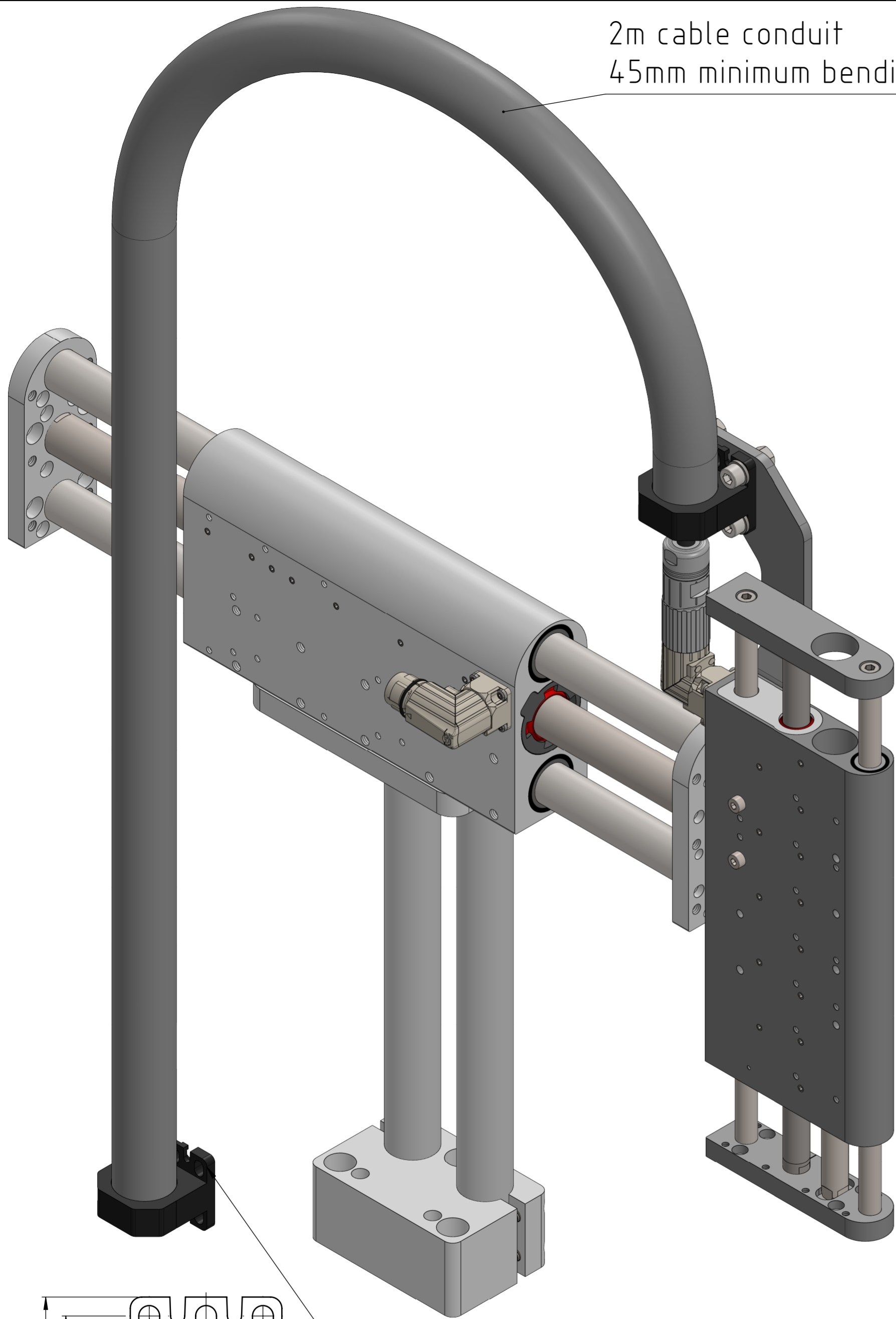
Stage type	PP_DM01-195-MT15_DM03-80-MT08-MS11_PS01_TC01	
Motor type	Horizontal: DM01-37x120F-HP-R-195	Vertical: DM03-23x160H-XP-R-80_CS10_MS11
Stroke	210	80
Max. Force@48VDC [N]	255	137
Max. Force@72VDC [N]	255	137
Position resolution [mm]	0.005	0.002
Repeatability [mm]	±0.05	±0.05
Max. acceleration [m/s ²]	< 50	< 50
Max. Velocity@48VDC [m/s]	2.5	4.9
Max. Velocity@72VDC [m/s]	3.8	7.3
Deviation	see datasheet	see datasheet
Moving part	Hardened steel, hard chrome-plated	Hardened steel, hard chrome-plated
Moving mass [kg]	2.200	0.940
Static part	Anodized aluminum	Anodized aluminum
Static mass [kg]	2.080	1.155
Max. payload	see datasheet	see datasheet
Stage mass [kg]	9.300	
Grease type	SKF LGFP 2	SKF LGFP 2
Drive architecture	Horizontal: Single	Vertical: Single
Recommended drive	C1200	C1200

Accessories		
Stage type	PP_DM01-195-MT15_DM03-80-MT08-MS11_PS01_TC01	
Motor type	Horizontal: DM01-37x120F-HP-R-195	Vertical: DM03-23x160H-XP-R-80_CS10_MS11
Safety	Available: not chosen	Not available
Clean room	Available: not chosen	Not available
External sensor	Available: not chosen	Not available
Cover	Not available	Not available
Cable guide	Chosen: TC01	Chosen: TC01
Pillar system	0150-4058 Z01-SB-25x2 0150-4025 Z01-SL-25x300 0150-4059 Z01-SA-25x2	Not available
Force sensor	Available: not chosen	To be released
Fan Kit	Available: not chosen	Not available

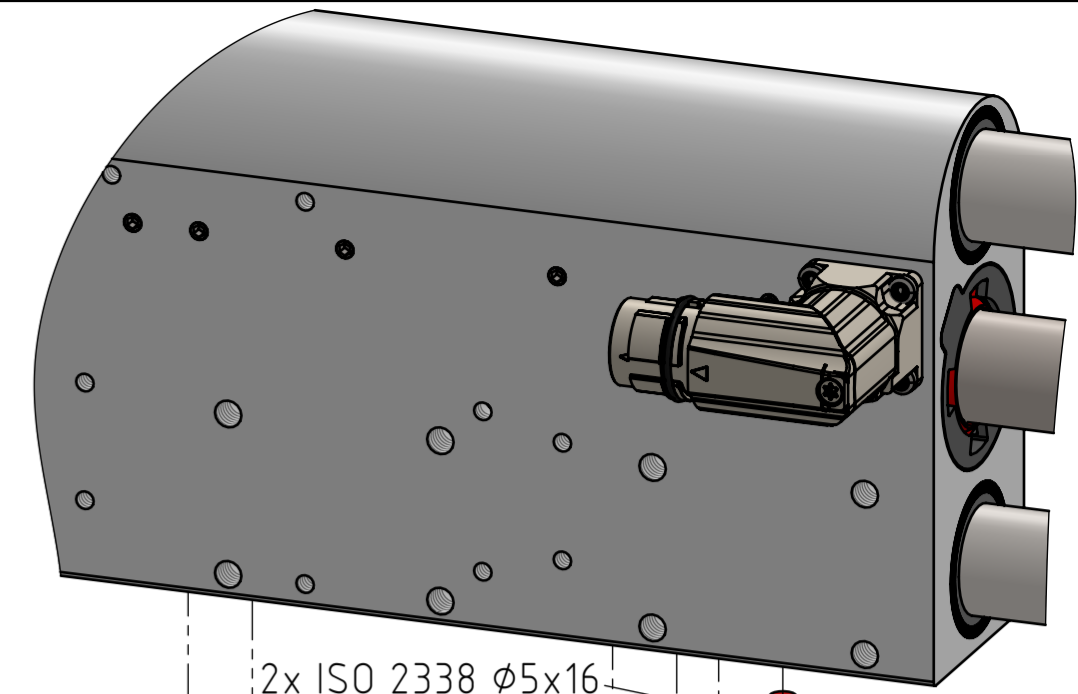
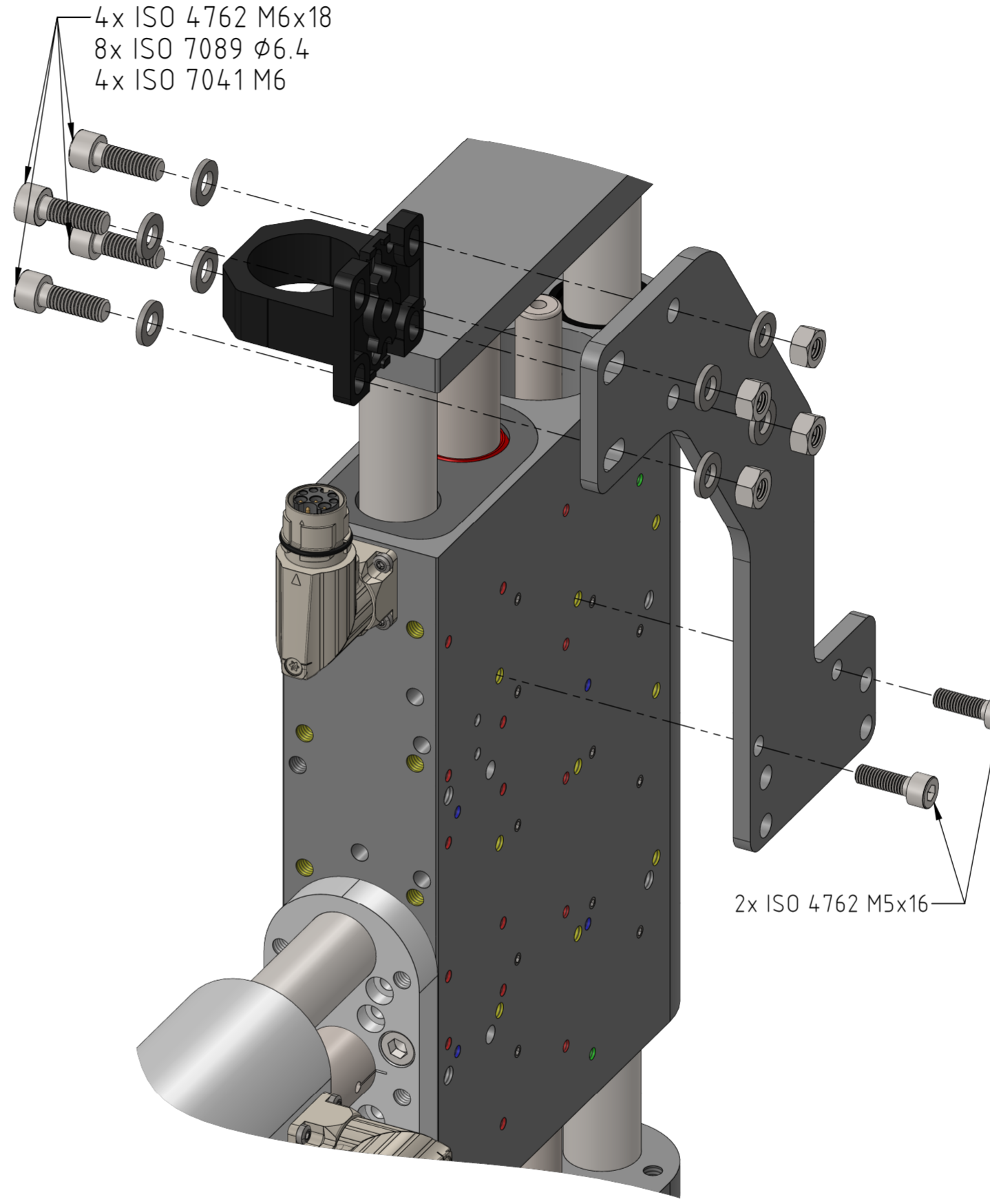
A	Document created	14.11.2024	JB	FH
Rev.	Change	Date	Author	Appr.

General tolerance DIN ISO 2768 - mK	Created by J.-E. Beekhuis	Status 13.12.2024 / jb	Material
LinMot®	0380-0004_PP_DM01-195-MT15_DM03-80-MT08-MS11_PS01_TC01		<input type="checkbox"/> Safety Rel. Weight (g) <input type="checkbox"/> UL-Rel.
NTI AG LinMot & MagSpring Bodenaeckerstrasse 2 CH-8957 Spreitenbach	Title, additional title DM01-195-MT15_ DM03-80-MT08-MS11_PS01_TC01 Pick&Place / DM01-37 & DM03-23		Document type Assembly drawing Drawing number / Index 0380-0004A
Template type: SW2020 Version: V1-1 SW_A3_hori_Sheet_format_V1-1	Art.No.: 0300-0004		Scale 2:5  Sheet 2 / 3 A3

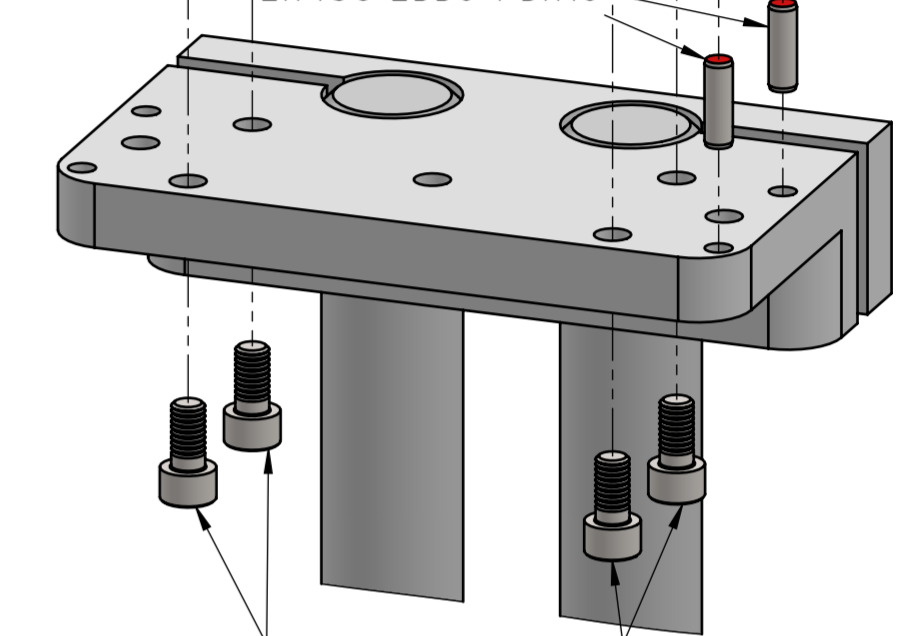
2m cable conduit
45mm minimum bending radius, static



4x ISO 4762 M6x18
8x ISO 7089 Ø6.4
4x ISO 7041 M6



2x ISO 2338 Ø5x16



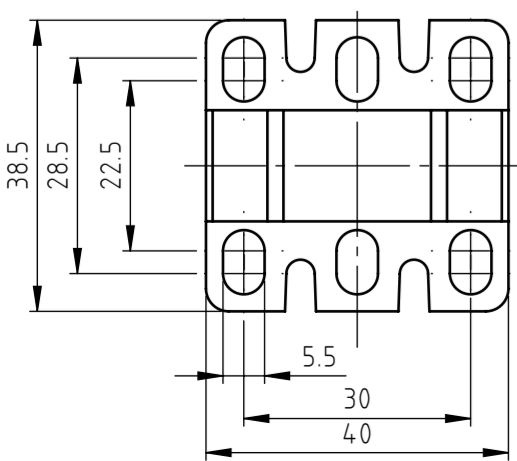
4x ISO 4762 M6x12

2x ISO 4762 M5x16

2x ISO 2338 Ø4x8

4x ISO 4762 M4x14

4x Ø5.5
elongated holes



Rev.	Change	Date	Author	Appr.
A	Document created	14.11.2024	JB	FH

General tolerance DIN ISO 2768 - mK	Created by J.-E. Beekhuis	Status 13.12.2024 / jb	Material
LinMot®	File name 0380-0004_PP_DM01-195-MT15_DM03-80-MT08-MS11_PS01_TC01	Title, additional title DM01-195-MT15_ DM03-80-MT08-MS11_PS01_TC01	<input type="checkbox"/> Safety Rel. <input type="checkbox"/> UL-Rel.
NTI AG LinMot & MagSpring Bodenaeckerstrasse 2 CH-8957 Spreitenbach	Template type: SW2020 Version: V1-1 SW_A2_hori_Sheet_format_V1-1	Pick&Place / DM01-37 & DM03-23 Art.No.: 0300-0004	Document type Assembly drawing Drawing number / Index 0380-0004A
Scale 3:5		Sheet 3 / 3	

The copyright to this document, which is personally entrusted to the recipient, remains with our company. Without our written permission, the document may not be copied nor reproduced nor communicated or made accessible to third parties without our written permission.