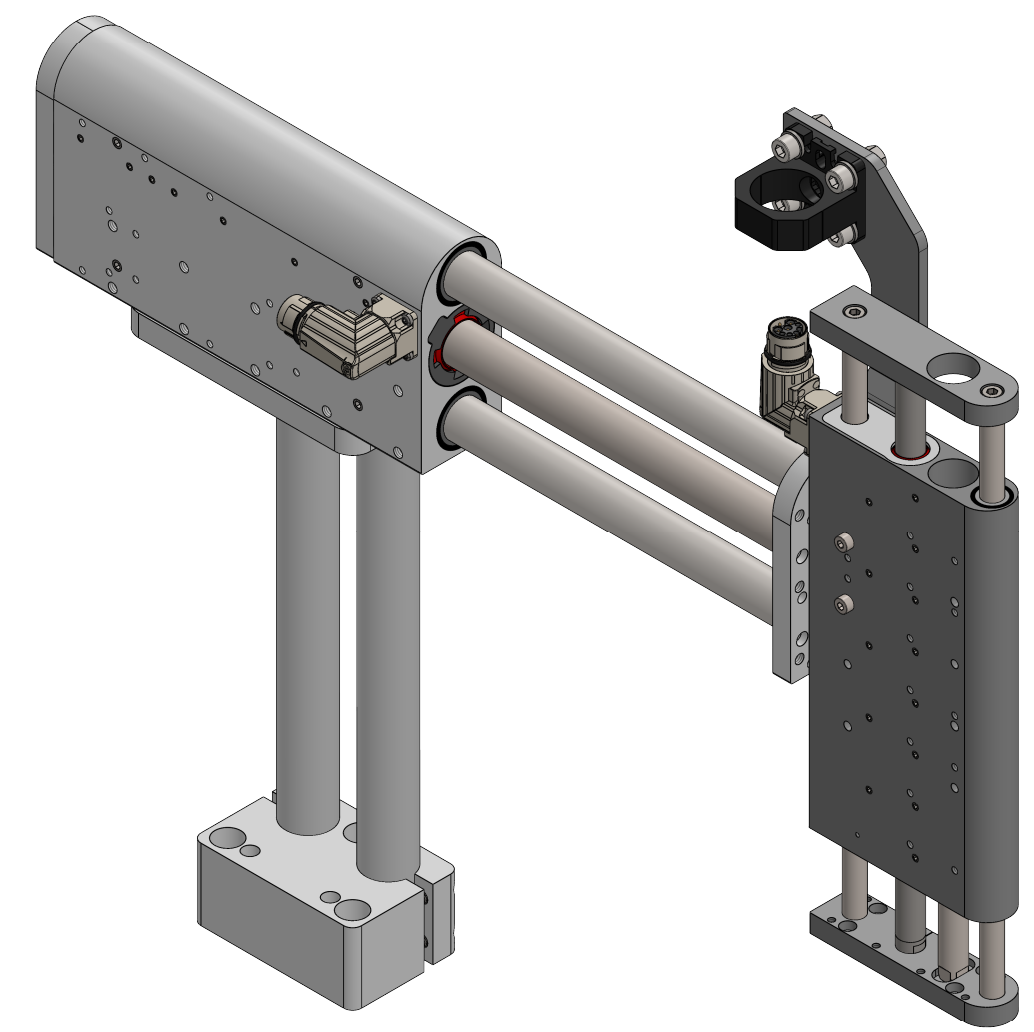
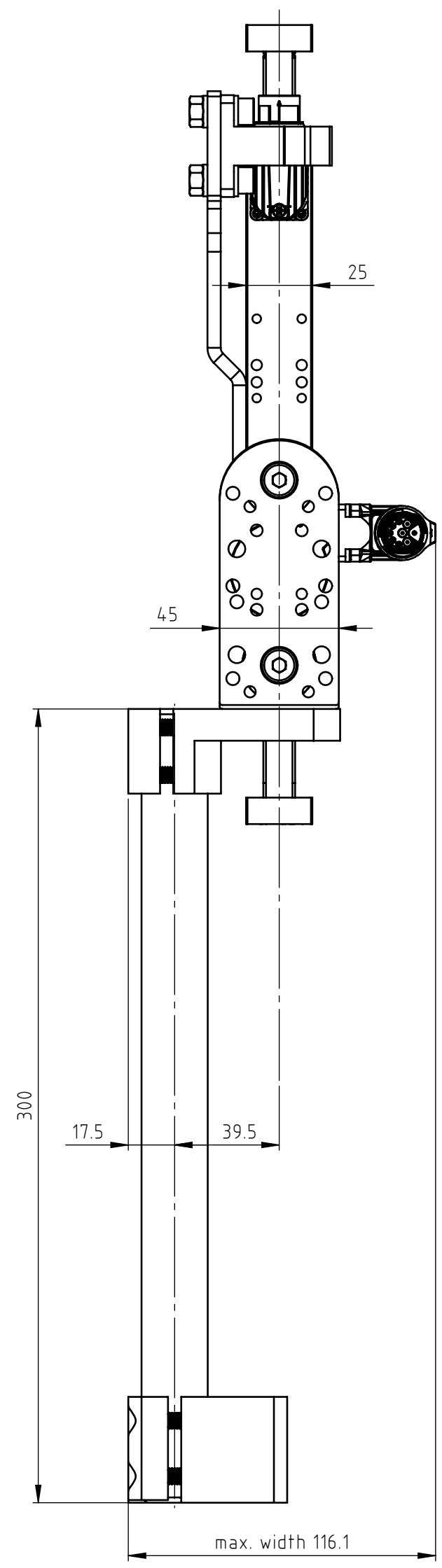
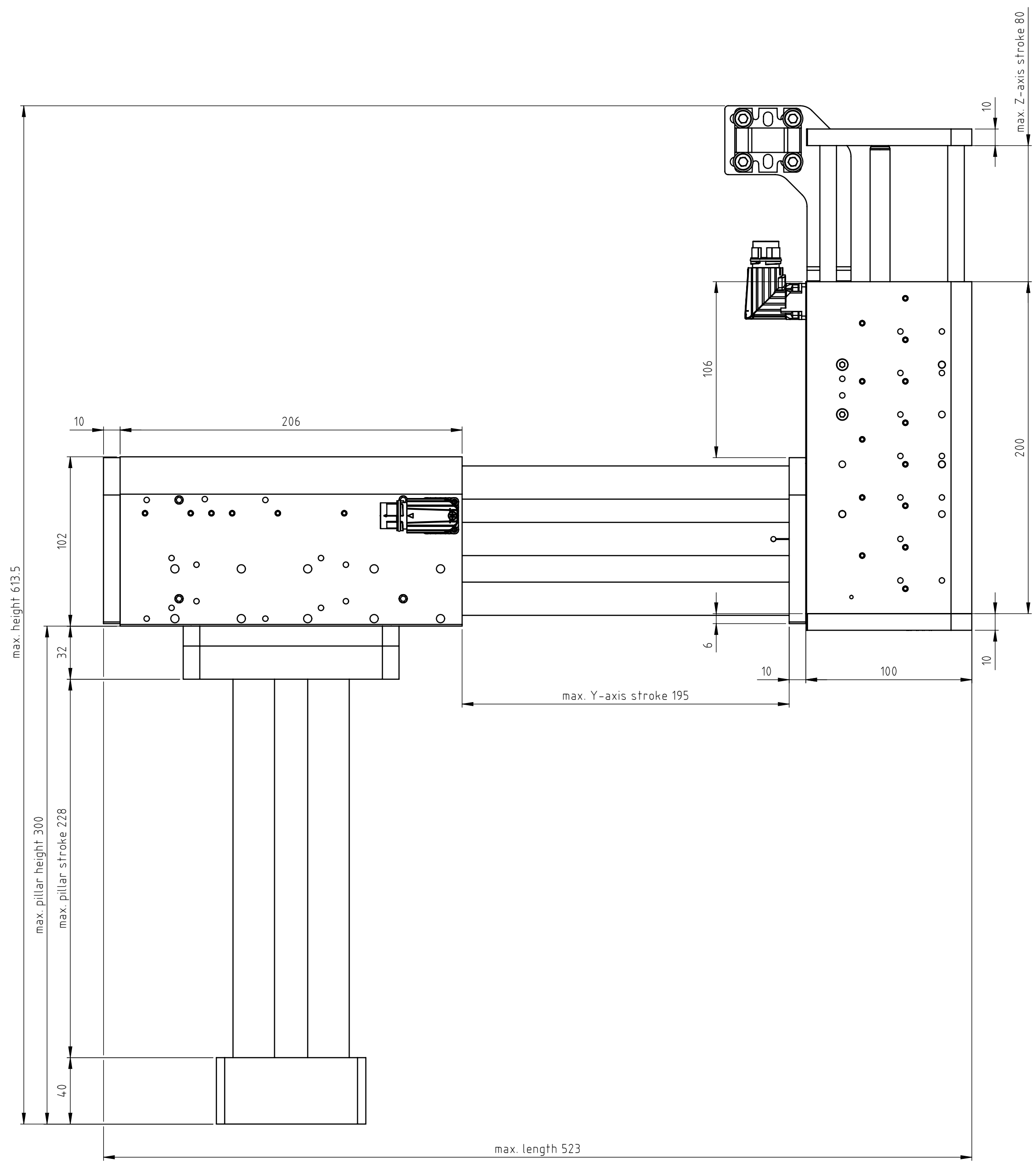


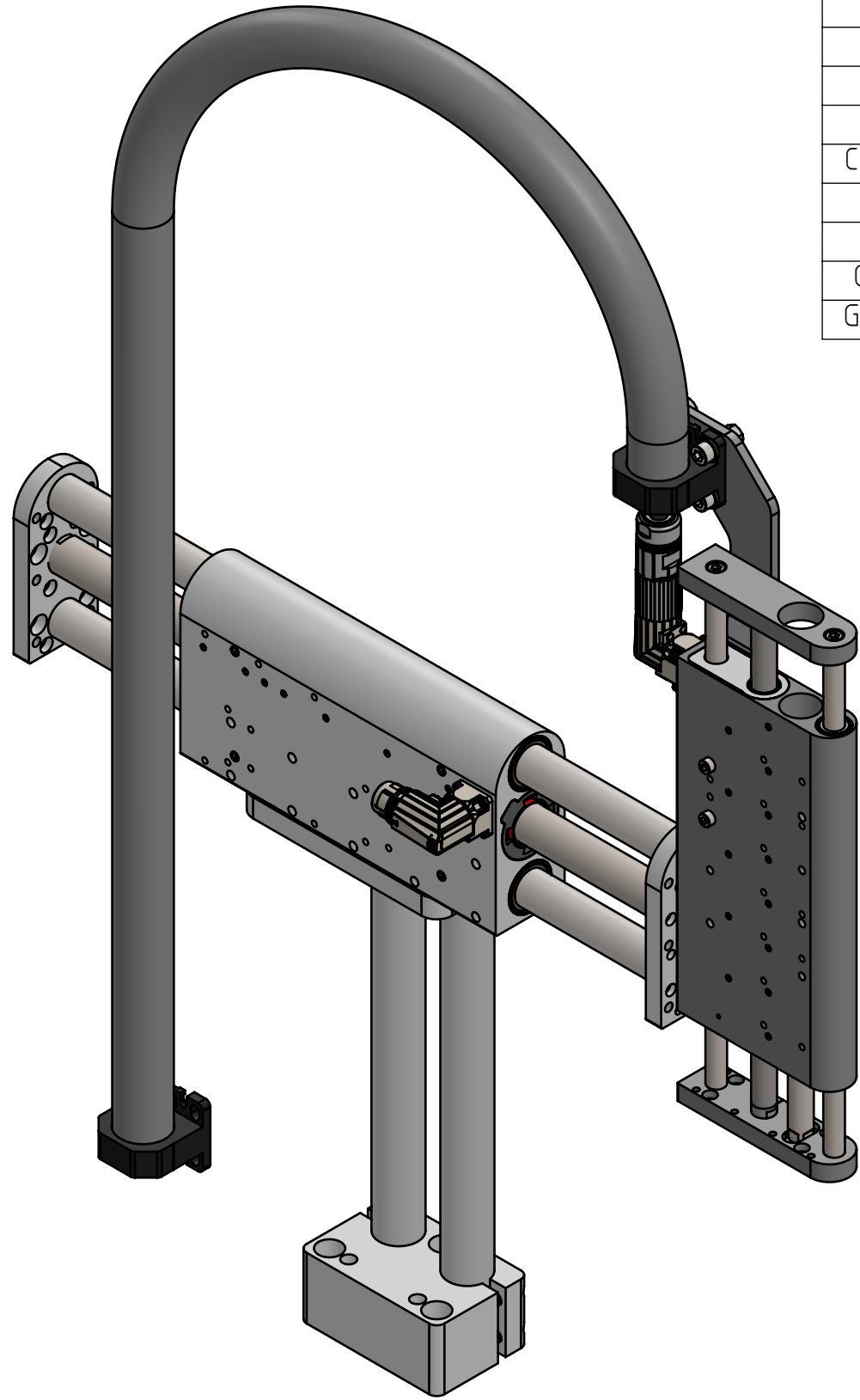
The copyright to this document, which is personally entrusted to the recipient, remains with our company. Without our written permission, the document may not be copied nor reproduced nor communicated or made accessible to third parties without our written permission.



A	Document created	14.11.2024	JB FH
Rev.	Change	Date	Author Appr.

General tolerance DIN ISO 2768 - mK	Created by J.-E. Beekhuis	Status 06.02.2025/jb	Material
LinMot®	File name 0380-0004_PP03_195-37x120F_80-23x160F-MS11_PS01_TC01	<input type="checkbox"/> Safety Rel. <input type="checkbox"/> UL-Rel.	Weight (g)
NTI AG LinMot & MagSpring Bodenaeckerstrasse 2 CH-8957 Spreitenbach	Title, additional title PP03_195-37x120F_ 80-23x160F-MS11_PS01_TC01	Document type Assembly drawing	
Template type: SW2020 Version: V1-1 SW_A2_hori_Sheet_format_V1-1	Pick&Place / DM01-37 & DM03-23	Drawing number / Index 0380-0004A	
Art.No.: 0300-0004	Scale 1:2		Sheet 1 / 3 A2

The copyright to this document, which is personally entrusted to the recipient, remains with our company. Without our written permission, the document may not be copied nor reproduced nor communicated or made accessible to third parties without our written permission.



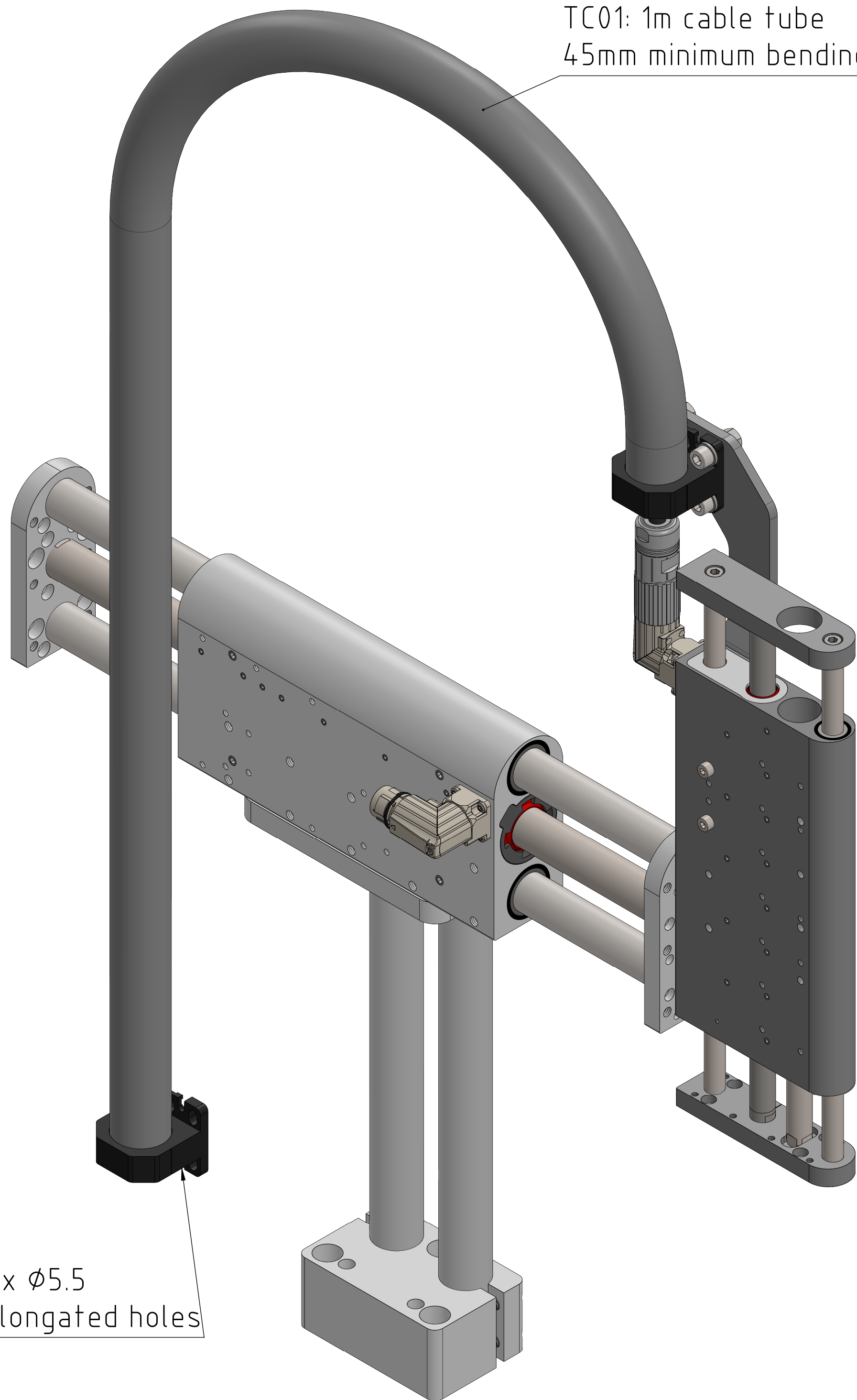
Stage type	PP03_195-37x120F_80-23x160F-MS11_PS01_TC01	
Motor type	Horizontal: 0150-4014 DM01-37x120F-HP-R-195	Vertical: 0150-6109 DM03-23x160H-XP-R-80_CS10_MS11
Stroke	210	80
Max. Force@48VDC [N]	255	137
Max. Force@72VDC [N]	255	137
Position resolution [mm]	0.005	0.002
Repeatability [mm]	±0.05	±0.05
Max. acceleration [m/s ²]	< 50	< 50
Max. Velocity@48VDC [m/s]	2.5	4.9
Max. Velocity@72VDC [m/s]	3.8	7.3
Deviation	see datasheet	see datasheet
Moving mass [kg]	2.200	0.800
Module mass [kg]	4.180	2.140
Pillar mass [kg]		3.200
Cable weight [kg/km]		83.0
Cable tube weight [kg/m]		0.084
Max. payload	see datasheet	see datasheet
Grease type - Motor	0150-1954 / 0150-1955 LU02	
Grease type - Bearings	0260-0061 SKF LGFP 2	
Grease type - MagSpring	0150-1954 / 0150-1955 LU02	

Accessories		
Stage type	PP03_195-37x120F_80-23x160F-MS11_PS01_TC01	
Motor type	Horizontal: 0150-4014 DM01-37x120F-HP-R-195	Vertical: 0150-6109 DM03-23x160H-XP-R-80_CS10_MS11
Safety	Available: not chosen	Not available
Clean room	Available: not chosen	Not available
External sensor	Available: not chosen	Not available
Cover	Not available	Not available
Cable guide	Chosen: TC01	Chosen: TC01
Pillar system	0150-4058 Z01-SB-25x2 0150-4025 Z01-SL-25x300 0150-4059 Z01-SA-25x2	Not available
Force sensor	Available: not chosen	Available: not chosen
Fan Kit	Available: not chosen	Not available

Rev.	Change	Date	Author	Appr.
A	Document created	14.11.2024	JB	FH

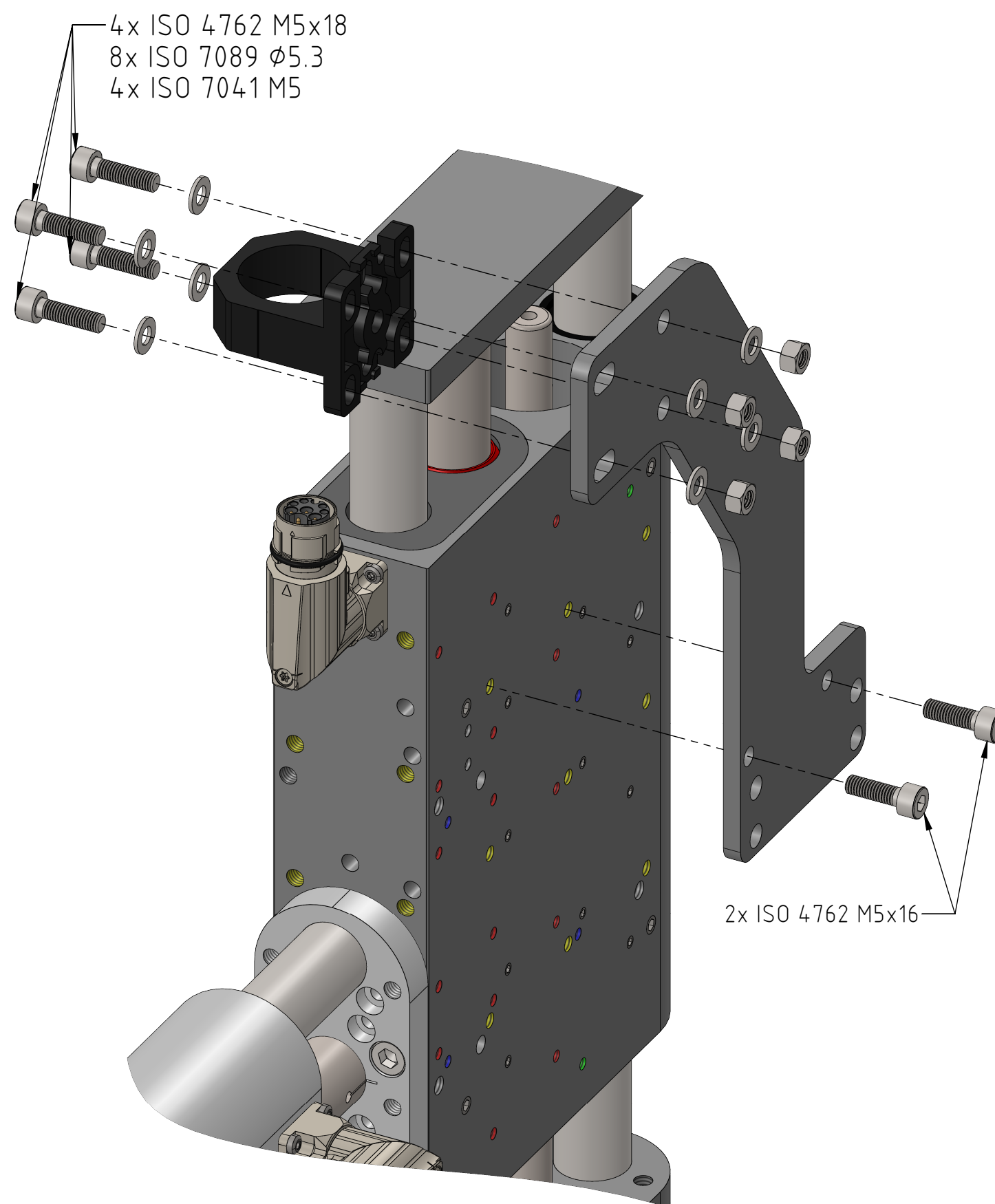
General tolerance DIN ISO 2768 - mK	Created by J.-E. Beekhuis	Status 06.02.2025/jb	Material
LinMot®	0380-0004_PP03_195-37x120F_80-23x160F-MS11_PS01_TC01		<input type="checkbox"/> Safety Rel. Weight (g) <input type="checkbox"/> UL-Rel.
NTI AG LinMot & MagSpring Bodenaeckerstrasse 2 CH-8957 Spreitenbach	Title, additional title PP03_195-37x120F_ 80-23x160F-MS11_PS01_TC01 Pick&Place / DM01-37 & DM03-23 Art.No.: 0300-0004		Document type Assembly drawing Drawing number / Index 0380-0004A
Template type: SW2020 Version: V1-1 SW_A3_hori_Sheet_format_V1-1	Scale 1:3		Sheet 2 / 3 A3

TC01: 1m cable tube
45mm minimum bending radius, static

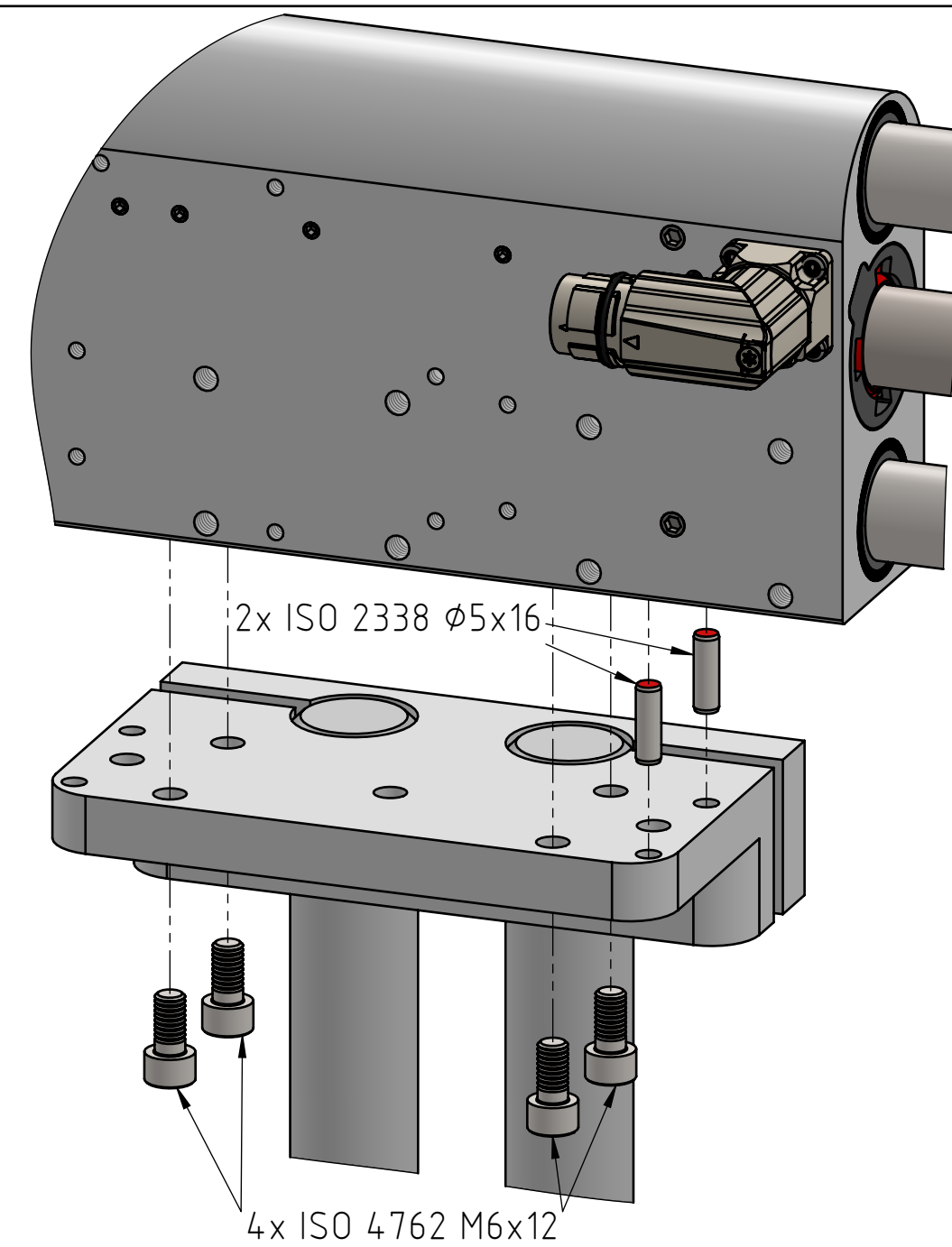


4x $\phi 5.5$
elongated holes

4x ISO 4762 M5x18
8x ISO 7089 $\phi 5.3$
4x ISO 7041 M5

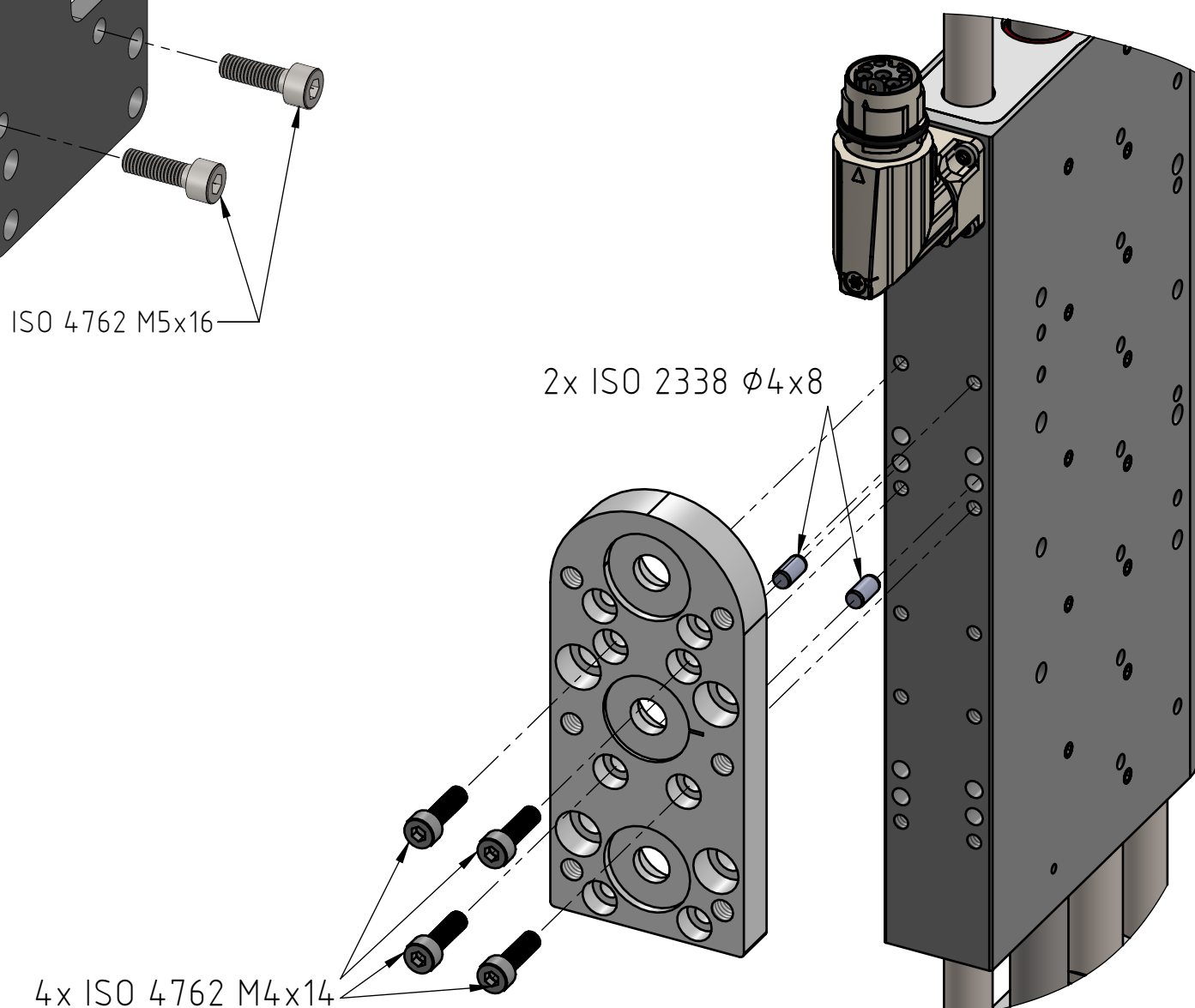


2x ISO 4762 M5x16



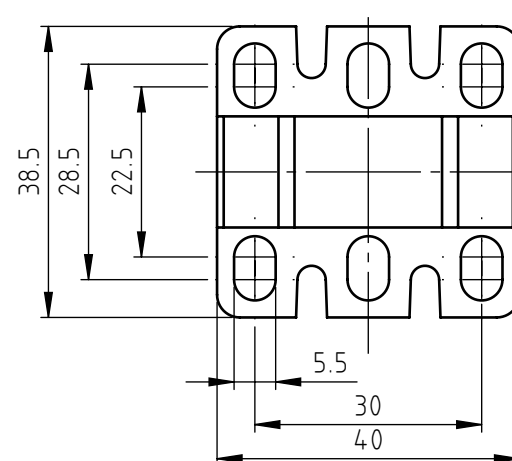
2x ISO 2338 $\phi 5 \times 16$

4x ISO 4762 M6x12



2x ISO 2338 $\phi 4 \times 8$

4x ISO 4762 M4x14



Rev.	Change	Date	Author	Appr.
A	Document created	14.11.2024	JB	FH

General tolerance DIN ISO 2768 - mK	Created by J.-E. Beekhuis	Status 06.02.2025/jb	Material
LinMot®	File name 0380-0004_PP03_195-37x120F_80-23x160F-MS11_PS01_TC01	Title, additional title PP03_195-37x120F_80-23x160F-MS11_PS01_TC01	<input type="checkbox"/> Safety Rel. Weight (g) <input type="checkbox"/> UL-Rel.
NTI AG LinMot & MagSpring Bodenaeckerstrasse 2 CH-8957 Spreitenbach	Template type: SW2020 Version: V1-1 SW_A2_hori_Sheet_format_V1-1	Pick&Place / DM01-37 & DM03-23 Art.No.: 0300-0004	Document type Assembly drawing Drawing number / Index 0380-0004A
		Scale 3:5	Sheet 3 / 3 A2

The copyright to this document, which is personally entrusted to the recipient, remains with our company. Without our written permission, the document may not be copied nor reproduced nor communicated or made accessible to third parties without our written permission.