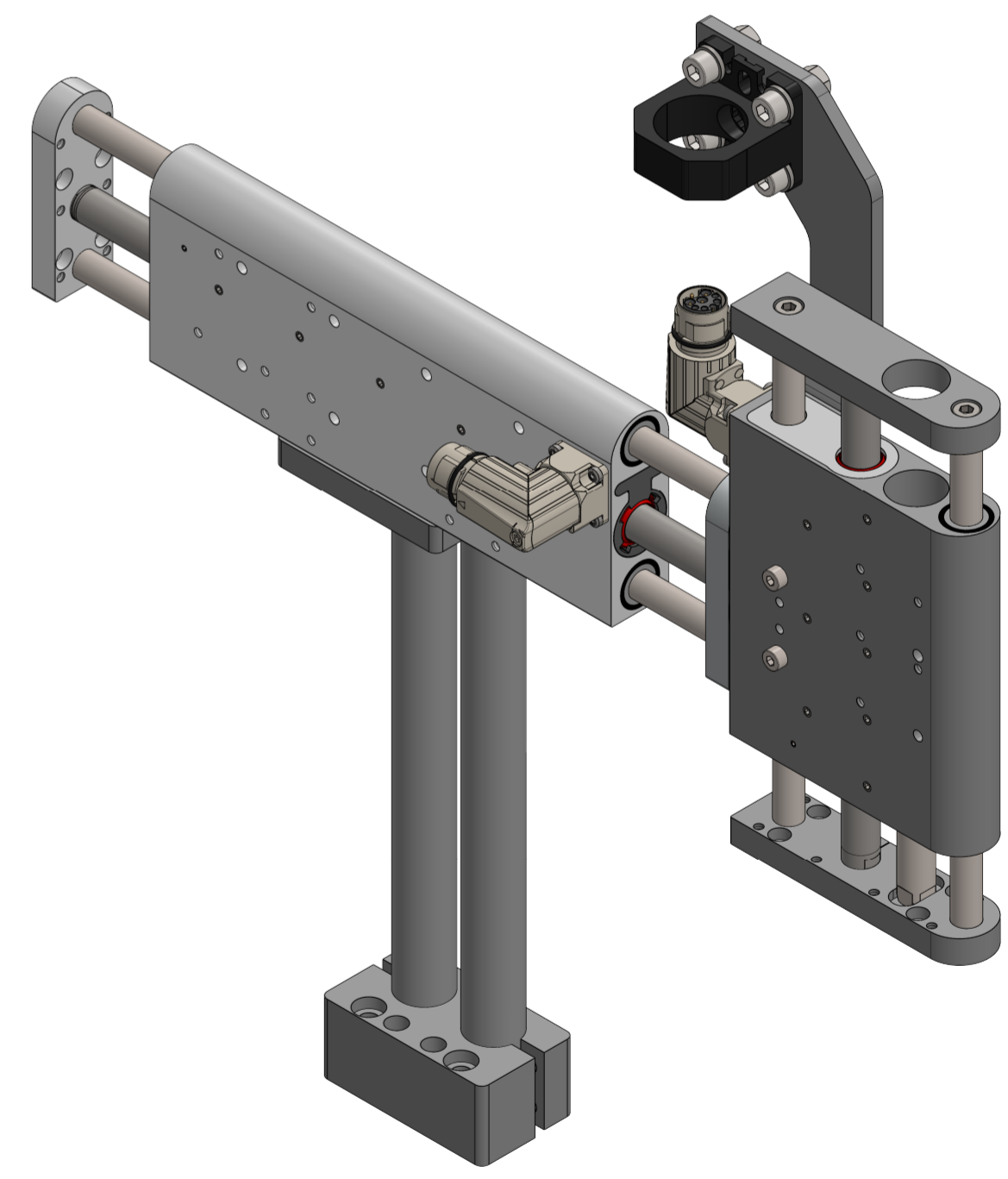
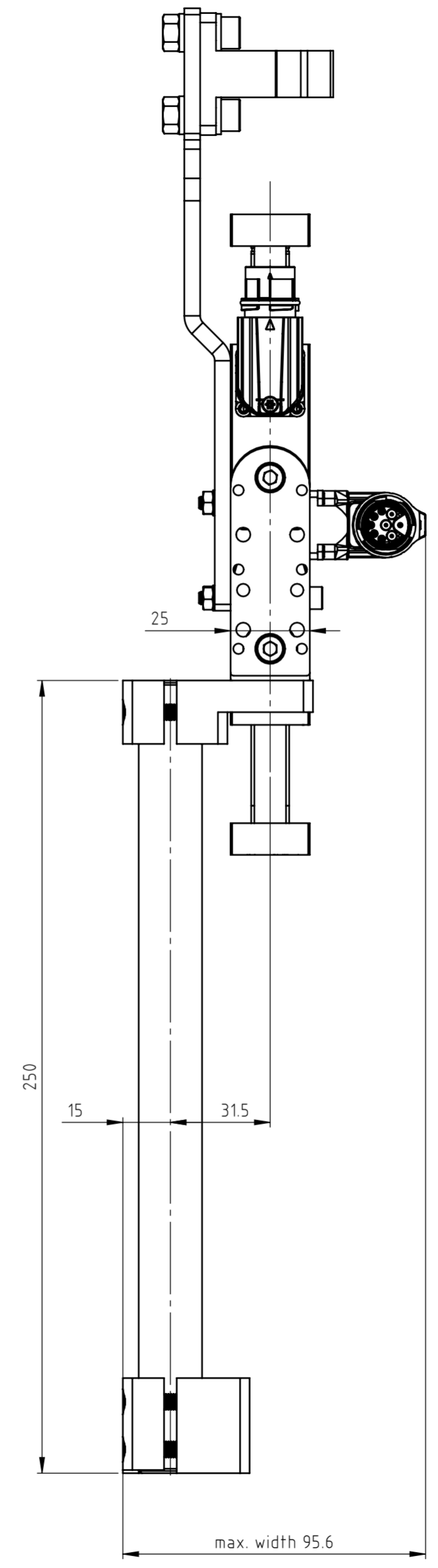
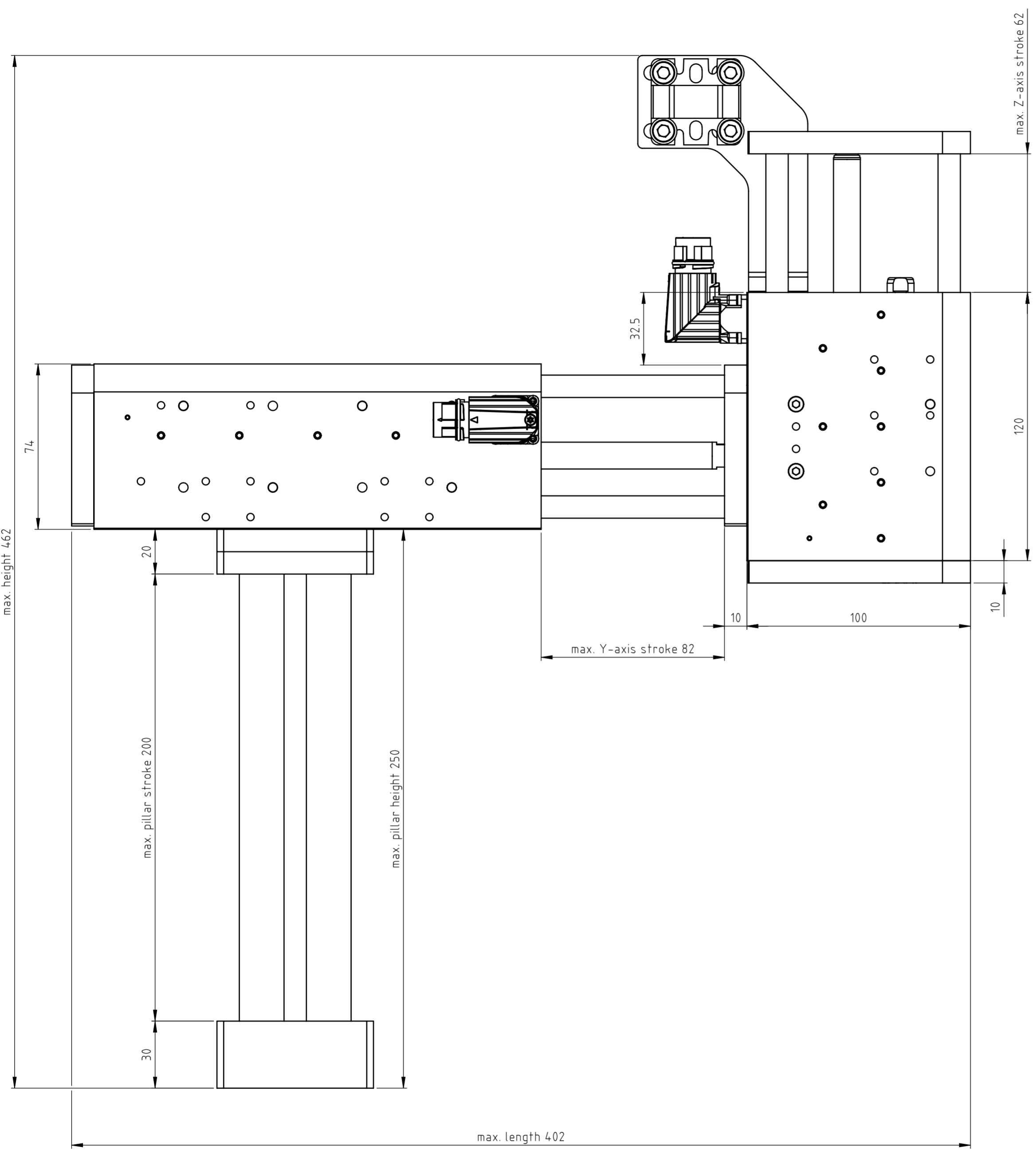


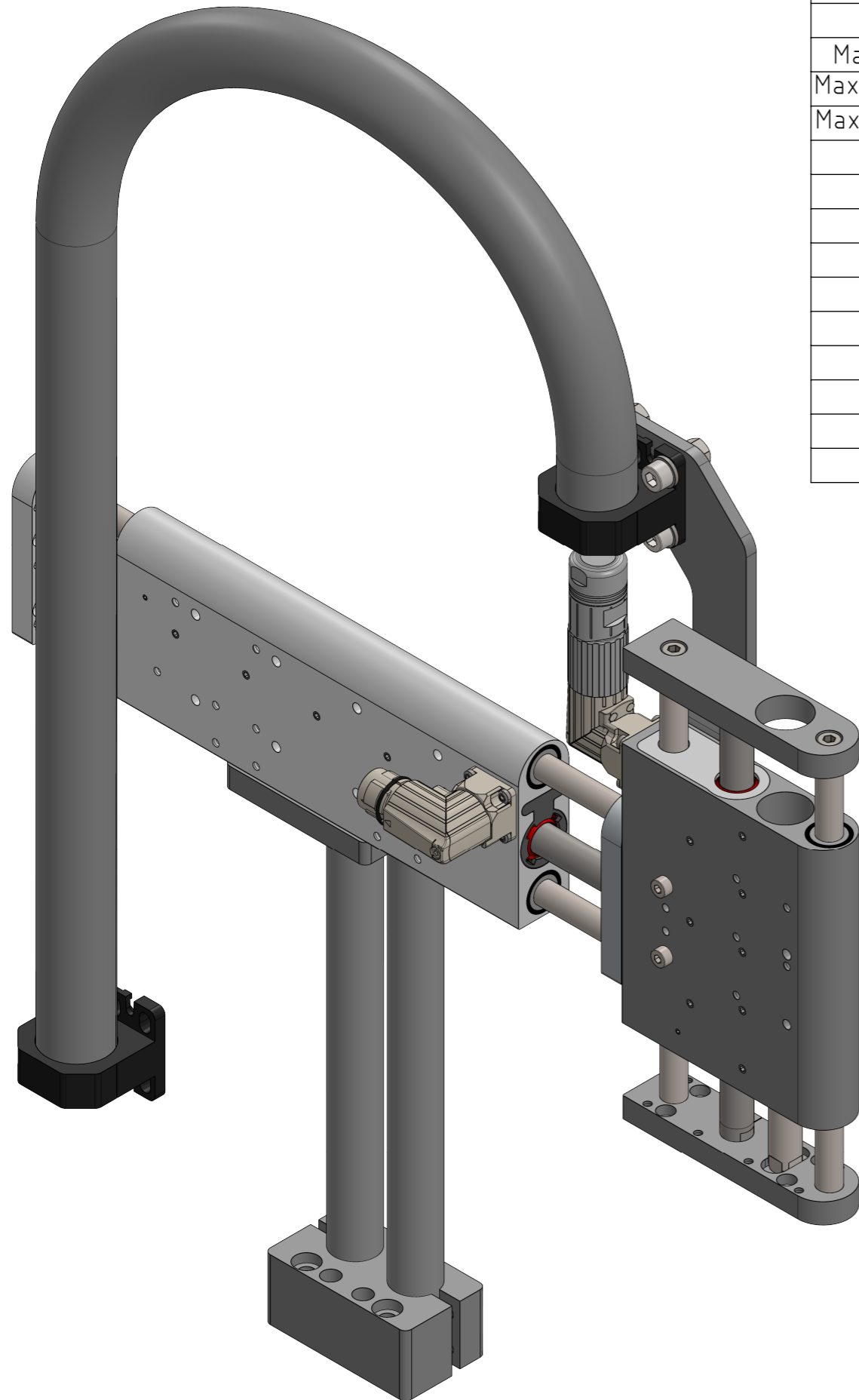
The copyright to this document, which is personally entrusted to the recipient, remains with our company. Without our written permission, the document may not be copied nor reproduced nor communicated or made accessible to third parties without our written permission.



| | | | |
|------|------------------|------------|--------------|
| | | | |
| | | | |
| A | Document created | 13.11.2024 | JB FH |
| Rev. | Change | Date | Author Appr. |

| | | | |
|---|--|--|-------------------|
| General tolerance DIN ISO 2768 - mK | Created by J.-E. Beekhuis | Status 13.12.2024 / jb | Material |
| LinMot® | File name 0380-0002_PP_DM01-80-MT08_DM03-60-MT04-MS11_PS01_TC01 | <input type="checkbox"/> Safety Rel. <input type="checkbox"/> UL-Rel. | Weight (g) |
| NTI AG LinMot & MagSpring Bodenaeckerstrasse 2 CH-8957 Spreitenbach | Title, additional title PP_DM01-80-MT08_ DM03-60-MT04-MS11_PS01_TC01 | Document type Assembly drawing | |
| Template type: SW2020 Version: V1-1 SW_A2_hori_Sheet_format_V1-1 | Pick&Place / DM01-23 & DM03-23 | Drawing number / Index 0380-0002A | |
| Art.No.: 0300-0002 | Scale 2:3 | | Sheet 1 / 3 A2 |

The copyright to this document, which is personally entrusted to the recipient, remains with our company. Without our written permission, the document may not be copied nor reproduced nor communicated or made accessible to third parties without our written permission.



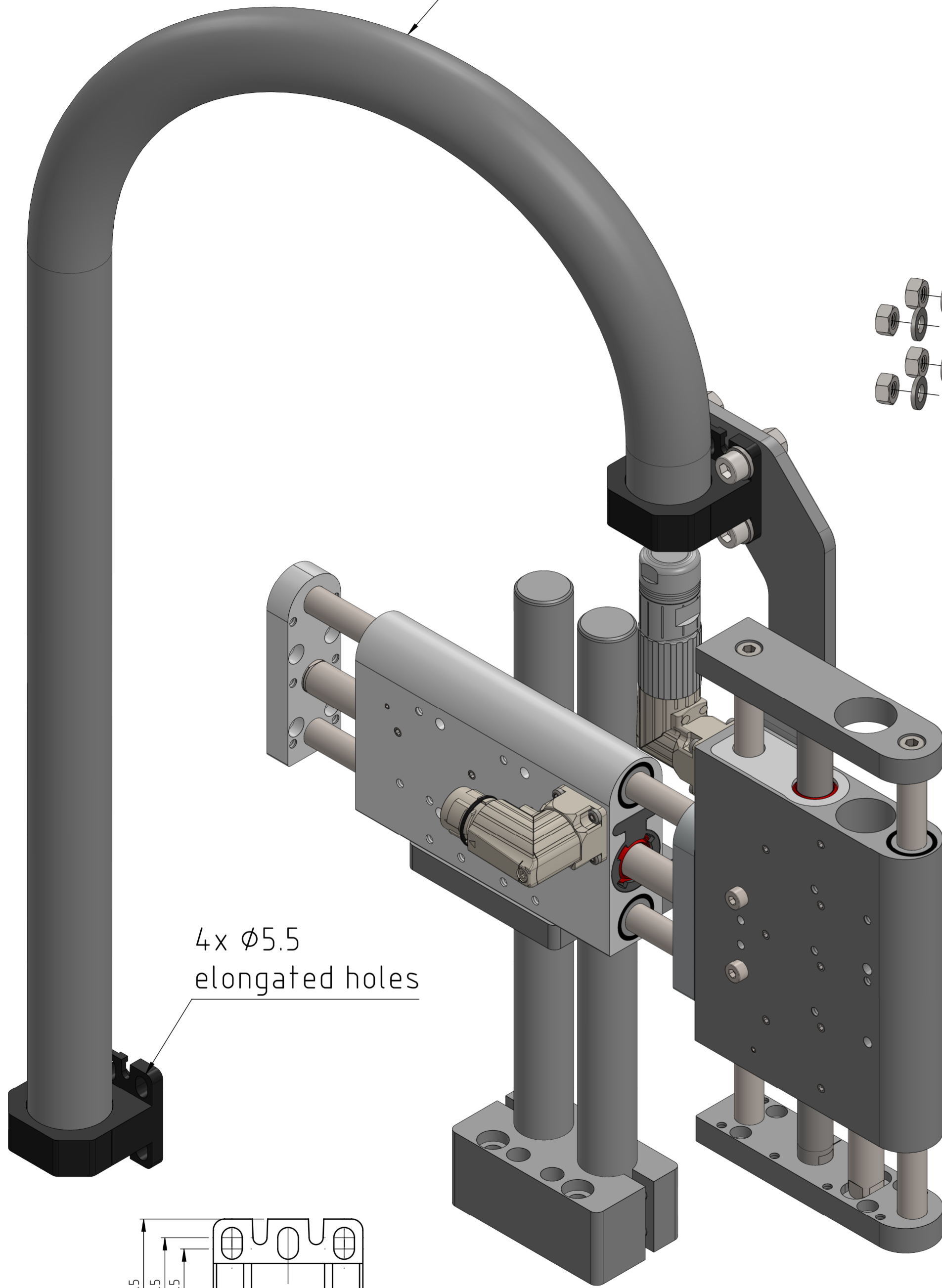
| | | |
|---------------------------------------|---|---|
| Stage type | PP_DM01-80-MT08_DM03-60-MT04-MS11_PS01_TC01 | |
| Motor type | Horizontal: DM01-23x160H-XP-R-80 | Vertical: DM03-23x80F-XP-R-60_CS10_MS11 |
| Stroke | 80 | 60 |
| Max. Force@48VDC [N] | 137 | 73 |
| Max. Force@72VDC [N] | 137 | 73 |
| Position resolution [mm] | 0.002 | 0.002 |
| Repeatability [mm] | ±0.05 | ±0.05 |
| Max. acceleration [m/s ²] | < 50 | < 50 |
| Max. Velocity@48VDC [m/s] | 4.9 | 4.9 |
| Max. Velocity@72VDC [m/s] | 7.3 | 7.3 |
| Deviation | see datasheet | see datasheet |
| Moving part | Hardened steel, hard chrome-plated | Hardened steel, hard chrome-plated |
| Moving mass [kg] | 0.670 | 0.680 |
| Static part | Anodized aluminum | Anodized aluminum |
| Static mass [kg] | 0.960 | 0.800 |
| Max. payload | see datasheet | see datasheet |
| Stage mass [kg] | 4.680 | |
| Grease type | SKF LGFP 2 | SKF LGFP 2 |
| Drive architecture | Horizontal: Single | Vertical: Single |
| Recommended drive | C1200 | C1200 |

| Accessories | | |
|-----------------|---|---|
| Stage type | PP_DM01-80-MT08_DM03-60-MT04-MS11_PS01_TC01 | |
| Motor type | Horizontal: DM01-23x160H-HP-R-80 | Vertical: DM03-23x80F-XP-R-60_CS10_MS11 |
| Safety | Not available | Not available |
| Clean room | Available: not chosen | Not available |
| External sensor | Not available | Not available |
| Cover | Not available | Not available |
| Cable guide | Chosen: TC01 | Chosen: TC01 |
| Pillar system | 0150-6388 Z01-SB-20x2 0150-6386 Z01-SL-20x250 0150-6387 Z01-SA-20x2 | Not available |
| Force sensor | Available: not chosen | To be released |
| Fan Kit | Not available | Not available |

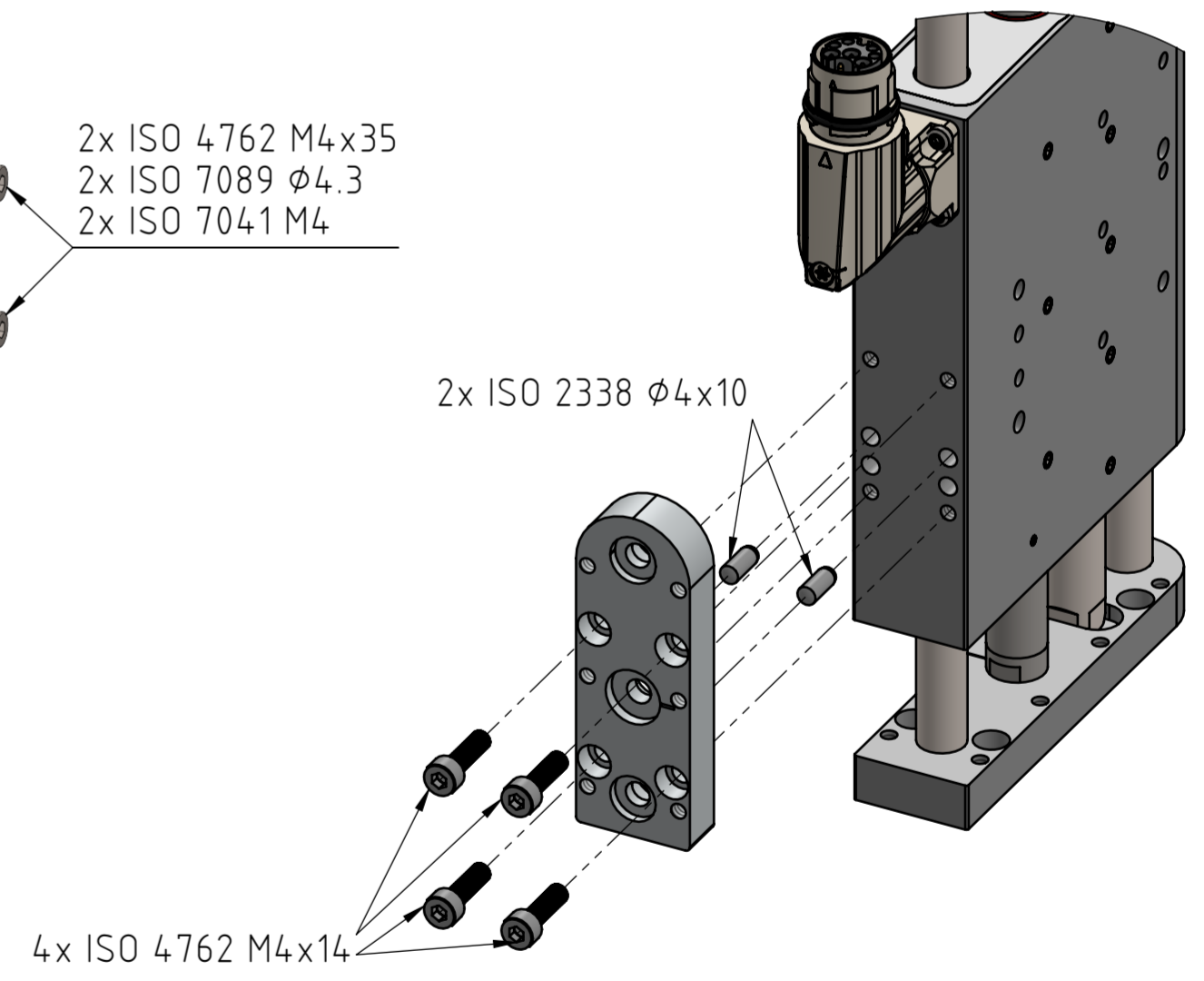
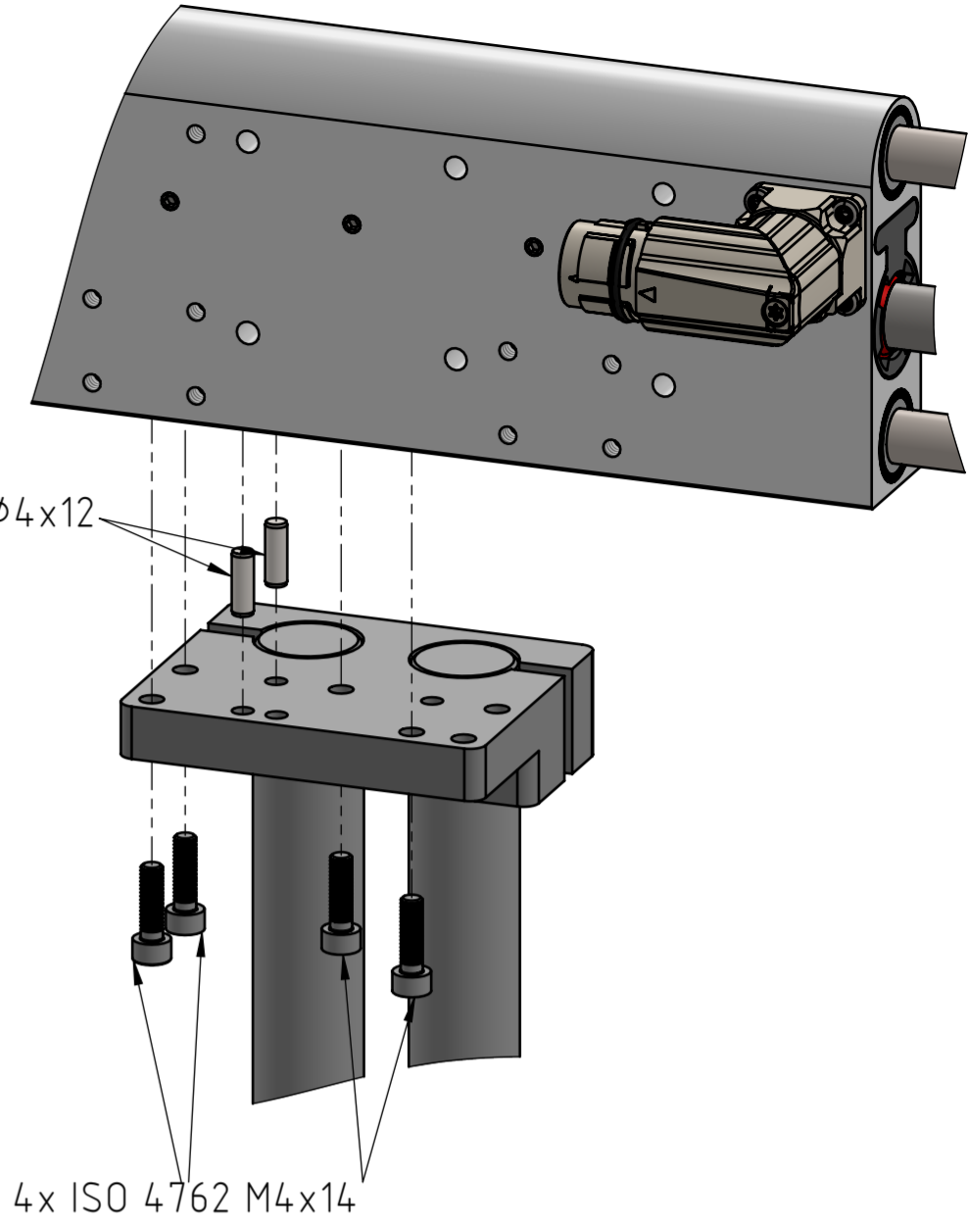
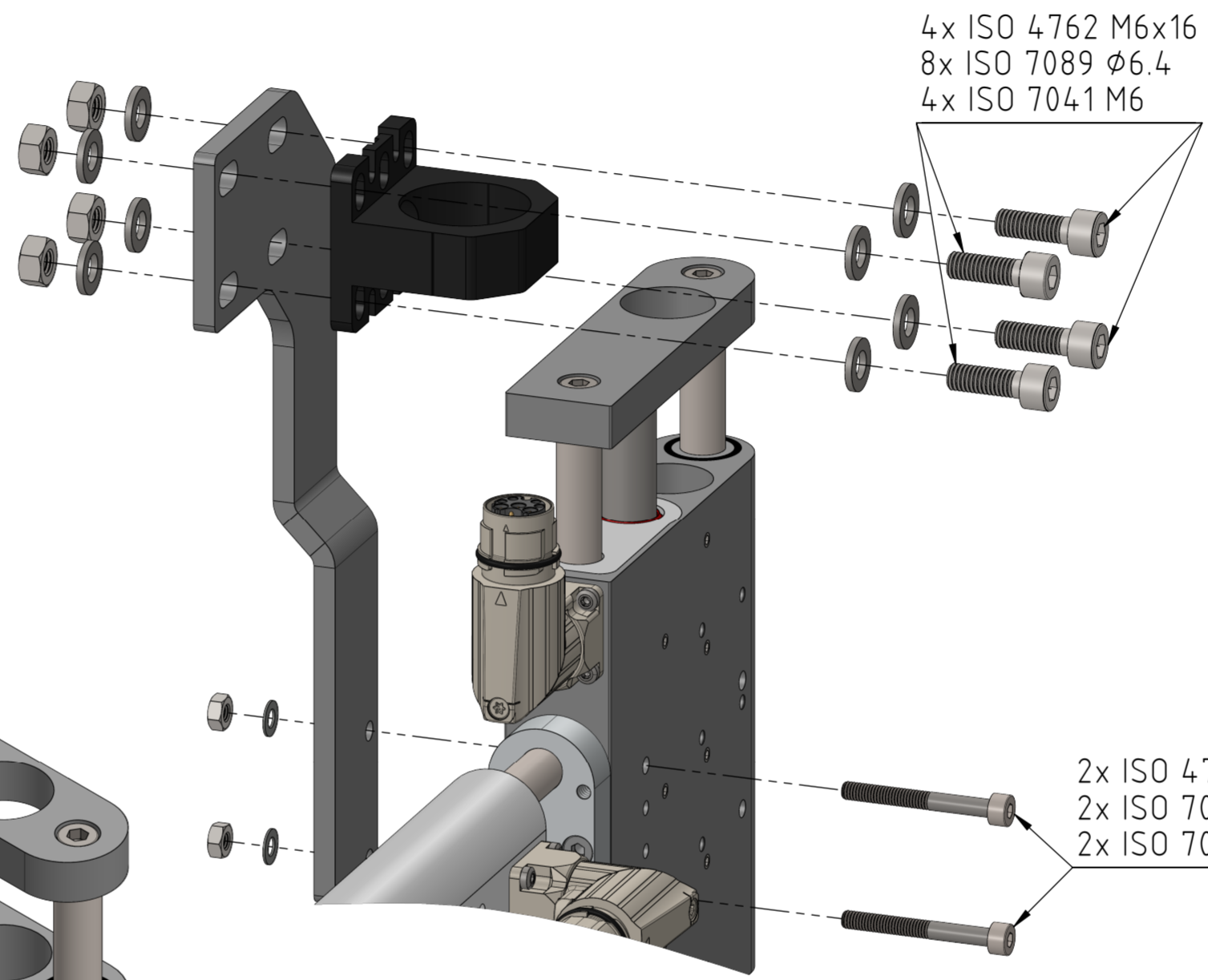
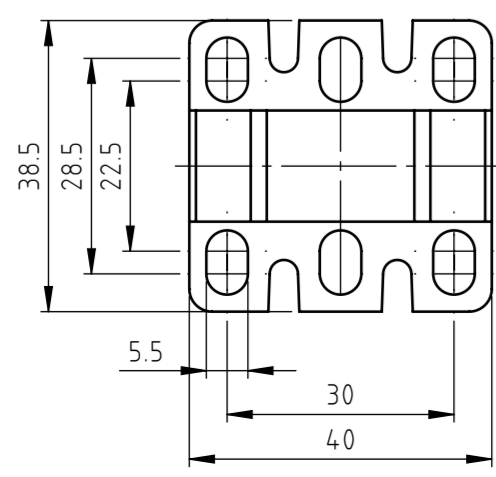
| Rev. | Change | Date | Author | Appr. |
|------|------------------|------------|--------|-------|
| A | Document created | 13.11.2024 | JB | FH |

| | | | |
|---|--|---------------------------|---|
| General tolerance DIN ISO 2768 - mK | Created by J.-E. Beekhuis | Status 13.12.2024 / jb | Material |
| LinMot® | 0380-0002_PP_DM01-80-MT08_DM03-60-MT04-MS11_PS01_TC01 | | <input type="checkbox"/> Safety Rel. Weight (g) <input type="checkbox"/> UL-Rel. |
| NTI AG LinMot & MagSpring Bodenaeckerstrasse 2 CH-8957 Spreitenbach | Title, additional title PP_DM01-80-MT08_ DM03-60-MT04-MS11_PS01_TC01 Pick&Place / DM01-23 & DM03-23 Art.No.: 0300-0002 | | Document type Assembly drawing Drawing number / Index 0380-0002A |
| Template type: SW2020 Version: V1-1 SW_A3_hori_Sheet_format_V1-1 | Scale 1:2 | | Sheet 2 / 3 A3 |

2m cable conduit
45mm minimum bending radius, static



4x Ø5.5 elongated holes



| | | | |
|------|------------------|------------|--------------|
| | | | |
| | | | |
| A | Document created | 13.11.2024 | JB FH |
| Rev. | Change | Date | Author Appr. |

| | | | |
|---|--|---|-------------------|
| General tolerance DIN ISO 2768 - mK | Created by J.-E. Beekhuis | Status 13.12.2024 / jb | Material |
| LinMot® | File name 0380-0002_PP_DM01-80-MT08_DM03-60-MT04-MS11_PS01_TC01 | <input type="checkbox"/> Safety Rel. Weight (g) <input type="checkbox"/> UL-Rel. | |
| NTI AG LinMot & MagSpring Bodenaeckerstrasse 2 CH-8957 Spreitenbach | Title, additional title PP_DM01-80-MT08_ DM03-60-MT04-MS11_PS01_TC01 Pick&Place / DM01-23 & DM03-23 | Document type Assembly drawing Drawing number / Index 0380-0002A | |
| Template type: SW2020 Version: V1-1 SW_A2_hori_Sheet_format_V1-1 | Art.No.: 0300-0002 | Scale 4:5 | Sheet 3 / 3 A2 |

The copyright in this document, which is personally entrusted to the recipient, remains with our company. Without our written permission, the document may not be copied nor reproduced nor communicated or made accessible to third parties without our written permission.