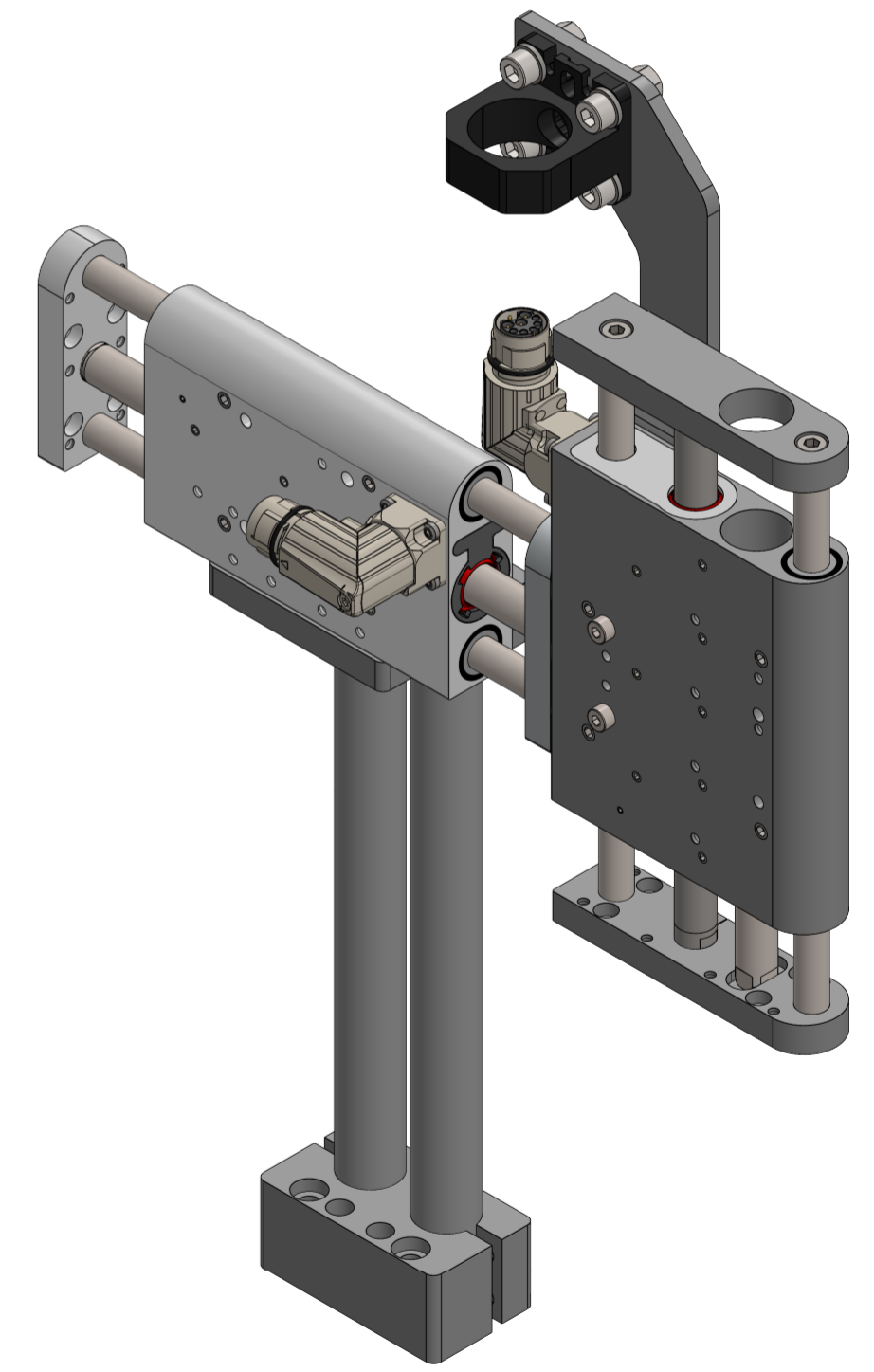
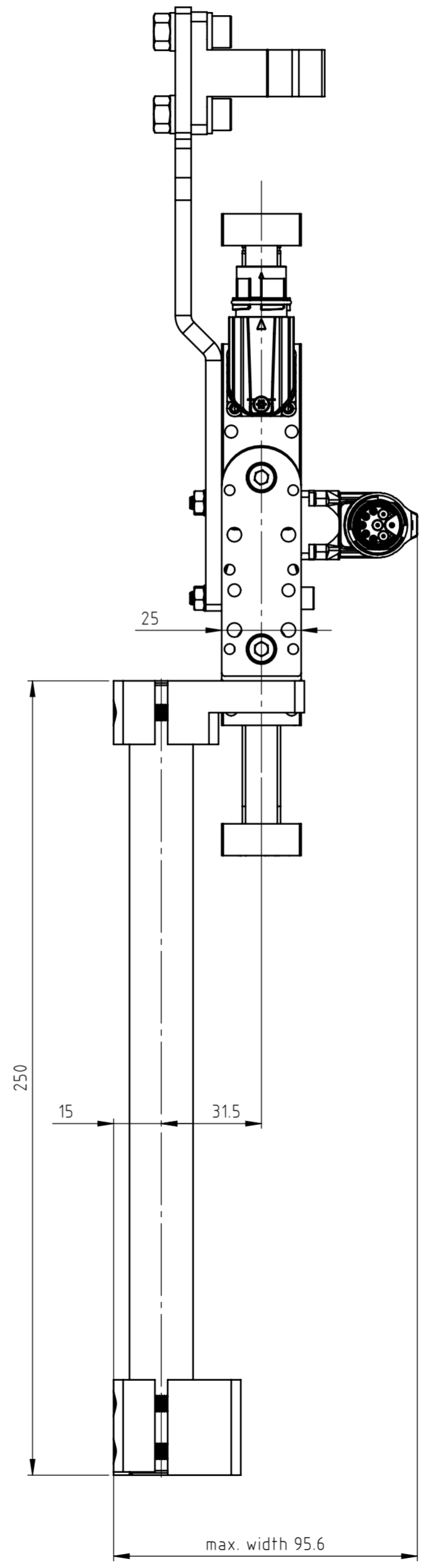
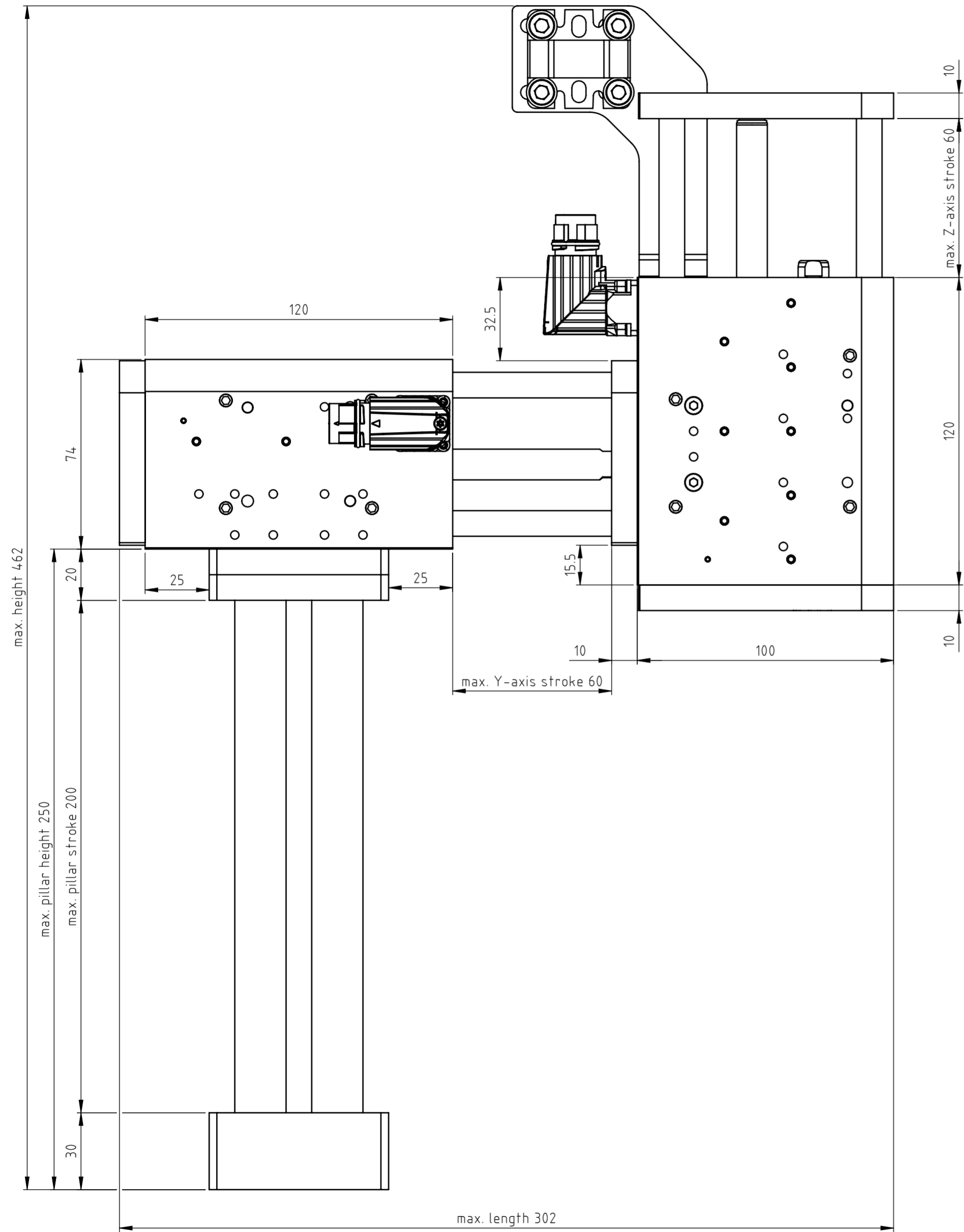


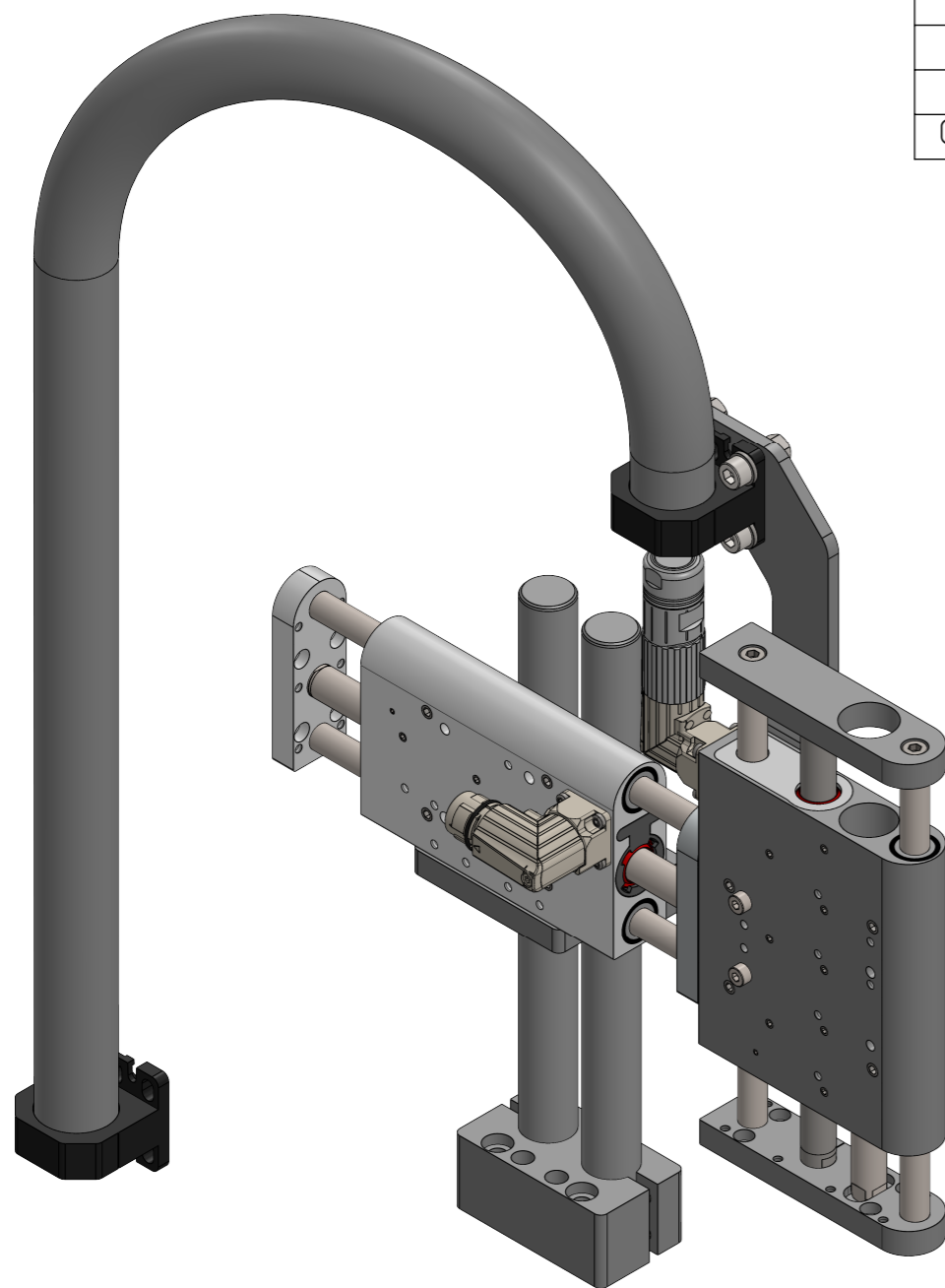
The copyright in this document, which is personally entrusted to the recipient, remains with our company. Without our written permission, the document may not be copied nor reproduced nor communicated or made accessible to third parties without our written permission.



A	Document created	13.11.2024	JB	FH	
Rev.	Change	Date	Author	Appr.	

General tolerance DIN ISO 2768 - mK	Created by J.-E. Beekhuis	Status 05.02.2025/jb	Material
LinMot®	File name 0380-0001_PP03_60-23x80F_60-23x80F-MS11_PS01_TC01	<input type="checkbox"/> Safety Rel.	Weight (g)
NTI AG LinMot & MagSpring Bodenaeckerstrasse 2 CH-8957 Spreitenbach	Title, additional title PP03_60-23x80F_60-23x80F-MS11_PS01_TC01	<input type="checkbox"/> UL-Rel.	Document type Assembly drawing
Template type: SW2020 Version: V1-1 SW_A2_hori_Sheet_format_V1-1	Pick&Place / DM01-23 & DM03-23	Art.No.: 0300-0001	Scale 2:3
			Drawing number / Index 0380-0001A
			Sheet 1 / 3
			A2

The copyright to this document, which is personally entrusted to the recipient, remains with our company. Without our written permission, the document may not be copied nor reproduced nor communicated or made accessible to third parties without our written permission.



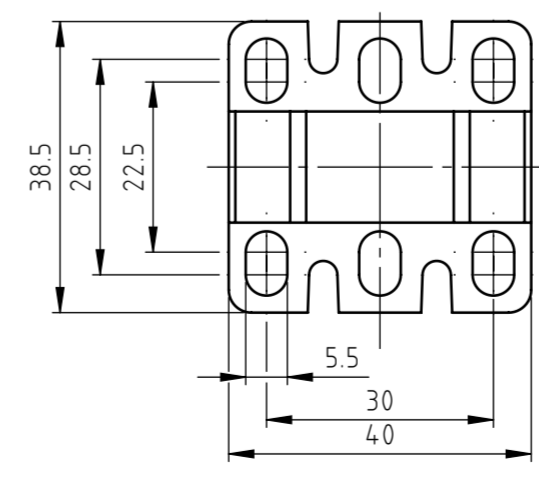
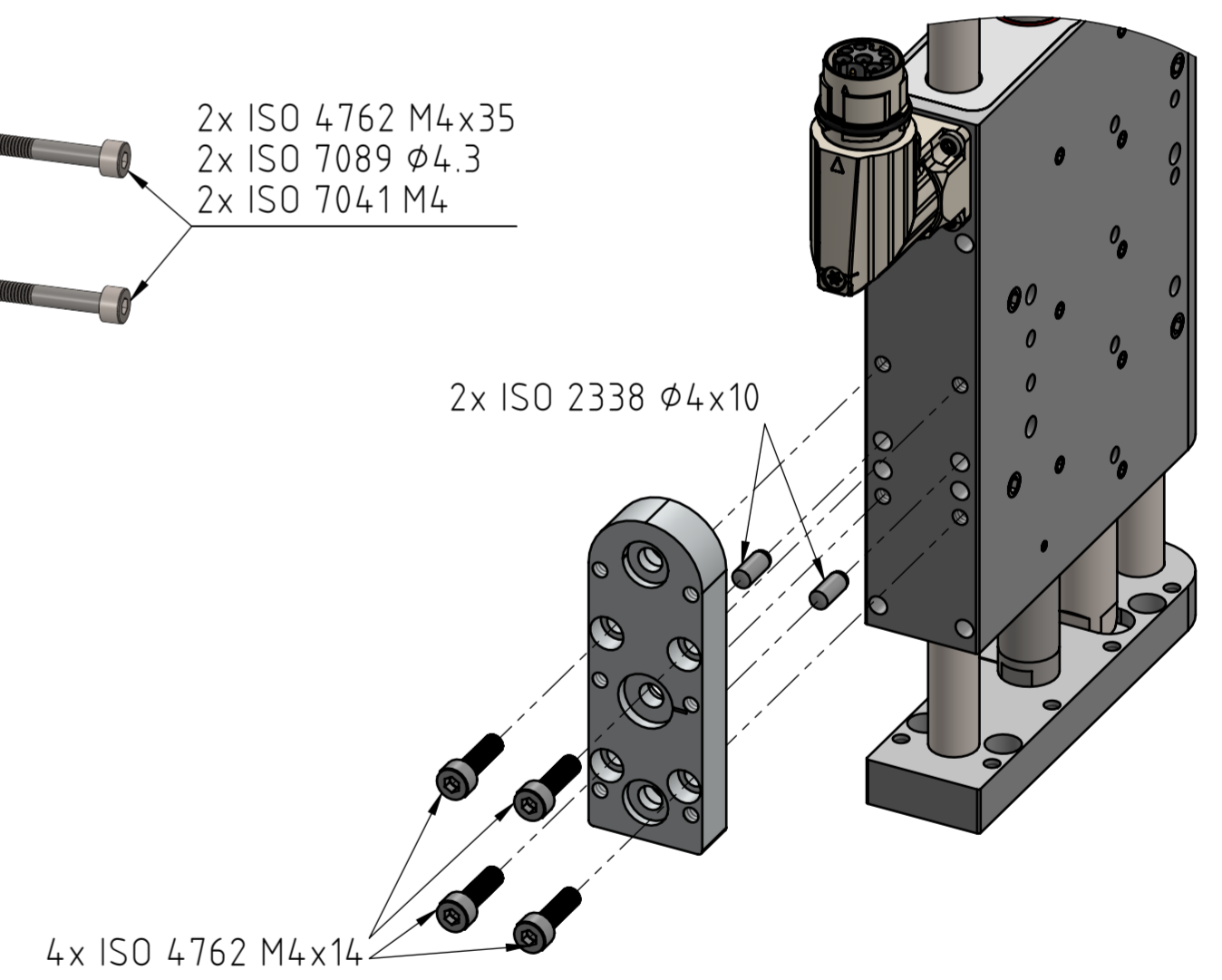
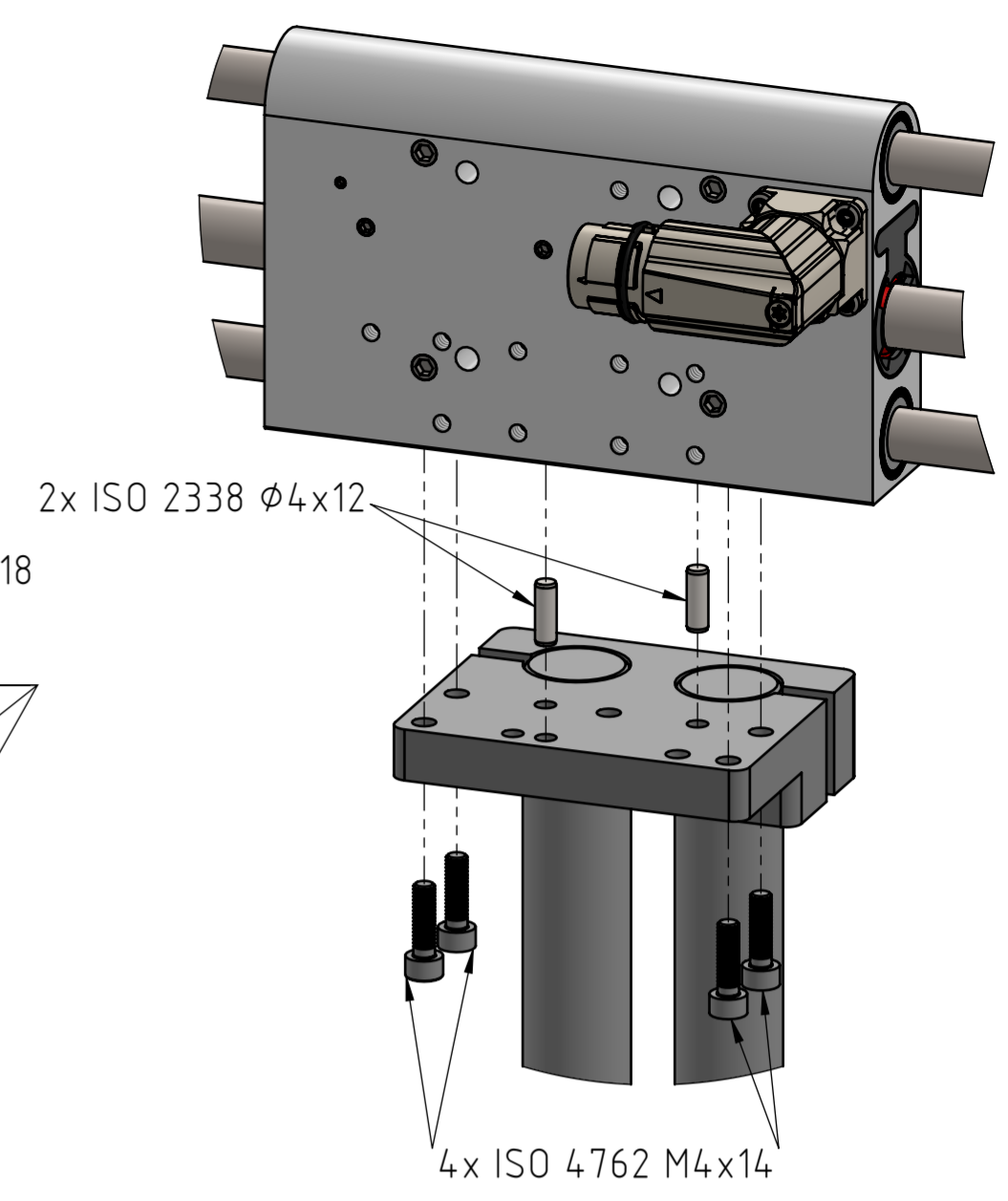
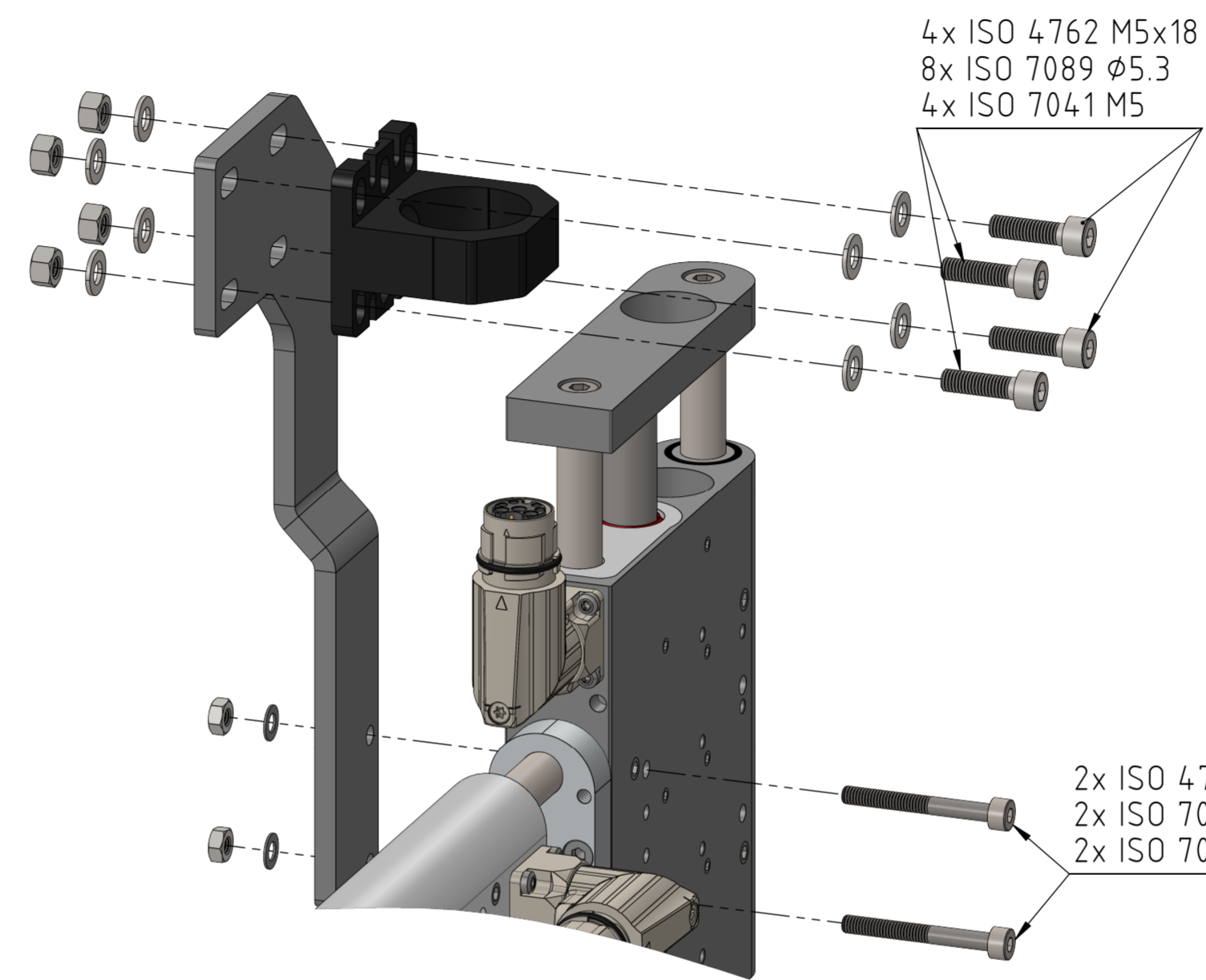
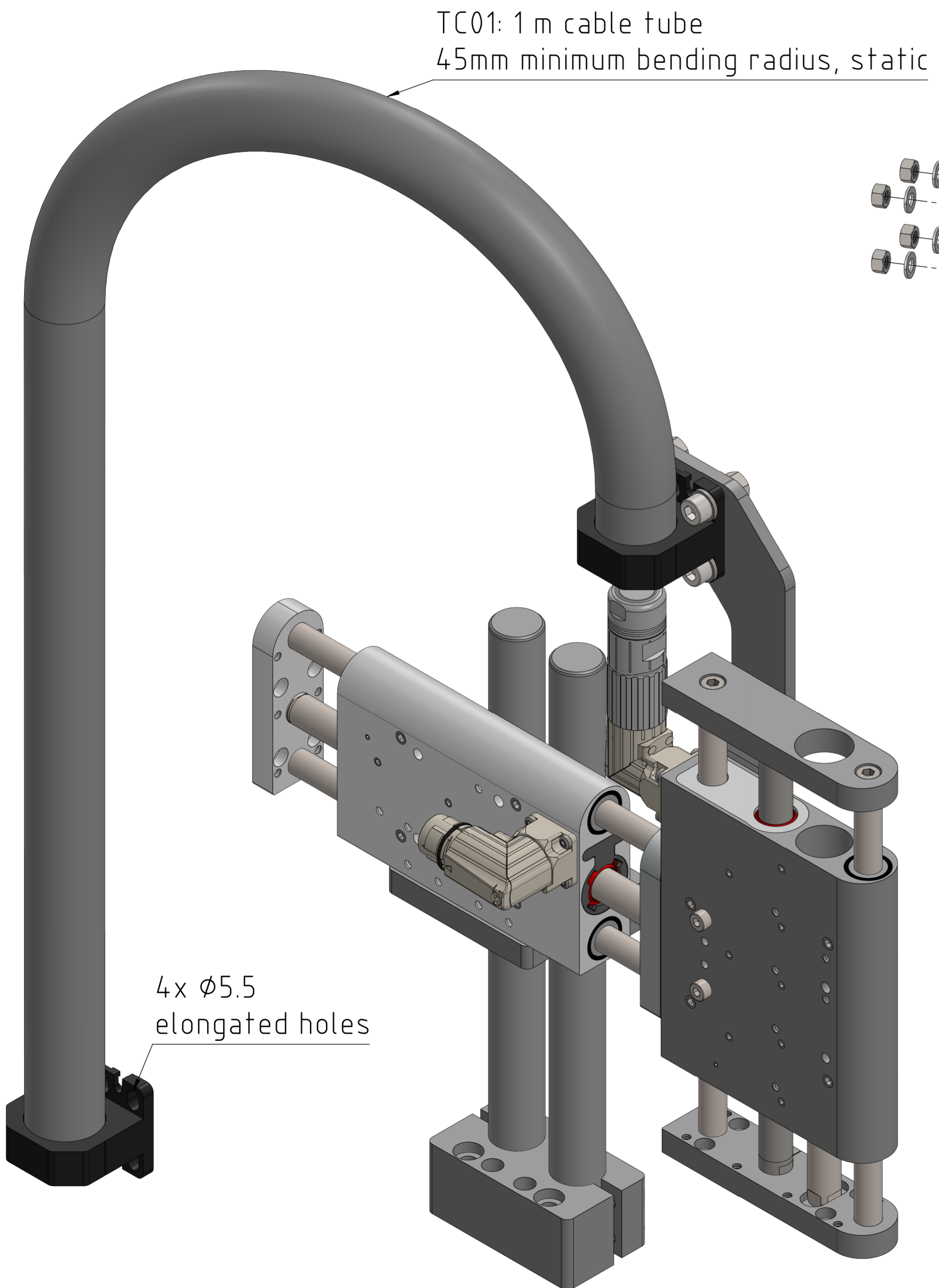
Stage type	PP03_60-23x80F_60-23x80F-MS11_PS01_TC01	
Motor type	Horizontal: 0150-4046 DM01-23x80F-HP-R-60	Vertical: 0150-6019 DM03-23x80F-XP-R-60_CS10_MS11
Stroke	60	60
Max. Force@48VDC [N]	67.1	73
Max. Force@72VDC [N]	67.1	73
Position resolution [mm]	0.002	0.002
Repeatability [mm]	±0.05	±0.05
Max. acceleration [m/s ²]	< 50	< 50
Max. Velocity@48VDC [m/s]	4.9	4.9
Max. Velocity@72VDC [m/s]	7.3	7.3
Deviation	see datasheet	see datasheet
Moving mass [kg]	0.460	0.580
Module mass [kg]	1.040	1.400
Pillar mass [kg]	1.530	
Cable weight [kg/km]	83.0	
Cable tube weight [kg/m]	0.084	
Max. payload	see datasheet	
Grease type - Motor	0150-1954 / 0150-1955 LU02	
Grease type - Bearings	0260-0061 SKF LGFP 2	
Grease type - MagSpring	0150-1954 / 0150-1955 LU02	

Accessories		
Stage type	PP03_60-23x80F_60-23x80F-MS11_PS01_TC01	
Motor type	Horizontal: 0150-4046 DM01-23x80F-HP-R-60	Vertical: 0150-6019 DM03-23x80F-XP-R-60_CS10_MS11
Safety	Not available	Not available
Clean room	Available: not chosen	Not available
External sensor	Not available	Not available
Cover	Not available	Not available
Cable guide	Chosen: TC01	Chosen: TC01
Pillar system	0150-6388 Z01-SB-20x2 0150-6386 Z01-SL-20x250 0150-6387 Z01-SA-20x2	Not available
Force sensor	Available: not chosen	Available: not chosen
Fan Kit	Not available	Not available

Rev.	Change	Date	Author	Appr.
A	Document created	13.11.2024	JB	FH

General tolerance DIN ISO 2768 - mK	Created by J.-E. Beekhuis	Status 05.02.2025/jb	Material
LinMot®	0380-0001_PP03_60-23x80F_60-23x80F-MS11_PS01_TC01		<input type="checkbox"/> Safety Rel. Weight (g) <input type="checkbox"/> UL-Rel.
NTI AG LinMot & MagSpring Bodenaeckerstrasse 2 CH-8957 Spreitenbach	Title, additional title PP03_60-23x80F_ 60-23x80F-MS11_PS01_TC01 Pick&Place / DM01-23 & DM03-23 Art.No.: 0300-0001		Document type Assembly drawing Drawing number / Index 0380-0001A
Template type: SW2020 Version: V1-1 SW_A3_hori_Sheet_format_V1-1	Scale 2:5		Sheet 2 / 3 A3

The copyright in this document, which is personally entrusted to the recipient, remains with our company. Without our written permission, the document may not be copied nor reproduced nor communicated or made accessible to third parties without our written permission.



A	Document created	13.11.2024	JB	FH
Rev.	Change	Date	Author	Appr.

General tolerance DIN ISO 2768 - mK	Created by J.-E. Beekhuis	Status 05.02.2025/jb	Material
LinMot®	File name 0380-0001_PP03_60-23x80F_60-23x80F-MS11_PS01_TC01		<input type="checkbox"/> Safety Rel. Weight (g) <input type="checkbox"/> UL-Rel.
NTI AG LinMot & MagSpring Bodenaeckerstrasse 2 CH-8957 Spreitenbach	Title, additional title PP03_60-23x80F_60-23x80F-MS11_PS01_TC01	Document type Assembly drawing	
Template type: SW2020 Version: V1-1 SW_A2_hori_Sheet_format_V1-1	Pick&Place / DM01-23 & DM03-23 Art.No.: 0300-0001	Drawing number / Index 0380-0001A	
	Scale 4:5		Sheet 3 / 3 A2