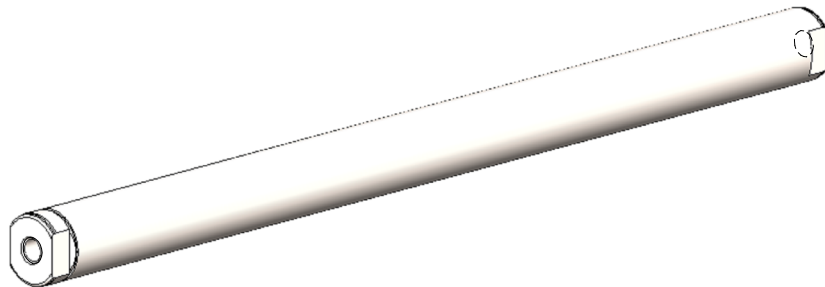


L <sub>(mm)</sub>	Stroke with PS01-48x240F-C	Stroke with PS01-48x360F-C	Stroke with PS01-54x120	Stroke with PS01-54x180	Stroke with PS01-54x240	Stroke with PS01-54x300	Standard	Art.-No.
	SS(ES) <sub>(mm)</sub>	SS(ES) <sub>(mm)</sub>	SS <sub>(mm)</sub>	SS <sub>(mm)</sub>	SS <sub>(mm)</sub>	SS <sub>(mm)</sub>		
350	30(180)	-	90	30	-	-	PL01-28x350!270-L	0150-1475
410	90(240)	-	150	90	30	-	PL01-28x410!330-L	0150-1476
500	180(380)	60(210)	240	180	120	60	PL01-28x500!420-L	0150-1480
620	300(450)	180(330)	360	300	240	180	PL01-28x620!540-L	0150-1481
710	390(540)	270(420)	450	390	330	270	PL01-28x710!630-L	0150-1482
800	480(630)	360(510)	540	480	420	360	PL01-28x800!720-L	0150-1483
920	600(750)	480(630)	660	600	540	480	PL01-28x920!840-L	0150-1484



Allgemeintoleranzen ISO 2768-m

## PL01-28x...-L Hollow Slider

Material:  
Ersatz für:  
Status: 13.04.2016/dm  
Änderungen

Gezeichnet: 13.04.2016 D.Marinkovic  
Dateiname: 0186-0416\_160413\_PL01-28-L

**NTI AG, LinMot**

Massstab  
3:2



Zeichnungsnummer  
**0186-0416**

Format  
**A3**