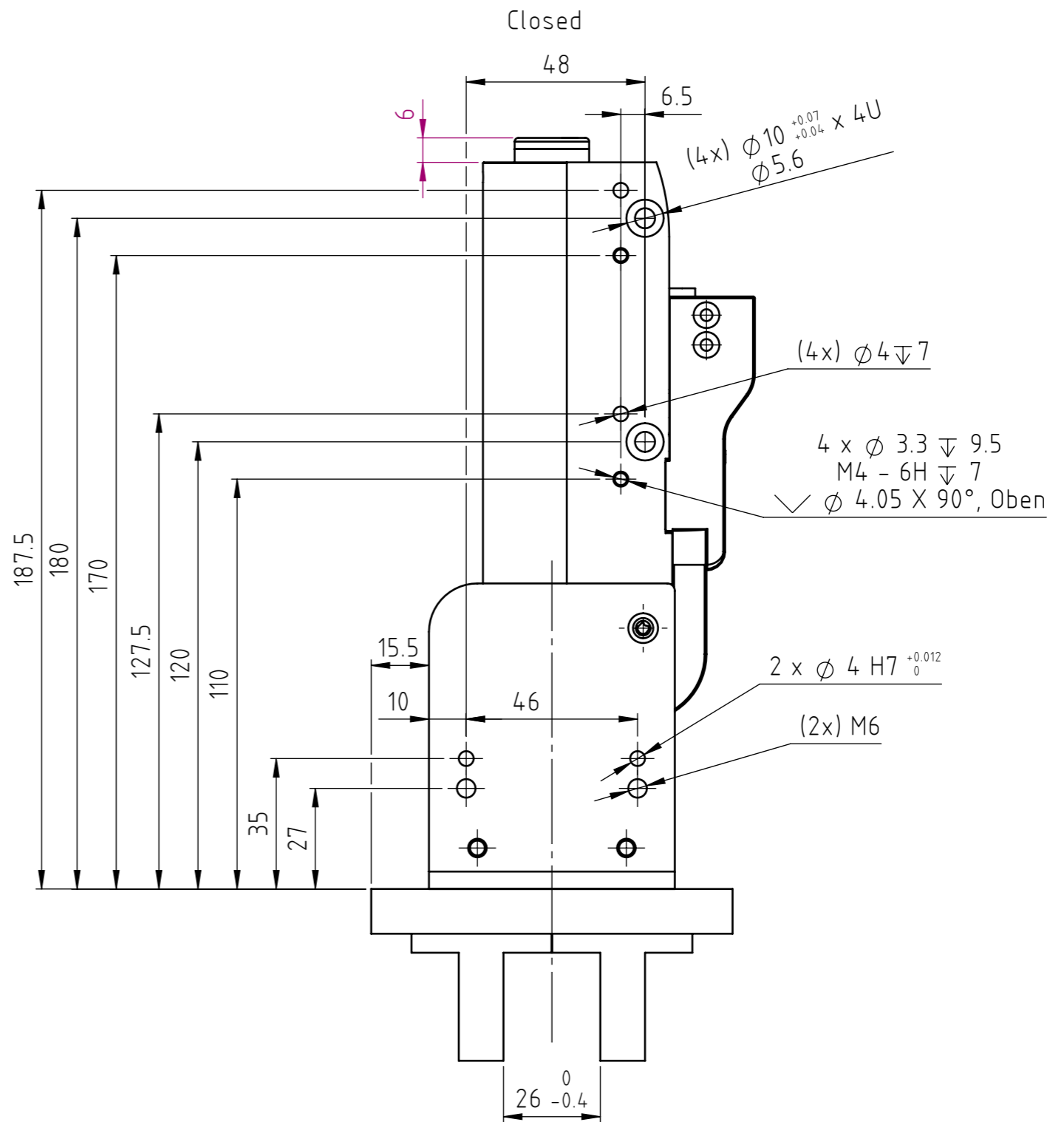
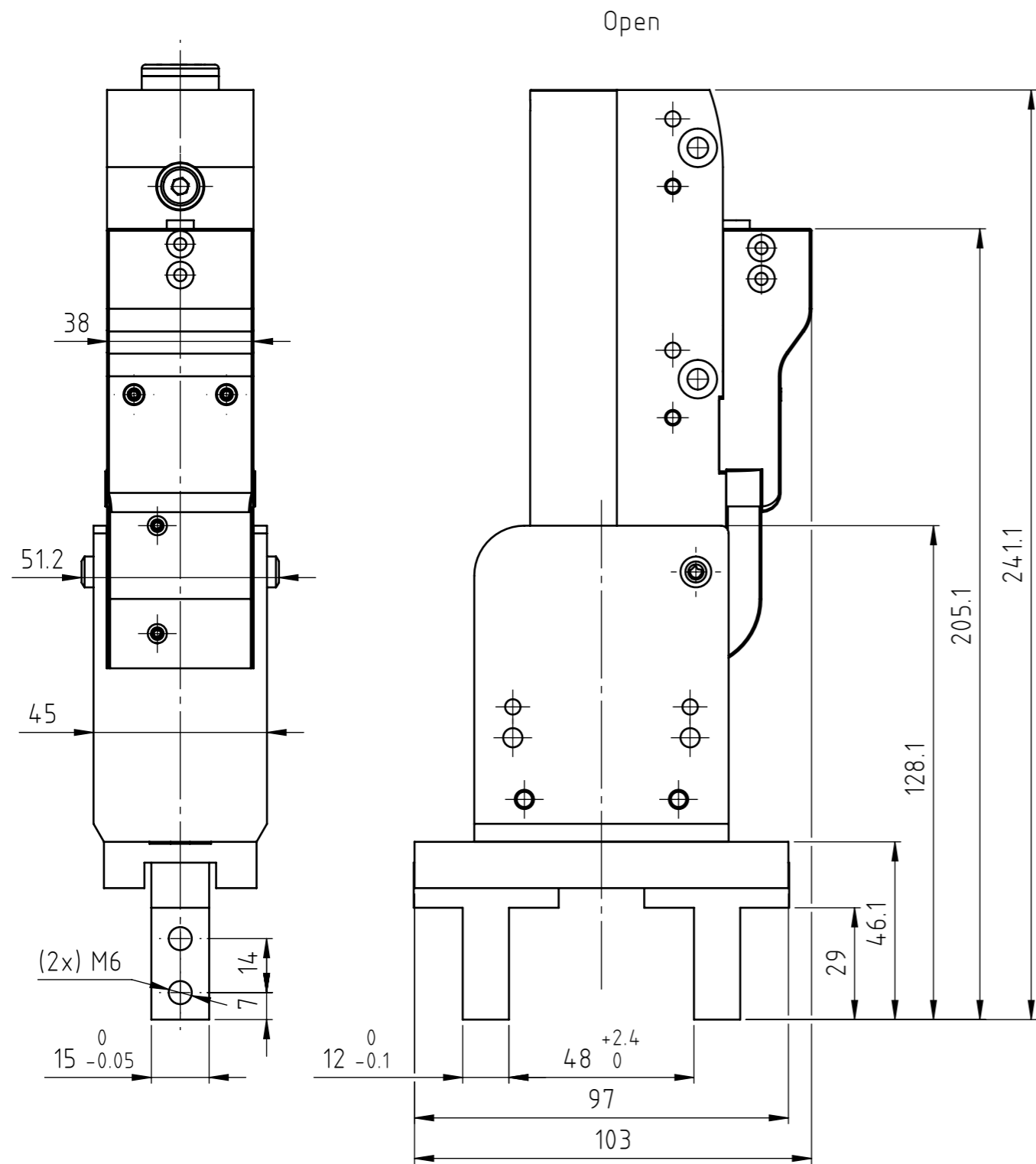


The copyright to this document, which is personally entrusted to the recipient, remains with our company. Without our written permission, the document may not be copied nor reproduced nor communicated or made accessible to third parties without our written permission.

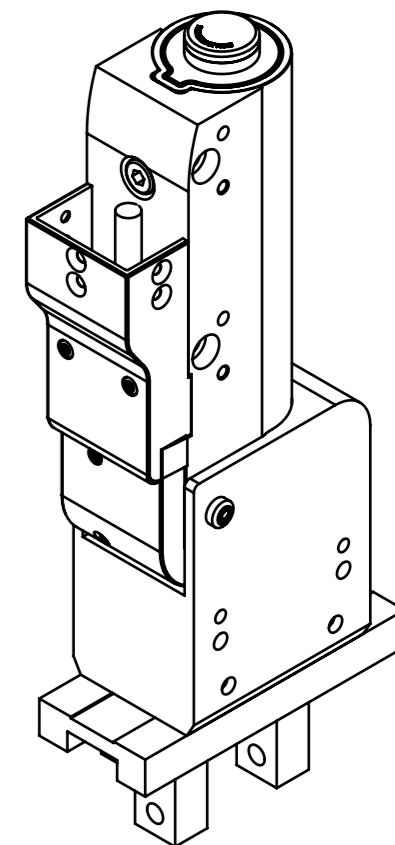
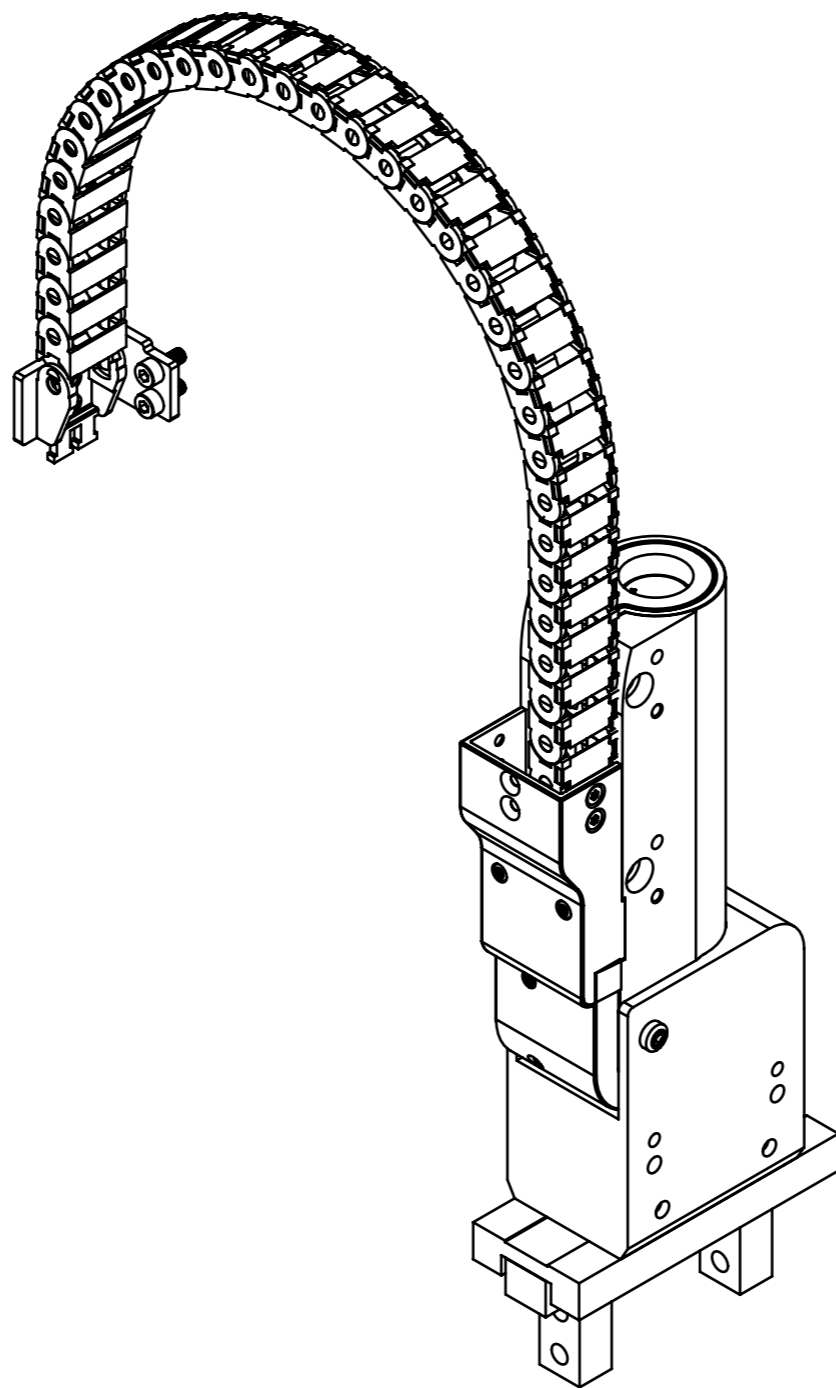
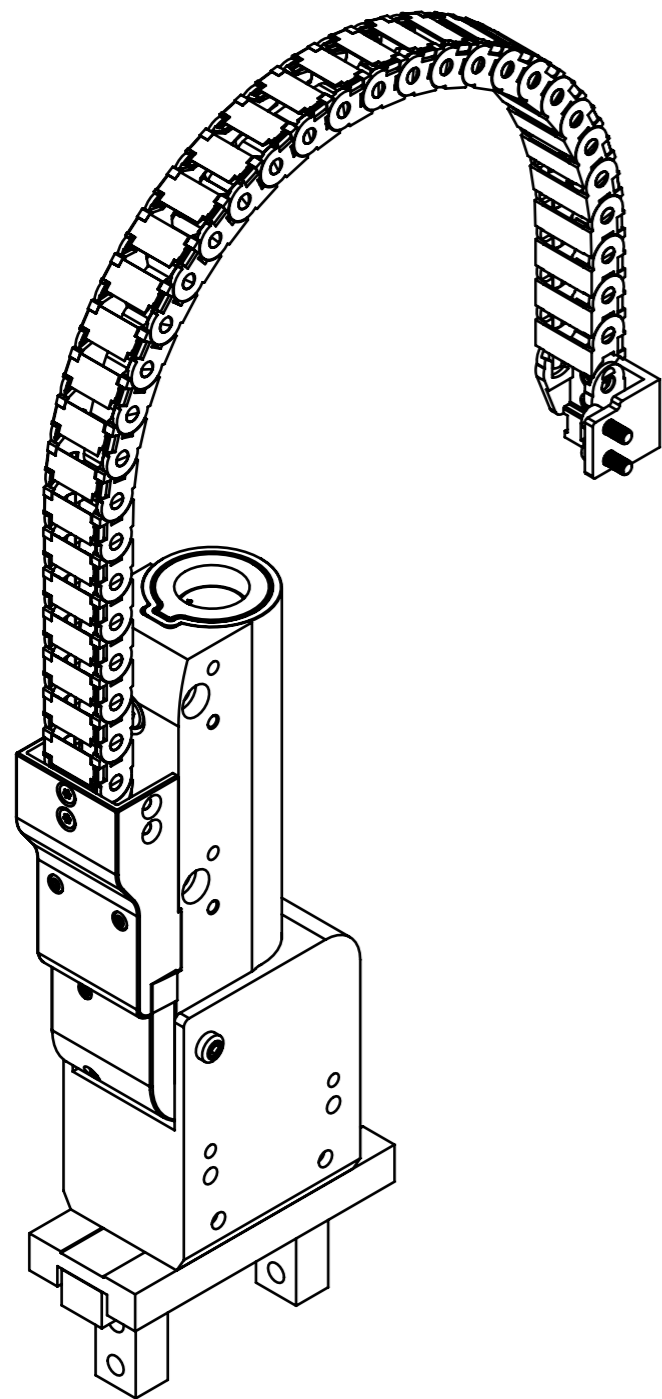


01	Document created	13.11.2024	la	dm
Rev.	Change	Date	Author	Appr.

Designation	Addition	Art.-No.
GM50-37Sx120-HP-N_48-22	Gripper module, stroke 22 mm	0150-6656
GM50-37Sx120-XP-N_48-22_MS03	Gripper module, stroke 22 mm with holding force	0150-6657

General tolerance DIN ISO 2768 - mK	Created by Lukas Allenspach	Status 16.12.2024 / jb	Material
LinMot®	0180-3906_GM50-37Sx120-XP-N_48-22_MSxx		<input type="checkbox"/> Safety Rel. Weight (g)
	Title, additional title GM50-37Sx120-XP-N_48-22_MSxx		<input type="checkbox"/> UL-Rel.
NTI AG LinMot & MagSpring Bodenaeckerstrasse 2 CH-8957 Spreitenbach	Gripper module, GM50-37, stroke 22mm		Document type Detail drawing
Template type: SW2020 Version: V1-1 SW_A3_hori_Sheet_format_V1-1	Art.No.: see table		Drawing number / Index 0180-3906-01
	Scale 2:3		Sheet 1 / 3 A3

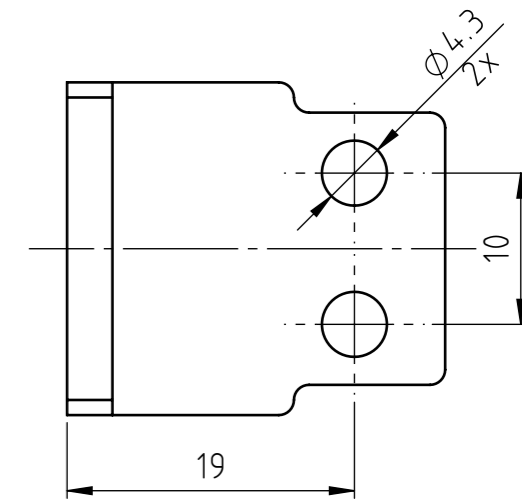
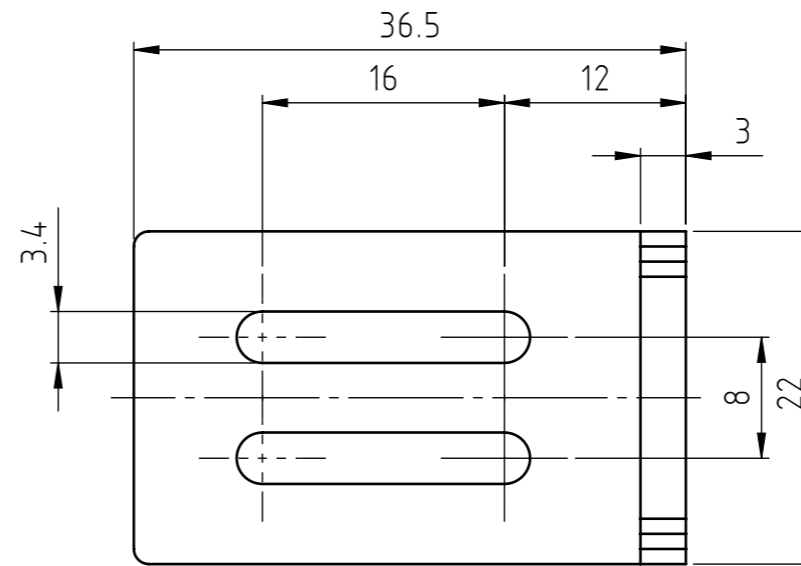
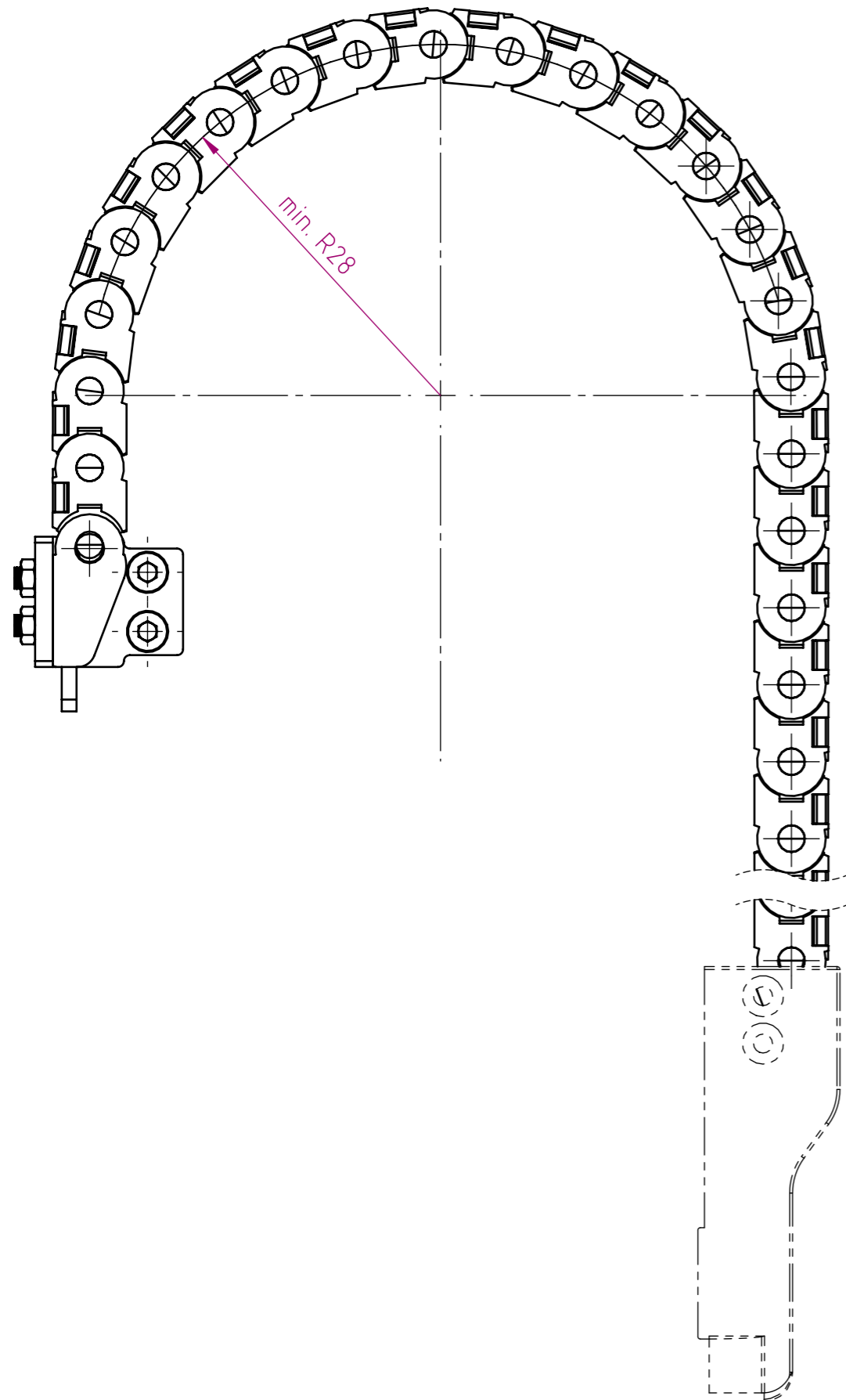
The copyright to this document, which is personally entrusted to the recipient, remains with our company. Without our written permission, the document may not be copied nor reproduced nor communicated or made accessible to third parties without our written permission.



01	Document created	13.11.2024	la	dm
Rev.	Change	Date	Author	Appr.

General tolerance DIN ISO 2768 - mK	Created by Lukas Allenspach	Status 16.12.2024 / jb	Material
LinMot® NTI AG LinMot & MagSpring Bodenaeckerstrasse 2 CH-8957 Spreitenbach	0180-3906_GM50-37Sx120-XP-N_48-22_MSxx Title, additional title GM50-37Sx120-XP-N_48-22_MSxx Gripper module, GM50-37, stroke 22mm		<input type="checkbox"/> Safety Rel. Weight (g) <input type="checkbox"/> UL-Rel.
	Template type: SW2020 Version: V1-1 SW_A3_hori_Sheet_format_V1-1		Document type Detail drawing Drawing number / Index 0180-3906-01
Art.No.: see table		Scale 1:2	<input type="checkbox"/> Sheet 2 / 3 A3

The copyright to this document, which is personally entrusted to the recipient, remains with our company. Without our written permission, the document may not be copied nor reproduced nor communicated or made accessible to third parties without our written permission.



01	Document created	13.11.2024	la	dm
Rev.	Change	Date	Author	Appr.

General tolerance DIN ISO 2768 - mK	Created by Lukas Allenspach	Status 16.12.2024 / jb	Material
LinMot® NTI AG LinMot & MagSpring Bodenaeckerstrasse 2 CH-8957 Spreitenbach	0180-3906_GM50-37Sx120-XP-N_48-22_MSxx Title, additional title		<input type="checkbox"/> Safety Rel. Weight (g) <input type="checkbox"/> UL-Rel.
	GM50-37Sx120-XP-N_48-22_MSxx Gripper module, GM50-37, stroke 22mm		Document type Detail drawing Drawing number / Index 0180-3906-01
Template type: SW2020 Version: V1-1 SW_A3_hori_Sheet_format_V1-1	Art.No.: see table		Scale 2:3
			Sheet 3 / 3
			A3